

Datasheet for ABIN390394
anti-ALS2 antibody (C-Term)

2 Images

[Go to Product page](#)

Overview

Quantity:	400 µL
Target:	ALS2
Binding Specificity:	AA 1248-1277, C-Term
Reactivity:	Human, Mouse
Host:	Rabbit
Clonality:	Polyclonal
Conjugate:	This ALS2 antibody is un-conjugated
Application:	Western Blotting (WB), Immunohistochemistry (Paraffin-embedded Sections) (IHC (p))

Product Details

Immunogen:	This ALS2 antibody is generated from rabbits immunized with a KLH conjugated synthetic peptide between 1248-1277 amino acids from the C-terminal region of human ALS2.
Clone:	RB18853
Isotype:	Ig Fraction
Predicted Reactivity:	Rat
Purification:	This antibody is prepared by Saturated Ammonium Sulfate (SAS) precipitation followed by dialysis against PBS.

Target Details

Target:	ALS2
---------	------

Target Details

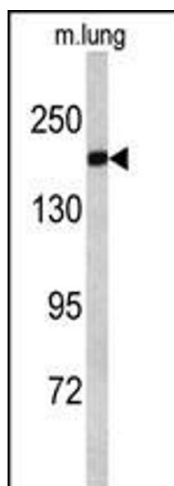
Alternative Name:	ALS2 (ALS2 Products)
Background:	ALS2 contains an ATS1/RCC1-like domain, a RhoGEF domain, and a vacuolar protein sorting 9 (VPS9) domain, all of which are guanine-nucleotide exchange factors that activate members of the Ras superfamily of GTPases. The protein functions as a guanine nucleotide exchange factor for the small GTPase RAB5. The protein localizes with RAB5 on early endosomal compartments, and functions as a modulator for endosomal dynamics. Mutations in its gene result in several forms of juvenile lateral sclerosis and infantile-onset ascending spastic paralysis.
Molecular Weight:	183634
Gene ID:	57679
NCBI Accession:	NP_001129217 , NP_065970
UniProt:	Q96Q42
Pathways:	Skeletal Muscle Fiber Development

Application Details

Application Notes:	WB: 1:1000. IHC-P: 1:50~100
Restrictions:	For Research Use only

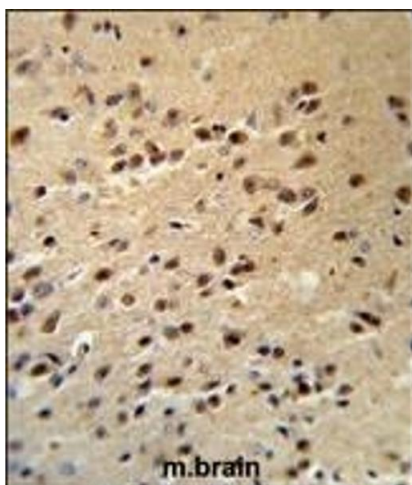
Handling

Format:	Liquid
Buffer:	Purified polyclonal antibody supplied in PBS with 0.09 % (W/V) sodium azide.
Preservative:	Sodium azide
Precaution of Use:	This product contains Sodium azide: a POISONOUS AND HAZARDOUS SUBSTANCE which should be handled by trained staff only.
Storage:	4 °C, -20 °C
Storage Comment:	Maintain refrigerated at 2-8 °C for up to 6 months. For long term storage store at -20 °C in small aliquots to prevent freeze-thaw cycles.
Expiry Date:	6 months



Western Blotting

Image 1. Western blot analysis of ALS2 antibody (C-term) (ABIN390394 and ABIN2840786) in mouse lung tissue lysates (35 µg/lane). ALS2 (arrow) was detected using the purified Pab.



Immunohistochemistry (Paraffin-embedded Sections)

Image 2. ALS2 Antibody (C-term) (R) IHC analysis in formalin fixed and paraffin embedded human brain tissue followed by peroxidase conjugation of the secondary antibody and DAB staining. This data demonstrates the use of the ALS2 Antibody (C-term) for immunohistochemistry. Clinical relevance has not been evaluated.