



[Go to Product page](#)

Datasheet for ABIN390400  
**anti-DPP8 antibody (C-Term)**

3 Images

Overview

Quantity:	400 µL
Target:	DPP8
Binding Specificity:	AA 846-876, C-Term
Reactivity:	Human
Host:	Rabbit
Clonality:	Polyclonal
Conjugate:	This DPP8 antibody is un-conjugated
Application:	Western Blotting (WB), Immunohistochemistry (Paraffin-embedded Sections) (IHC (p)), Flow Cytometry (FACS)

Product Details

Immunogen:	This DPP8 antibody is generated from rabbits immunized with a KLH conjugated synthetic peptide between 846-876 amino acids from the C-terminal region of human DPP8.
Clone:	RB19258
Isotype:	Ig Fraction
Predicted Reactivity:	M
Purification:	This antibody is prepared by Saturated Ammonium Sulfate (SAS) precipitation followed by dialysis against PBS.

Target Details

Target:	DPP8
---------	------

## Target Details

---

Alternative Name:	DPP8 ( <a href="#">DPP8 Products</a> )
Background:	DPP8 is a member of the peptidase S9B family, a small family of dipeptidyl peptidases that are able to cleave peptide substrates at a prolyl bond. The protein shares similarity with dipeptidyl peptidase IV in that it is ubiquitously expressed, and hydrolyzes the same substrates. These similarities suggest that, like dipeptidyl peptidase IV, this protein may play a role in T-cell activation and immune function.
Molecular Weight:	103358
Gene ID:	54878
NCBI Accession:	<a href="#">NP_060213</a> , <a href="#">NP_569118</a> , <a href="#">NP_932064</a> , <a href="#">NP_932065</a>
UniProt:	<a href="#">Q6V1X1</a>

## Application Details

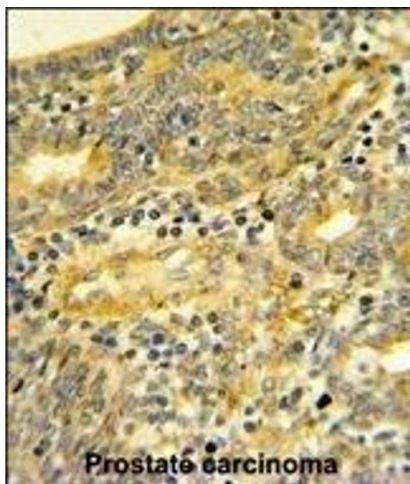
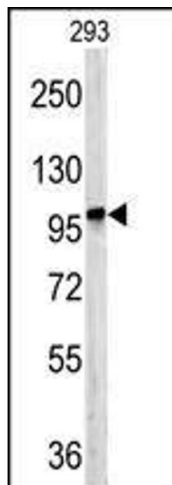
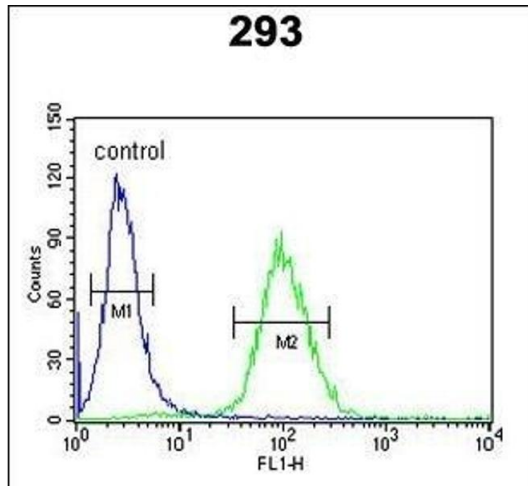
---

Application Notes:	WB: 1:1000. IHC-P: 1:50~100. FC: 1:10~50
Restrictions:	For Research Use only

## Handling

---

Format:	Liquid
Buffer:	Purified polyclonal antibody supplied in PBS with 0.09 % (W/V) sodium azide.
Preservative:	Sodium azide
Precaution of Use:	This product contains Sodium azide: a POISONOUS AND HAZARDOUS SUBSTANCE which should be handled by trained staff only.
Storage:	4 °C, -20 °C
Storage Comment:	Maintain refrigerated at 2-8 °C for up to 6 months. For long term storage store at -20 °C in small aliquots to prevent freeze-thaw cycles.
Expiry Date:	6 months



### Flow Cytometry

**Image 1.** D Antibody (C-term) (ABIN390400 and ABIN2840793) flow cytometric analysis of 293 cells (right histogram) compared to a negative control cell (left histogram). FITC-conjugated goat-anti-rabbit secondary antibodies were used for the analysis.

### Western Blotting

**Image 2.** Western blot analysis of D antibody (C-term) (ABIN390400 and ABIN2840793) in 293 cell line lysates (35 µg/lane). D (arrow) was detected using the purified Pab.

### Immunohistochemistry (Paraffin-embedded Sections)

**Image 3.** D Antibody (C-term) (ABIN390400 and ABIN2840793) IHC analysis in formalin fixed and paraffin embedded human Prostate carcinoma followed by peroxidase conjugation of the secondary antibody and DAB staining. This data demonstrates the use of the D Antibody (C-term) for immunohistochemistry. Clinical relevance has not been evaluated.