

Datasheet for ABIN390401

anti-Endothelin-1 Receptor antibody (AA 125-154)**3** Images[Go to Product page](#)

Overview

Quantity:	400 µL
Target:	Endothelin-1 Receptor (EDNRA)
Binding Specificity:	AA 125-154
Reactivity:	Human
Host:	Rabbit
Clonality:	Polyclonal
Conjugate:	This Endothelin-1 Receptor antibody is un-conjugated
Application:	Western Blotting (WB), Immunofluorescence (IF), Flow Cytometry (FACS)

Product Details

Immunogen:	This EDNRA antibody is generated from rabbits immunized with a KLH conjugated synthetic peptide between 125-154 amino acids from the Central region of human EDNRA.
Clone:	RB19282
Isotype:	Ig Fraction
Predicted Reactivity:	M, Rat
Purification:	This antibody is prepared by Saturated Ammonium Sulfate (SAS) precipitation followed by dialysis against PBS.

Target Details

Target:	Endothelin-1 Receptor (EDNRA)
---------	-------------------------------

Target Details

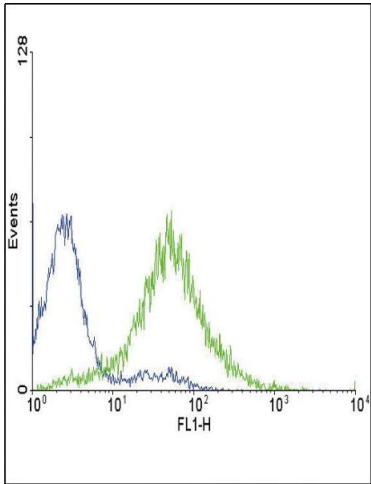
Alternative Name:	EDNRA (EDNRA Products)
Background:	EDNRA is a receptor for endothelin-1. Mediates its action by association with G proteins that activate a phosphatidylinositol-calcium second messenger system.
Molecular Weight:	48722
Gene ID:	1909
NCBI Accession:	NP_001159527 , NP_001243212 , NP_001948
UniProt:	P25101
Pathways:	cAMP Metabolic Process

Application Details

Application Notes:	IF: 1:10~50. WB: 1:1000. FC: 1:10~50
Restrictions:	For Research Use only

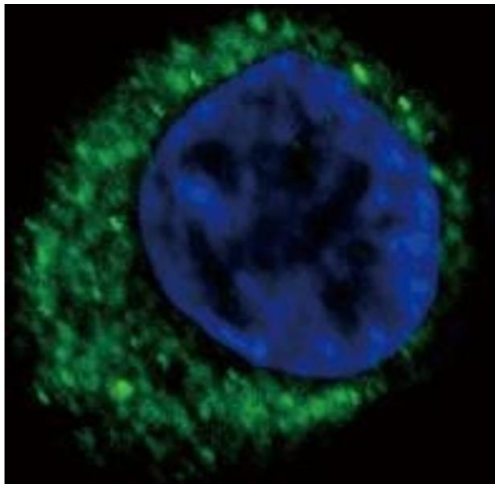
Handling

Format:	Liquid
Buffer:	Purified polyclonal antibody supplied in PBS with 0.09 % (W/V) sodium azide.
Preservative:	Sodium azide
Precaution of Use:	This product contains Sodium azide: a POISONOUS AND HAZARDOUS SUBSTANCE which should be handled by trained staff only.
Storage:	4 °C,-20 °C
Storage Comment:	Maintain refrigerated at 2-8 °C for up to 6 months. For long term storage store at -20 °C in small aliquots to prevent freeze-thaw cycles.
Expiry Date:	6 months



Flow Cytometry

Image 1. Flow cytometric analysis of CEM cells using EDNRA Antibody (Center) (green histogram) compared to a negative control cell (blue histogram). FITC-conjugated goat-anti-rabbit secondary antibodies were used for the analysis.



Immunofluorescence

Image 2. Confocal immunofluorescent analysis of EDNRA Antibody (Center) (ABIN390401 and ABIN2840794) with HepG2 cell followed by Alexa Fluor 488-conjugated goat anti-rabbit IgG (green). DAPI was used to stain the cell nuclear (blue).



Western Blotting

Image 3. Western blot analysis of EDNRA antibody (Center) (ABIN390401 and ABIN2840794) in CEM cell line lysates (35 µg/lane). EDNRA (arrow) was detected using the purified Pab.