



[Go to Product page](#)

Datasheet for ABIN390403

## anti-GADL1 antibody (C-Term)

### 1 Image

#### Overview

Quantity:	400 µL
Target:	GADL1
Binding Specificity:	AA 401-430, C-Term
Reactivity:	Human, Mouse
Host:	Rabbit
Clonality:	Polyclonal
Conjugate:	This GADL1 antibody is un-conjugated
Application:	Western Blotting (WB)

#### Product Details

Immunogen:	This GADL1 antibody is generated from rabbits immunized with a KLH conjugated synthetic peptide between 401-430 amino acids from the C-terminal region of human GADL1.
Clone:	RB19333
Isotype:	Ig Fraction
Purification:	This antibody is prepared by Saturated Ammonium Sulfate (SAS) precipitation followed by dialysis against PBS.

#### Target Details

Target:	GADL1
Alternative Name:	GADL1 ( <a href="#">GADL1 Products</a> )

## Target Details

---

Background: GADL1 belongs to the group II decarboxylase family.

Molecular Weight: 59246

Gene ID: 339896

NCBI Accession: [NP\\_997242](#)

UniProt: [Q6ZQY3](#)

## Application Details

---

Application Notes: WB: 1:1000

Restrictions: For Research Use only

## Handling

---

Format: Liquid

Buffer: Purified polyclonal antibody supplied in PBS with 0.09 % (W/V) sodium azide.

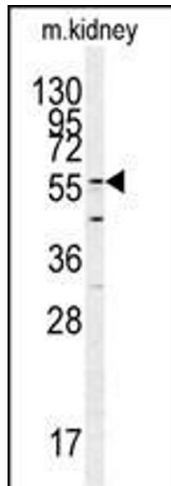
Preservative: Sodium azide

Precaution of Use: This product contains Sodium azide: a POISONOUS AND HAZARDOUS SUBSTANCE which should be handled by trained staff only.

Storage: 4 °C,-20 °C

Storage Comment: Maintain refrigerated at 2-8 °C for up to 6 months. For long term storage store at -20 °C in small aliquots to prevent freeze-thaw cycles.

Expiry Date: 6 months



### Western Blotting

**Image 1.** Western blot analysis of GADL1 antibody (C-term) (ABIN390403 and ABIN2840795) in mouse kidney tissue lysates (35  $\mu$ g/lane). GADL1 (arrow) was detected using the purified Pab.