

Datasheet for ABIN390405

anti-SUV420H2/KMT5C antibody (AA 187-214)**2** Images**1** Publication[Go to Product page](#)

Overview

Quantity:	200 µL
Target:	SUV420H2/KMT5C (SUV420H2)
Binding Specificity:	AA 187-214
Reactivity:	Mouse, Human
Host:	Rabbit
Clonality:	Polyclonal
Conjugate:	This SUV420H2/KMT5C antibody is un-conjugated
Application:	Western Blotting (WB), Flow Cytometry (FACS)

Product Details

Immunogen:	This SUV4-20H2 antibody is generated from rabbits immunized with a KLH conjugated synthetic peptide between 187-214 amino acids of human SUV4-20H2.
Clone:	RB19392
Isotype:	Ig Fraction
Predicted Reactivity:	Rat
Purification:	This antibody is prepared by Saturated Ammonium Sulfate (SAS) precipitation followed by dialysis against PBS.

Target Details

Target:	SUV420H2/KMT5C (SUV420H2)
---------	---------------------------

Target Details

Alternative Name:	SUV4-20H2 (SUV420H2 Products)
Background:	<p>SUV420H2 is a histone methyltransferase that specifically trimethylates 'Lys-20' of histone H4. H4 'Lys-20' trimethylation represents a specific tag for epigenetic transcriptional repression.</p> <p>The protein mainly functions in pericentric heterochromatin regions, thereby playing a central role in the establishment of constitutive heterochromatin in these regions. SUV420H1 is targeted to histone H3 via its interaction with RB1 family proteins (RB1, RBL1 and RBL2).</p>
Molecular Weight:	52113
Gene ID:	84787
NCBI Accession:	NP_116090
UniProt:	Q86Y97

Application Details

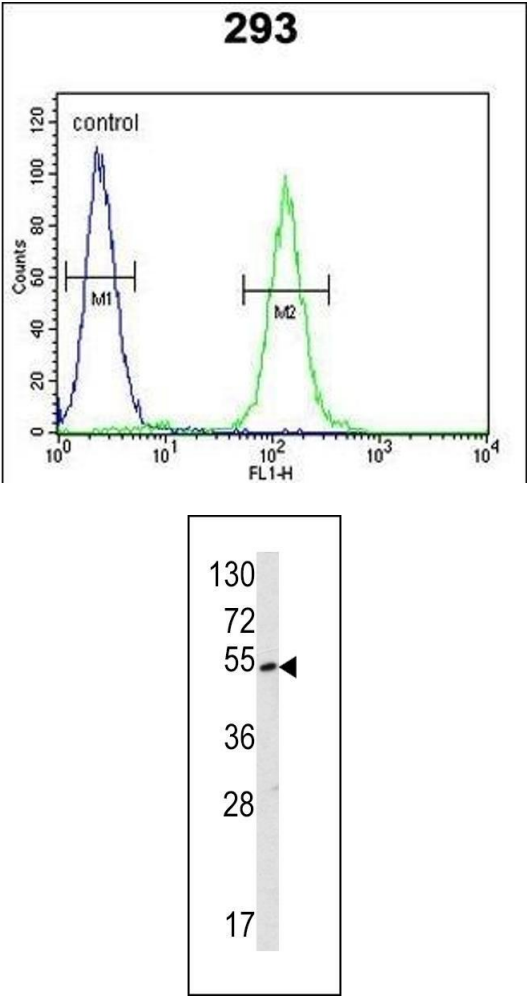
Application Notes:	WB: 1:1000. FC: 1:10~50
Restrictions:	For Research Use only

Handling

Format:	Liquid
Buffer:	Purified polyclonal antibody supplied in PBS with 0.09 % (W/V) sodium azide.
Preservative:	Sodium azide
Precaution of Use:	This product contains Sodium azide: a POISONOUS AND HAZARDOUS SUBSTANCE which should be handled by trained staff only.
Storage:	4 °C, -20 °C
Storage Comment:	Maintain refrigerated at 2-8 °C for up to 6 months. For long term storage store at -20 °C in small aliquots to prevent freeze-thaw cycles.
Expiry Date:	6 months

Publications

Product cited in:	Lei, Chen, Huang, Wu, Lin, Lai: "Proteomic analysis of the effect of extracellular calcium ions on human mesenchymal stem cells: Implications for bone tissue engineering." in: Chemico-biological interactions , Vol. 233, pp. 139-46, (2015) (PubMed).
-------------------	---



Flow Cytometry

Image 1. SUV4-20H2 Antibody (Center) (ABIN390405 and ABIN2840796) flow cytometric analysis of 293 cells (right histogram) compared to a negative control cell (left histogram).FITC-conjugated goat-anti-rabbit secondary antibodies were used for the analysis.

Western Blotting

Image 2. Western blot analysis of SUV4-20H2 antibody (Center) (ABIN390405 and ABIN2840796) in mouse stomach tissue lysates (35 µg/lane). SUV4-20H2 (arrow) was detected using the purified Pab.