

Datasheet for ABIN390407  
**anti-CEA antibody (AA 400-429)**[Go to Product page](#)

## 3 Images

## Overview

Quantity:	400 µL
Target:	CEA
Binding Specificity:	AA 400-429
Reactivity:	Human
Host:	Rabbit
Clonality:	Polyclonal
Conjugate:	This CEA antibody is un-conjugated
Application:	Western Blotting (WB), Flow Cytometry (FACS), Immunohistochemistry (Paraffin-embedded Sections) (IHC (p))

## Product Details

Immunogen:	This CEA antibody is generated from rabbits immunized with a KLH conjugated synthetic peptide between 400-429 amino acids from the Central region of human CEA.
Clone:	RB19418
Isotype:	Ig Fraction
Purification:	This antibody is purified through a protein A column, followed by peptide affinity purification.

## Target Details

Target:	CEA
Alternative Name:	CEA ( <a href="#">CEA Products</a> )

## Target Details

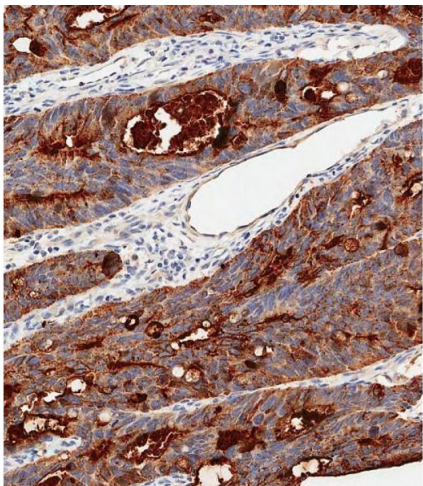
Background:	CEA is a cell surface glycoprotein that plays a role in cell adhesion and in intracellular signaling. It is a receptor for E.coli Dr adhesins.
Molecular Weight:	76795
Gene ID:	1048
NCBI Accession:	<a href="#">NP_004354</a>
UniProt:	<a href="#">P06731</a>

## Application Details

Application Notes:	WB: 1:1000. IHC-P-Leica: 1:500. FC: 1:10~50
Restrictions:	For Research Use only

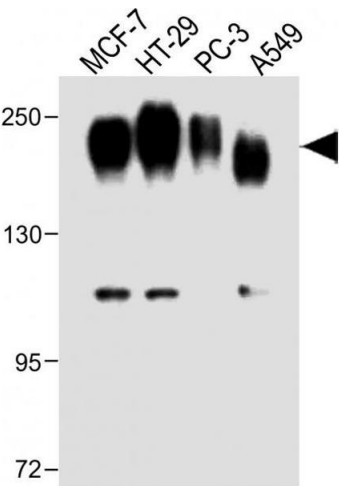
## Handling

Format:	Liquid
Buffer:	Purified polyclonal antibody supplied in PBS with 0.09 % (W/V) sodium azide.
Preservative:	Sodium azide
Precaution of Use:	This product contains Sodium azide: a POISONOUS AND HAZARDOUS SUBSTANCE which should be handled by trained staff only.
Storage:	4 °C,-20 °C
Storage Comment:	Maintain refrigerated at 2-8 °C for up to 6 months. For long term storage store at -20 °C in small aliquots to prevent freeze-thaw cycles.
Expiry Date:	6 months



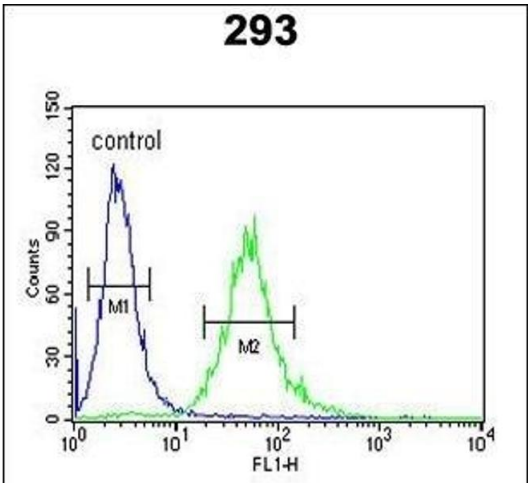
Immunohistochemistry (Paraffin-embedded Sections)

**Image 1.** Immunohistochemical analysis of paraffin-embedded Human colon carcinoma tissue using C performed on the Leica® BOND RXm. Tissue was fixed with formaldehyde at room temperature, antigen retrieval was by heat mediation with a EDTA buffer ( pH 9. 0). Samples were incubated with primary Antibody (1:500) for 1 hours at room temperature. A undiluted biotinylated CRF Anti-Polyvalent HRP Polymer antibody was used as the secondary antibody.



Western Blotting

**Image 2.** All lanes : Anti-CEA Antibody (Center) at 1:1000 dilution Lane 1: MCF-7 whole cell lysate Lane 2: HT-29 whole cell lysate Lane 3: PC-3 whole cell lysate Lane 4: A549 whole cell lysate Lysates/proteins at 20 µg per lane. Secondary Goat Anti-Rabbit IgG, (H+L), Peroxidase conjugated at 1/10000 dilution. Predicted band size : 77 kDa Blocking/Dilution buffer: 5 % NFDM/TBST.



Flow Cytometry

**Image 3.** CEA Antibody (Center) (ABIN390407 and ABIN2840797) flow cytometric analysis of 293 cells (right histogram) compared to a negative control cell (left histogram).FITC-conjugated goat-anti-rabbit secondary antibodies were used for the analysis.