

Datasheet for ABIN390418
anti-ARPC1A antibody (AA 157-184)[Go to Product page](#)

3 Images

Overview

Quantity:	400 µL
Target:	ARPC1A
Binding Specificity:	AA 157-184
Reactivity:	Human
Host:	Rabbit
Clonality:	Polyclonal
Conjugate:	This ARPC1A antibody is un-conjugated
Application:	Western Blotting (WB), Immunohistochemistry (Paraffin-embedded Sections) (IHC (p)), Flow Cytometry (FACS)

Product Details

Immunogen:	This ARPC1A antibody is generated from rabbits immunized with a KLH conjugated synthetic peptide between 157-184 amino acids from the Central region of human ARPC1A.
Clone:	RB19554
Isotype:	Ig Fraction
Predicted Reactivity:	X, B, M, Rat
Purification:	This antibody is prepared by Saturated Ammonium Sulfate (SAS) precipitation followed by dialysis against PBS.

Target Details

Target:	ARPC1A
---------	--------

Target Details

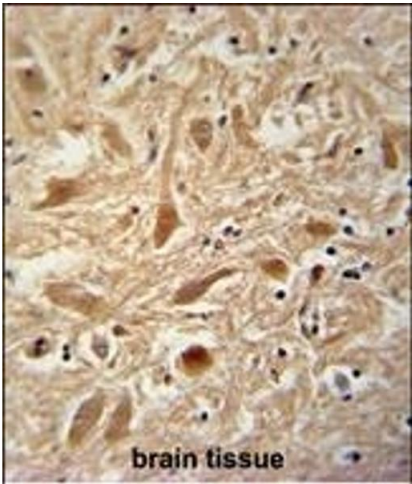
Alternative Name:	ARPC1A (ARPC1A Products)
Background:	ARPC1A is one of seven subunits of the human Arp2/3 protein complex. This subunit is a member of the SOP2 family of proteins and is most similar to the protein ARPC1B. The similarity between these two proteins suggests that they both may function as p41 subunit of the human Arp2/3 complex that has been implicated in the control of actin polymerization in cells. It is possible that the p41 subunit is involved in assembling and maintaining the structure of the Arp2/3 complex. Multiple versions of the p41 subunit may adapt the functions of the complex to different cell types or developmental stages.
Molecular Weight:	41569
Gene ID:	10552
NCBI Accession:	NP_006400
UniProt:	Q92747
Pathways:	Regulation of Actin Filament Polymerization

Application Details

Application Notes:	WB: 1:1000. IHC-P: 1:50~100. FC: 1:10~50
Restrictions:	For Research Use only

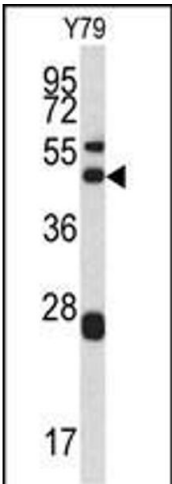
Handling

Format:	Liquid
Buffer:	Purified polyclonal antibody supplied in PBS with 0.09 % (W/V) sodium azide.
Preservative:	Sodium azide
Precaution of Use:	This product contains Sodium azide: a POISONOUS AND HAZARDOUS SUBSTANCE which should be handled by trained staff only.
Storage:	4 °C, -20 °C
Storage Comment:	Maintain refrigerated at 2-8 °C for up to 6 months. For long term storage store at -20 °C in small aliquots to prevent freeze-thaw cycles.
Expiry Date:	6 months



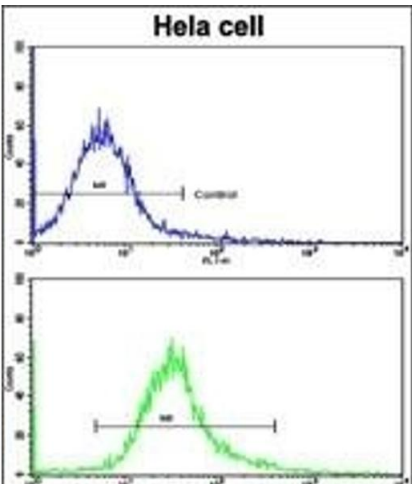
Immunohistochemistry (Paraffin-embedded Sections)

Image 1. ARPC1A Antibody (Center) (ABIN390418 and ABIN2840806) immunohistochemistry analysis in formalin fixed and paraffin embedded human brain tissue followed by peroxidase conjugation of the secondary antibody and DAB staining. This data demonstrates the use of the ARPC1A Antibody (Center) for immunohistochemistry. Clinical relevance has not been evaluated.



Western Blotting

Image 2. Western blot analysis of ARPC1A antibody (Center) (ABIN390418 and ABIN2840806) in Y79 cell line lysates (35 µg/lane). ARPC1A (arrow) was detected using the purified Pab.



Flow Cytometry

Image 3. Flow cytometric analysis of hela cells using ARPC1A Antibody (Center)(bottom histogram) compared to a negative control cell (top histogram). FITC-conjugated goat-anti-rabbit secondary antibodies were used for the analysis.