

Datasheet for ABIN390420
anti-CLNS1A antibody (AA 148-176)[Go to Product page](#)

3 Images

Overview

Quantity:	400 µL
Target:	CLNS1A
Binding Specificity:	AA 148-176
Reactivity:	Human
Host:	Rabbit
Clonality:	Polyclonal
Conjugate:	This CLNS1A antibody is un-conjugated
Application:	Western Blotting (WB), Flow Cytometry (FACS), Immunohistochemistry (Paraffin-embedded Sections) (IHC (p))

Product Details

Immunogen:	This CLNS1A antibody is generated from rabbits immunized with a KLH conjugated synthetic peptide between 148-176 amino acids from the Central region of human CLNS1A.
Clone:	RB19566
Isotype:	Ig Fraction
Predicted Reactivity:	M, Rb, Rat
Purification:	This antibody is prepared by Saturated Ammonium Sulfate (SAS) precipitation followed by dialysis against PBS.

Target Details

Target:	CLNS1A
---------	--------

Target Details

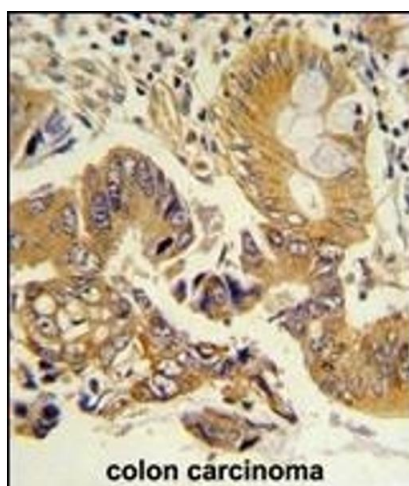
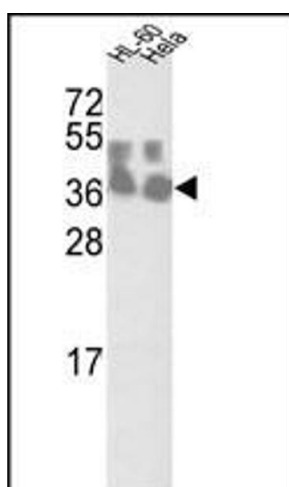
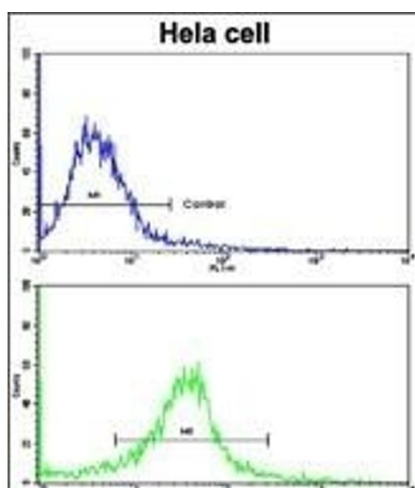
Alternative Name:	CLNS1A (CLNS1A Products)
Background:	CLNS1A is a protein that functions in multiple regulatory pathways. The protein complexes with numerous cytosolic proteins and performs diverse functions including regulation of small nuclear ribonucleoprotein biosynthesis, platelet activation and cytoskeletal organization. The protein is also found associated with the plasma membrane where it functions as a chloride current regulator.
Molecular Weight:	26215
Gene ID:	1207
NCBI Accession:	NP_001284
UniProt:	P54105
Pathways:	Ribonucleoprotein Complex Subunit Organization

Application Details

Application Notes:	WB: 1:1000. IHC-P: 1:50~100. FC: 1:10~50
Restrictions:	For Research Use only

Handling

Format:	Liquid
Buffer:	Purified polyclonal antibody supplied in PBS with 0.09 % (W/V) sodium azide.
Preservative:	Sodium azide
Precaution of Use:	This product contains Sodium azide: a POISONOUS AND HAZARDOUS SUBSTANCE which should be handled by trained staff only.
Storage:	4 °C,-20 °C
Storage Comment:	Maintain refrigerated at 2-8 °C for up to 6 months. For long term storage store at -20 °C in small aliquots to prevent freeze-thaw cycles.
Expiry Date:	6 months



Flow Cytometry

Image 1. Flow cytometric analysis of heLa cells using CLNS1A Antibody (Center)(bottom histogram) compared to a negative control cell (top histogram). FITC-conjugated goat-anti-rabbit secondary antibodies were used for the analysis.

Western Blotting

Image 2. Western blot analysis of CLNS1A Antibody (Center) (ABIN390420 and ABIN2840808) in HL-60 and HeLa cell line lysates (35 µg/lane). CLNS1A (arrow) was detected using the purified Pab.

Immunohistochemistry (Paraffin-embedded Sections)

Image 3. Formalin-fixed and paraffin-embedded human colon carcinoma reacted with CLNS1A Antibody (Center), which was peroxidase-conjugated to the secondary antibody, followed by DAB staining. This data demonstrates the use of this antibody for immunohistochemistry, clinical relevance has not been evaluated.