

Datasheet for ABIN390427

anti-Emerin antibody (C-Term)**2** Images[Go to Product page](#)

Overview

Quantity:	400 µL
Target:	Emerin (EMD)
Binding Specificity:	AA 187-213, C-Term
Reactivity:	Human
Host:	Rabbit
Clonality:	Polyclonal
Conjugate:	This Emerin antibody is un-conjugated
Application:	Western Blotting (WB), Flow Cytometry (FACS)

Product Details

Immunogen:	This EMD antibody is generated from rabbits immunized with a KLH conjugated synthetic peptide between 187-213 amino acids from the C-terminal region of human EMD.
Clone:	RB19617
Isotype:	Ig Fraction
Purification:	This antibody is prepared by Saturated Ammonium Sulfate (SAS) precipitation followed by dialysis against PBS.

Target Details

Target:	Emerin (EMD)
Alternative Name:	EMD (EMD Products)

Target Details

Background: Emerin is a serine-rich nuclear membrane protein and a member of the nuclear lamina-associated protein family. It mediates membrane anchorage to the cytoskeleton. Dreifuss-Emerin muscular dystrophy is an X-linked inherited degenerative myopathy resulting from mutation in the emerin gene.

Molecular Weight: 28994

Gene ID: 2010

NCBI Accession: [NP_000108](#)

UniProt: [P50402](#)

Application Details

Application Notes: WB: 1:1000. FC: 1:10~50

Restrictions: For Research Use only

Handling

Format: Liquid

Buffer: Purified polyclonal antibody supplied in PBS with 0.09 % (W/V) sodium azide.

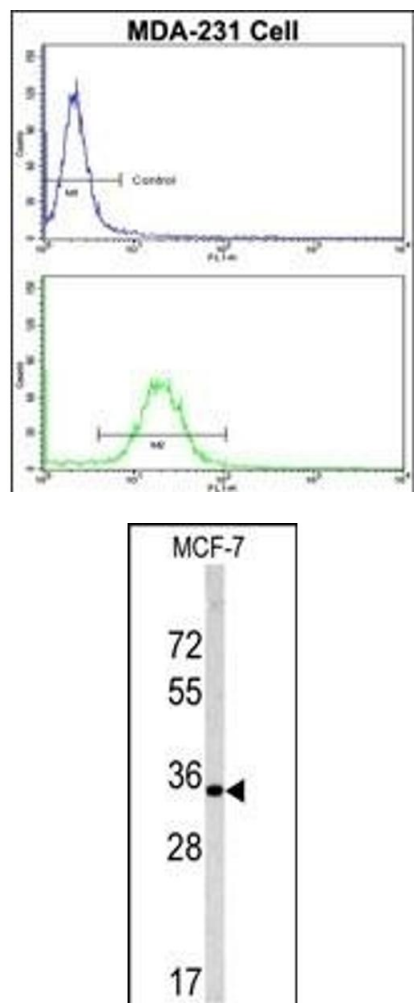
Preservative: Sodium azide

Precaution of Use: This product contains Sodium azide: a POISONOUS AND HAZARDOUS SUBSTANCE which should be handled by trained staff only.

Storage: 4 °C, -20 °C

Storage Comment: Maintain refrigerated at 2-8 °C for up to 6 months. For long term storage store at -20 °C in small aliquots to prevent freeze-thaw cycles.

Expiry Date: 6 months



Flow Cytometry

Image 1. Flow cytometric analysis of MDA-231 cells using EMD Antibody (C-term)(bottom histogram) compared to a negative control cell (top histogram). FITC-conjugated goat-anti-rabbit secondary antibodies were used for the analysis.

Western Blotting

Image 2. Western blot analysis of EMD antibody (C-term) (ABIN390427 and ABIN2840813) in MCF-7 cell line lysates (35 µg/lane). EMD (arrow) was detected using the purified Pab.