

Datasheet for ABIN390429

anti-ENO1 antibody (AA 178-205)**4** Images[Go to Product page](#)

Overview

Quantity:	400 µL
Target:	ENO1
Binding Specificity:	AA 178-205
Reactivity:	Human, Mouse
Host:	Rabbit
Clonality:	Polyclonal
Conjugate:	This ENO1 antibody is un-conjugated
Application:	Western Blotting (WB), Immunofluorescence (IF), Flow Cytometry (FACS), Immunohistochemistry (Paraffin-embedded Sections) (IHC (p))

Product Details

Immunogen:	This ENO1 antibody is generated from rabbits immunized with a KLH conjugated synthetic peptide between 178-205 amino acids from the Central region of human ENO1.
Clone:	RB19620
Isotype:	Ig Fraction
Predicted Reactivity:	B, C, Pr, Rat, X
Purification:	This antibody is prepared by Saturated Ammonium Sulfate (SAS) precipitation followed by dialysis against PBS.

Target Details

Target:	ENO1
---------	------

Target Details

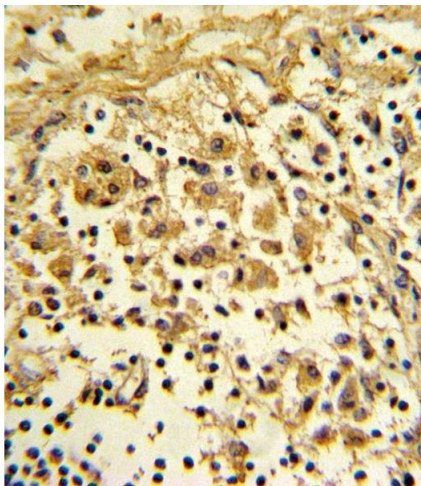
Alternative Name:	ENO1 (ENO1 Products)
Background:	ENO1 is one of three enolase isoenzymes found in mammals, it is alpha-enolase, a homodimeric soluble enzyme, and also a shorter monomeric structural lens protein, tau-crystallin. The two proteins are made from the same message. The full length protein, the isoenzyme, is found in the cytoplasm. The shorter protein is produced from an alternative translation start, is localized to the nucleus, and has been found to bind to an element in the c-myc promoter.
Molecular Weight:	47169
Gene ID:	2023
NCBI Accession:	NP_001188412 , NP_001419
UniProt:	P06733

Application Details

Application Notes:	IF: 1:10~50. WB: 1:1000. IHC-P: 1:10~50. FC: 1:10~50
Restrictions:	For Research Use only

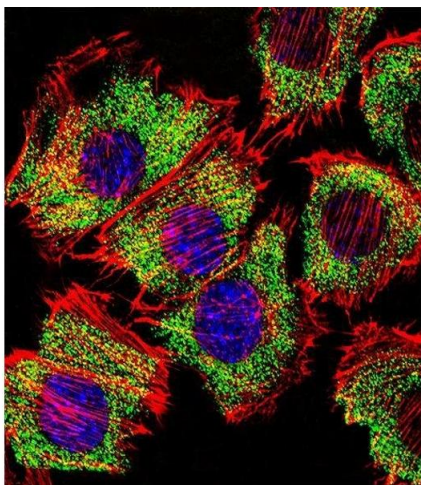
Handling

Format:	Liquid
Buffer:	Purified polyclonal antibody supplied in PBS with 0.09 % (W/V) sodium azide.
Preservative:	Sodium azide
Precaution of Use:	This product contains Sodium azide: a POISONOUS AND HAZARDOUS SUBSTANCE which should be handled by trained staff only.
Storage:	4 °C,-20 °C
Storage Comment:	Maintain refrigerated at 2-8 °C for up to 6 months. For long term storage store at -20 °C in small aliquots to prevent freeze-thaw cycles.
Expiry Date:	6 months



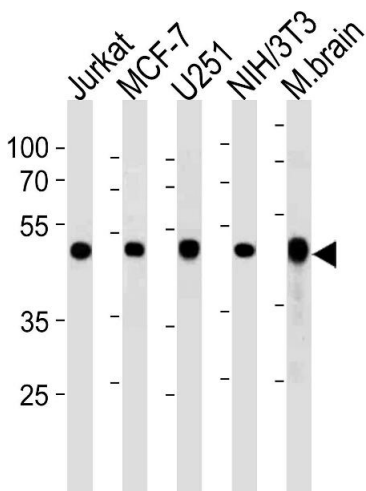
Immunohistochemistry (Paraffin-embedded Sections)

Image 1. Formalin-fixed and paraffin-embedded human lymph reacted with ENO1 Antibody (Center), which was peroxidase-conjugated to the secondary antibody, followed by DAB staining. This data demonstrates the use of this antibody for immunohistochemistry, clinical relevance has not been evaluated.



Immunofluorescence

Image 2. Fluorescent confocal image of C2C12 cell stained with ENO1 Antibody (Center) (ABIN390429 and ABIN2840814). C2C12 cells were fixed with 4 % PFA (20 min), permeabilized with Triton X-100 (0.1 %, 10 min), then incubated with ENO1 primary antibody (1:25, 1 h at 37 °C). For secondary antibody, Alexa Fluor® 488 conjugated donkey anti-rabbit antibody (green) was used (1:400, 50 min at 37 °C). Cytoplasmic actin was counterstained with Alexa Fluor® 555 (red) conjugated Phalloidin (7 units/mL, 1 h at 37 °C). Nuclei were counterstained with DAPI (blue) (10 µg/mL, 10 min). ENO1 immunoreactivity is localized to Cytoplasm significantly.



Western Blotting

Image 3. ENO1 Antibody (Center) (ABIN390429 and ABIN2840814) western blot analysis in Jurkat, MCF-7, mouse NIH/3T3 cell line and mouse brain tissue lysates (35 µg/lane). This demonstrates the ENO1 antibody detected the ENO1 protein (arrow).

Please check the [product details page](#) for more images. Overall 4 images are available for ABIN390429.