



Datasheet for ABIN390430 anti-EPN3 antibody (N-Term)



[Go to Product page](#)

3 Images

Overview

Quantity:	400 µL
Target:	EPN3
Binding Specificity:	AA 126-153, N-Term
Reactivity:	Human
Host:	Rabbit
Clonality:	Polyclonal
Conjugate:	This EPN3 antibody is un-conjugated
Application:	Western Blotting (WB), Flow Cytometry (FACS), Immunohistochemistry (Paraffin-embedded Sections) (IHC (p))

Product Details

Immunogen:	This EPN3 antibody is generated from rabbits immunized with a KLH conjugated synthetic peptide between 126-153 amino acids from the N-terminal region of human EPN3.
Clone:	RB19629
Isotype:	Ig Fraction
Predicted Reactivity:	M, Rat
Purification:	This antibody is prepared by Saturated Ammonium Sulfate (SAS) precipitation followed by dialysis against PBS.

Target Details

Target:	EPN3
---------	------

Target Details

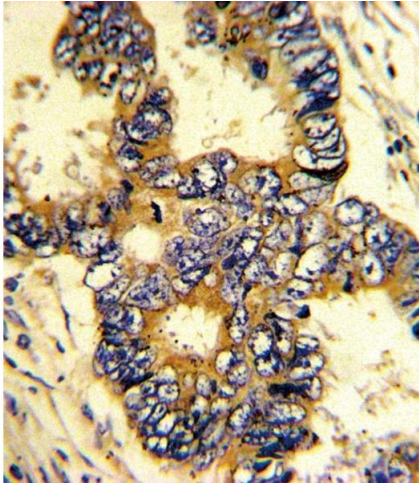
Alternative Name:	EPN3 (EPN3 Products)
Background:	EPN3 belongs to the epsin family.
Molecular Weight:	68222
Gene ID:	55040
NCBI Accession:	NP_060427
UniProt:	Q9H201

Application Details

Application Notes:	WB: 1:1000. IHC-P: 1:10~50. FC: 1:10~50
Restrictions:	For Research Use only

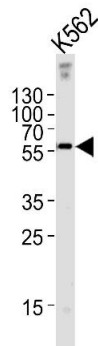
Handling

Format:	Liquid
Buffer:	Purified polyclonal antibody supplied in PBS with 0.09 % (W/V) sodium azide.
Preservative:	Sodium azide
Precaution of Use:	This product contains Sodium azide: a POISONOUS AND HAZARDOUS SUBSTANCE which should be handled by trained staff only.
Storage:	4 °C,-20 °C
Storage Comment:	Maintain refrigerated at 2-8 °C for up to 6 months. For long term storage store at -20 °C in small aliquots to prevent freeze-thaw cycles.
Expiry Date:	6 months



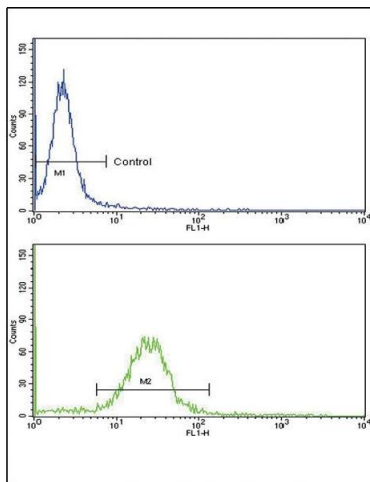
Immunohistochemistry (Paraffin-embedded Sections)

Image 1. Formalin-fixed and paraffin-embedded human colon carcinoma with EPN3 Antibody (N-term), which was peroxidase-conjugated to the secondary antibody, followed by DAB staining. This data demonstrates the use of this antibody for immunohistochemistry, clinical relevance has not been evaluated.



Western Blotting

Image 2. EPN3 Antibody (N-term) (ABIN390430 and ABIN2840815) western blot analysis in K562 cell line lysates (35 µg/lane). This demonstrates the EPN3 antibody detected the EPN3 protein (arrow).



Flow Cytometry

Image 3. Flow cytometric analysis of MDA-231 cells using EPN3 Antibody (N-term)(bottom histogram) compared to a negative control cell (top histogram). FITC-conjugated goat-anti-rabbit secondary antibodies were used for the analysis.