



Datasheet for ABIN390439

anti-Actin, gamma 1 antibody (AA 188-215)



[Go to Product page](#)

4 Images

Overview

Quantity:	400 µL
Target:	Actin, gamma 1 (ACTG1)
Binding Specificity:	AA 188-215
Reactivity:	Human
Host:	Rabbit
Clonality:	Polyclonal
Conjugate:	This Actin, gamma 1 antibody is un-conjugated
Application:	Western Blotting (WB), Flow Cytometry (FACS), Immunofluorescence (IF)

Product Details

Immunogen:	This ACTG1 antibody is generated from rabbits immunized with a KLH conjugated synthetic peptide between 188-215 amino acids from the Central region of human ACTG1.
Clone:	RB19691
Isotype:	Ig Fraction
Predicted Reactivity:	E, D, X, C, B, M, Rb, Rat, Zf, Ha, Hs, Pr, Pig, Sh, Y
Purification:	This antibody is prepared by Saturated Ammonium Sulfate (SAS) precipitation followed by dialysis against PBS.

Target Details

Target:	Actin, gamma 1 (ACTG1)
---------	------------------------

Target Details

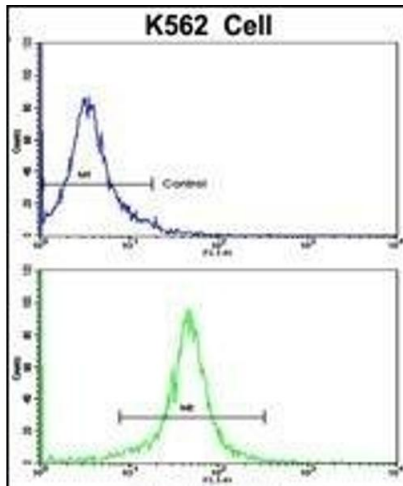
Alternative Name:	ACTG1 (ACTG1 Products)
Background:	Actins are highly conserved proteins that are involved in various types of cell motility, and maintenance of the cytoskeleton. In vertebrates, three main groups of actin isoforms, alpha, beta and gamma have been identified. The alpha actins are found in muscle tissues and are a major constituent of the contractile apparatus. The beta and gamma actins co-exist in most cell types as components of the cytoskeleton, and as mediators of internal cell motility. Actin, gamma 1, is a cytoplasmic actin found in nonmuscle cells.
Molecular Weight:	41793
Gene ID:	71
NCBI Accession:	NP_001186883 , NP_001605
UniProt:	P63261
Pathways:	Myometrial Relaxation and Contraction , Cell-Cell Junction Organization

Application Details

Application Notes:	IF: 1:10~50. WB: 1:1000. WB: 1:1000. FC: 1:10~50
Restrictions:	For Research Use only

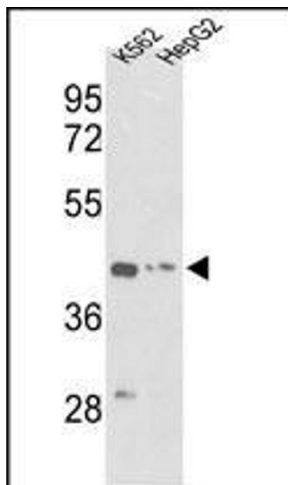
Handling

Format:	Liquid
Buffer:	Purified polyclonal antibody supplied in PBS with 0.09 % (W/V) sodium azide.
Preservative:	Sodium azide
Precaution of Use:	This product contains Sodium azide: a POISONOUS AND HAZARDOUS SUBSTANCE which should be handled by trained staff only.
Storage:	4 °C,-20 °C
Storage Comment:	Maintain refrigerated at 2-8 °C for up to 6 months. For long term storage store at -20 °C in small aliquots to prevent freeze-thaw cycles.
Expiry Date:	6 months



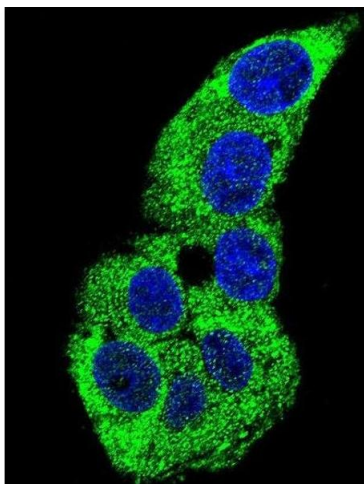
Flow Cytometry

Image 1. Flow cytometric analysis of K562 cells using ACTG1 Antibody (Center)(bottom histogram) compared to a negative control cell (top histogram). FITC-conjugated goat-anti-rabbit secondary antibodies were used for the analysis.



Western Blotting

Image 2. Western blot analysis of ACTG1 Antibody (Center) (ABIN390439 and ABIN2840819) in K562, HepG2 cell line lysates (35 µg/lane). ACTG1 (arrow) was detected using the purified Pab.



Immunofluorescence

Image 3. Confocal immunofluorescent analysis of ACTG1 Antibody (Center) (ABIN390439 and ABIN2840819) with HepG2 cell followed by Alexa Fluor 488-conjugated goat anti-rabbit IgG (green). DI was used to stain the cell nuclear (blue).

Please check the [product details page](#) for more images. Overall 4 images are available for ABIN390439.