

Datasheet for ABIN390444  
**anti-ORM1 antibody (C-Term)**[Go to Product page](#)

## 2 Images

## Overview

Quantity:	400 µL
Target:	ORM1
Binding Specificity:	AA 152-180, C-Term
Reactivity:	Human
Host:	Rabbit
Clonality:	Polyclonal
Conjugate:	This ORM1 antibody is un-conjugated
Application:	Western Blotting (WB), Flow Cytometry (FACS)

## Product Details

Immunogen:	This ORM1 antibody is generated from rabbits immunized with a KLH conjugated synthetic peptide between 152-180 amino acids from the C-terminal region of human ORM1.
Clone:	RB18448
Isotype:	Ig Fraction
Purification:	This antibody is prepared by Saturated Ammonium Sulfate (SAS) precipitation followed by dialysis against PBS.

## Target Details

Target:	ORM1
Alternative Name:	ORM1 ( <a href="#">ORM1 Products</a> )

## Target Details

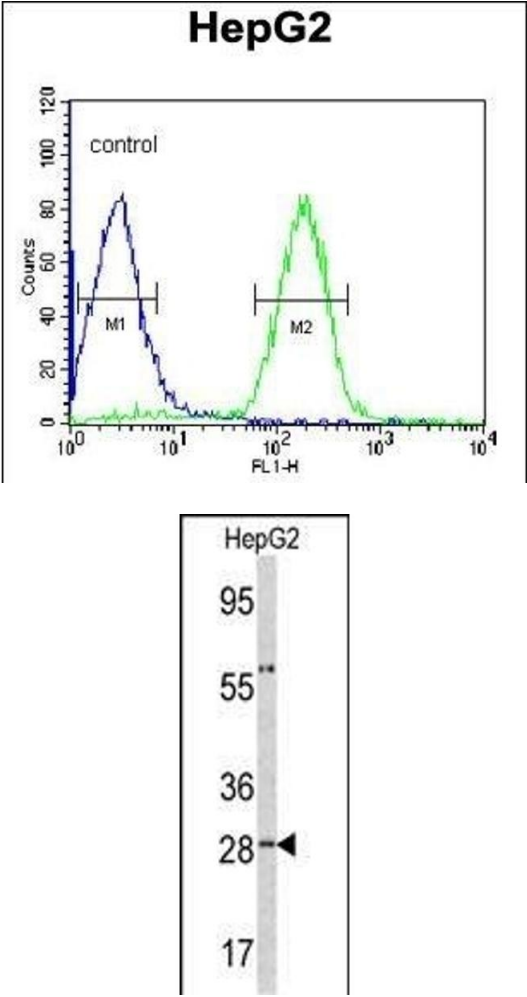
Background:	ORM1 is a key acute phase plasma protein. Because of its increase due to acute inflammation, this protein is classified as an acute-phase reactant. The specific function of this protein has not yet been determined, however, it may be involved in aspects of immunosuppression.
Molecular Weight:	23512
Gene ID:	5004
NCBI Accession:	<a href="#">NP_000598</a>
UniProt:	<a href="#">P02763</a>
Pathways:	<a href="#">Response to Growth Hormone Stimulus</a>

## Application Details

Application Notes:	WB: 1:1000. FC: 1:10~50
Restrictions:	For Research Use only

## Handling

Format:	Liquid
Buffer:	Purified polyclonal antibody supplied in PBS with 0.09 % (W/V) sodium azide.
Preservative:	Sodium azide
Precaution of Use:	This product contains Sodium azide: a POISONOUS AND HAZARDOUS SUBSTANCE which should be handled by trained staff only.
Storage:	4 °C,-20 °C
Storage Comment:	Maintain refrigerated at 2-8 °C for up to 6 months. For long term storage store at -20 °C in small aliquots to prevent freeze-thaw cycles.
Expiry Date:	6 months



Flow Cytometry

**Image 1.** ORM1 Antibody (C-term) (ABIN390444 and ABIN2840823) flow cytometric analysis of HepG2 cells (right histogram) compared to a negative control cell (left histogram).FITC-conjugated goat-anti-rabbit secondary antibodies were used for the analysis.

Western Blotting

**Image 2.** Western blot analysis of ORM1 antibody (C-term) (ABIN390444 and ABIN2840823) in HepG2 cell line lysates (35 µg/lane). ORM1 (arrow) was detected using the purified Pab.