

Datasheet for ABIN390450
anti-Albumin antibody (C-Term)

5 Images

1 Publication

[Go to Product page](#)

Overview

Quantity:	200 µL
Target:	Albumin (ALB)
Binding Specificity:	AA 540-569, C-Term
Reactivity:	Human, Mouse
Host:	Rabbit
Clonality:	Polyclonal
Conjugate:	This Albumin antibody is un-conjugated
Application:	Western Blotting (WB), Immunohistochemistry (Paraffin-embedded Sections) (IHC (p)), Flow Cytometry (FACS)

Product Details

Immunogen:	This ALB antibody is generated from rabbits immunized with a KLH conjugated synthetic peptide between 540-569 amino acids from the C-terminal region of human ALB.
Clone:	RB18676
Isotype:	Ig Fraction
Predicted Reactivity:	Hs, Pr
Purification:	This antibody is purified through a protein A column, followed by peptide affinity purification.

Target Details

Target:	Albumin (ALB)
---------	---------------

Target Details

Alternative Name:	ALB (ALB Products)
Background:	Albumin is a soluble, monomeric protein which comprises about one-half of the blood serum protein. Albumin functions primarily as a carrier protein for steroids, fatty acids, and thyroid hormones and plays a role in stabilizing extracellular fluid volume. Albumin is a globular unglycosylated serum protein of molecular weight 65,000. Albumin is synthesized in the liver as preproalbumin which has an N-terminal peptide that is removed before the nascent protein is released from the rough endoplasmic reticulum. The product, proalbumin, is in turn cleaved in the Golgi vesicles to produce the secreted albumin.
Molecular Weight:	69367
Gene ID:	213
NCBI Accession:	NP_000468
UniProt:	P02768
Pathways:	Lipid Metabolism

Application Details

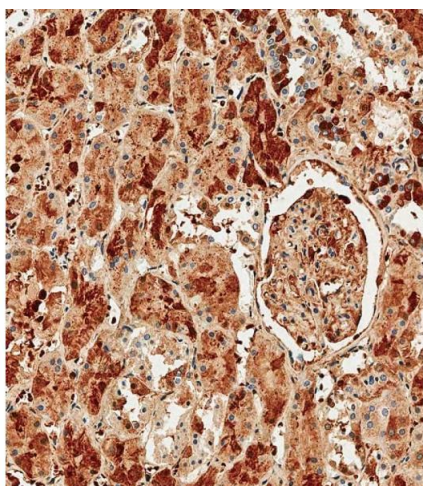
Application Notes:	WB: 1:1000. WB: 1:1000. IHC-P-Leica: 1:500. IHC-P-Leica: 1:500. FC: 1:10~50
Restrictions:	For Research Use only

Handling

Format:	Liquid
Buffer:	Purified polyclonal antibody supplied in PBS with 0.09 % (W/V) sodium azide.
Preservative:	Sodium azide
Precaution of Use:	This product contains Sodium azide: a POISONOUS AND HAZARDOUS SUBSTANCE which should be handled by trained staff only.
Handling Advice:	Avoid freeze-thaw cycles.
Storage:	4 °C,-20 °C
Storage Comment:	Maintain refrigerated at 2-8 °C for up to 6 months. For long term storage store at -20 °C in small aliquots.
Expiry Date:	6 months

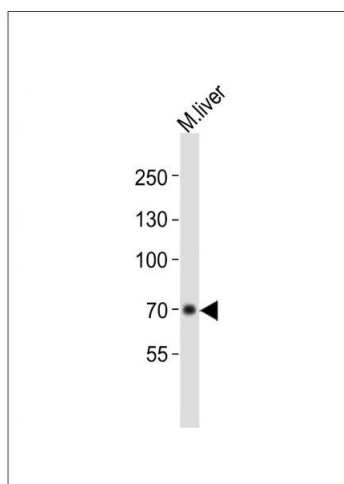
Product cited in: Kevin Li-Chun, Schob, Zeller, Pulli, Ali, Wang, Chiou, Tsang, Lee, Stossel, Chen: "Gelsolin decreases actin toxicity and inflammation in murine multiple sclerosis." in: **Journal of neuroimmunology**, Vol. 287, pp. 36-42, (2015) ([PubMed](#)).

Images



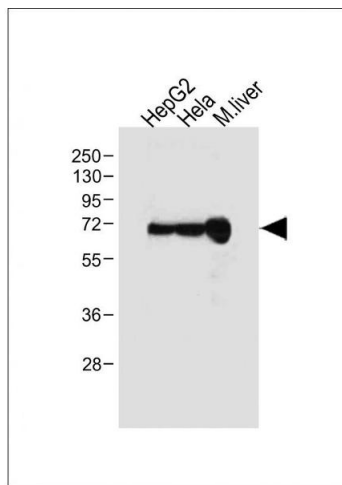
Immunohistochemistry (Paraffin-embedded Sections)

Image 1. Immunohistochemical analysis of paraffin-embedded Human kidney tissue using (ABIN390450 and ABIN2840824) performed on the Leica® BOND RXm. Tissue was fixed with formaldehyde at room temperature, antigen retrieval was by heat mediation with a EDTA buffer (pH 9.0). Samples were incubated with primary Antibody (1:500) for 1 hours at room temperature. A undiluted biotinylated CRF Anti-Polyvalent HRP Polymer antibody was used as the secondary antibody.



Western Blotting

Image 2. Anti-ALB Antibody (C-term) at 1:1000 dilution + mouse liver lysates Lysates/proteins at 20 µg per lane. Secondary Goat Anti-Rabbit IgG, (H+L), Peroxidase conjugated at 1/10000 dilution Predicted band size : 70 kDa Blocking/Dilution buffer: 5 % NFDM/TBST.



Western Blotting

Image 3. All lanes : Anti-ALB Antibody (C-term) at 1:1000 dilution Lane 1: HepG2 whole cell lysate Lane 2: Hela whole cell lysate Lane 3: Mouse liver tissue lysate Lysates/proteins at 20 µg per lane. Secondary Goat Anti-Rabbit IgG, (H+L), Peroxidase conjugated at 1/10000 dilution. Predicted band size : 69 kDa Blocking/Dilution buffer: 5 % NFDm/TBST.

Please check the [product details page](#) for more images. Overall 5 images are available for ABIN390450.