

Datasheet for ABIN390451
anti-CPB2 antibody (AA 119-148)[Go to Product page](#)

1 Image

Overview

Quantity:	400 µL
Target:	CPB2
Binding Specificity:	AA 119-148
Reactivity:	Human
Host:	Rabbit
Clonality:	Polyclonal
Conjugate:	This CPB2 antibody is un-conjugated
Application:	Western Blotting (WB)

Product Details

Immunogen:	This CPB2 antibody is generated from rabbits immunized with a KLH conjugated synthetic peptide between 119-148 amino acids from the Central region of human CPB2.
Clone:	RB19013
Isotype:	Ig Fraction
Purification:	This antibody is prepared by Saturated Ammonium Sulfate (SAS) precipitation followed by dialysis against PBS.

Target Details

Target:	CPB2
Alternative Name:	CPB2 (CPB2 Products)

Target Details

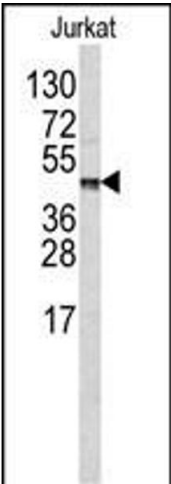
Background:	Carboxypeptidases are enzymes that hydrolyze C-terminal peptide bonds. The carboxypeptidase family includes metallo-, serine, and cysteine carboxypeptidases. According to their substrate specificity, these enzymes are referred to as carboxypeptidase A (cleaving aliphatic residues) or carboxypeptidase B (cleaving basic amino residues). CPB2 is activated by trypsin and acts on carboxypeptidase B substrates. After thrombin activation, the mature protein downregulates fibrinolysis. Polymorphisms have been described for its gene and its promoter region.
Molecular Weight:	48424
Gene ID:	1361
NCBI Accession:	NP_001265470 , NP_001863
UniProt:	Q96IY4
Pathways:	Regulation of Actin Filament Polymerization , Carbohydrate Homeostasis

Application Details

Application Notes:	WB: 1:1000
Restrictions:	For Research Use only

Handling

Format:	Liquid
Buffer:	Purified polyclonal antibody supplied in PBS with 0.09 % (W/V) sodium azide.
Preservative:	Sodium azide
Precaution of Use:	This product contains Sodium azide: a POISONOUS AND HAZARDOUS SUBSTANCE which should be handled by trained staff only.
Storage:	4 °C,-20 °C
Storage Comment:	Maintain refrigerated at 2-8 °C for up to 6 months. For long term storage store at -20 °C in small aliquots to prevent freeze-thaw cycles.
Expiry Date:	6 months



Western Blotting

Image 1. Western blot analysis of CPB2 antibody (Center) (ABIN390451 and ABIN2840825) in Jurkat cell line lysates (35 µg/lane). CPB2 (arrow) was detected using the purified Pab.