

Datasheet for ABIN390457
anti-HFE antibody (AA 122-148)



[Go to Product page](#)

2 Images

Overview

Quantity:	400 µL
Target:	HFE
Binding Specificity:	AA 122-148
Reactivity:	Human
Host:	Rabbit
Clonality:	Polyclonal
Conjugate:	This HFE antibody is un-conjugated
Application:	Western Blotting (WB), Immunohistochemistry (Paraffin-embedded Sections) (IHC (p))

Product Details

Immunogen:	This HFE antibody is generated from rabbits immunized with a KLH conjugated synthetic peptide between 122-148 amino acids from the Central region of human HFE.
Clone:	RB19120
Isotype:	Ig Fraction
Predicted Reactivity:	Rat
Purification:	This antibody is prepared by Saturated Ammonium Sulfate (SAS) precipitation followed by dialysis against PBS.

Target Details

Target:	HFE
---------	-----

Target Details

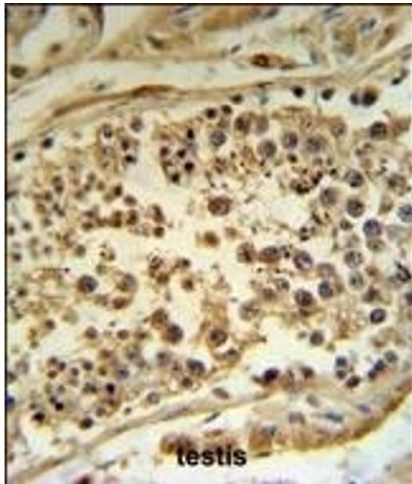
Alternative Name:	HFE (HFE Products)
Background:	HFE is a membrane protein that is similar to MHC class I-type proteins and associates with beta2-microglobulin (beta2M). It is thought that this protein functions to regulate iron absorption by regulating the interaction of the transferrin receptor with transferrin. The iron storage disorder, hereditary haemochromatosis, is a recessive genetic disorder that results from defects in its gene.
Molecular Weight:	40108
Gene ID:	3077
NCBI Accession:	NP_000401 , NP_620572 , NP_620573 , NP_620575 , NP_620576 , NP_620577 , NP_620578 , NP_620579 , NP_620580
UniProt:	Q30201
Pathways:	Transition Metal Ion Homeostasis , Regulation of Leukocyte Mediated Immunity , Positive Regulation of Immune Effector Process

Application Details

Application Notes:	WB: 1:1000. IHC-P: 1:50~100
Restrictions:	For Research Use only

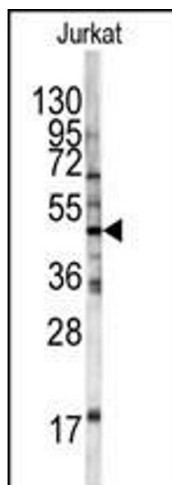
Handling

Format:	Liquid
Buffer:	Purified polyclonal antibody supplied in PBS with 0.09 % (W/V) sodium azide.
Preservative:	Sodium azide
Precaution of Use:	This product contains Sodium azide: a POISONOUS AND HAZARDOUS SUBSTANCE which should be handled by trained staff only.
Storage:	4 °C, -20 °C
Storage Comment:	Maintain refrigerated at 2-8 °C for up to 6 months. For long term storage store at -20 °C in small aliquots to prevent freeze-thaw cycles.
Expiry Date:	6 months



Immunohistochemistry (Paraffin-embedded Sections)

Image 1. HFE Antibody (Center) (ABIN390457 and ABIN2840827) IHC analysis in formalin fixed and paraffin embedded human testis tissue followed by peroxidase conjugation of the secondary antibody and DAB staining. This data demonstrates the use of the HFE Antibody (Center) for immunohistochemistry. Clinical relevance has not been evaluated.



Western Blotting

Image 2. Western blot analysis of HFE antibody (Center) (ABIN390457 and ABIN2840827) in Jurkat cell line lysates (35 µg/lane). HFE (arrow) was detected using the purified Pab.