

Datasheet for ABIN390465

anti-Casein alpha S1 antibody (AA 42-70)**3** Images[Go to Product page](#)

Overview

Quantity:	400 µL
Target:	Casein alpha S1 (CSN1S1)
Binding Specificity:	AA 42-70
Reactivity:	Human
Host:	Rabbit
Clonality:	Polyclonal
Conjugate:	This Casein alpha S1 antibody is un-conjugated
Application:	Western Blotting (WB), Flow Cytometry (FACS), Immunohistochemistry (Paraffin-embedded Sections) (IHC (p))

Product Details

Immunogen:	This CASA antibody is generated from rabbits immunized with a KLH conjugated synthetic peptide between 42-70 amino acids from the Central region of human CASA.
Clone:	RB18742
Isotype:	Ig Fraction
Purification:	This antibody is prepared by Saturated Ammonium Sulfate (SAS) precipitation followed by dialysis against PBS.

Target Details

Target:	Casein alpha S1 (CSN1S1)
Alternative Name:	CASA (CSN1S1 Products)

Target Details

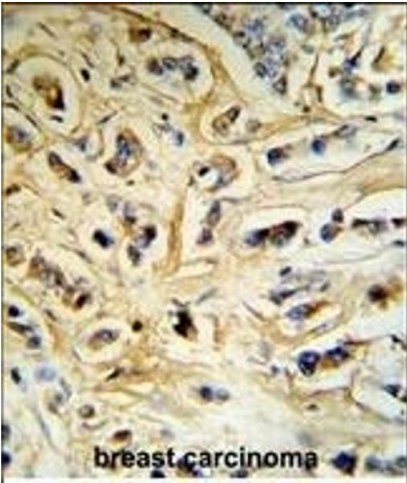
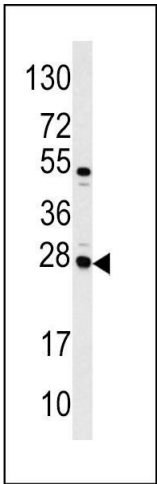
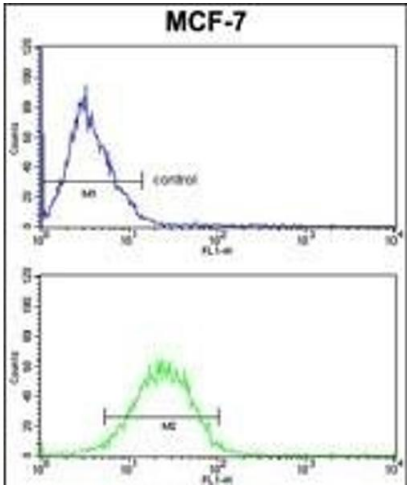
Background:	CASA play an important role in the capacity of milk to transport calcium phosphate. Casoxin D acts as opioid antagonist and has vasorelaxing activity mediated by bradykinin B1 receptors.
Molecular Weight:	21671
Gene ID:	1446
NCBI Accession:	NP_001020275 , NP_001881
UniProt:	P47710

Application Details

Application Notes:	WB: 1:1000. IHC-P: 1:50~100. FC: 1:10~50
Restrictions:	For Research Use only

Handling

Format:	Liquid
Buffer:	Purified polyclonal antibody supplied in PBS with 0.09 % (W/V) sodium azide.
Preservative:	Sodium azide
Precaution of Use:	This product contains Sodium azide: a POISONOUS AND HAZARDOUS SUBSTANCE which should be handled by trained staff only.
Storage:	4 °C,-20 °C
Storage Comment:	Maintain refrigerated at 2-8 °C for up to 6 months. For long term storage store at -20 °C in small aliquots to prevent freeze-thaw cycles.
Expiry Date:	6 months



Flow Cytometry

Image 1. CASA Antibody (Center) (ABIN390465 and ABIN2840834) FC analysis of MCF-7 cells (bottom histogram) compared to a negative control cell (top histogram). FITC-conjugated goat-anti-rabbit secondary antibodies were used for the analysis.

Western Blotting

Image 2. Western blot analysis of CASA antibody (Center) (ABIN390465 and ABIN2840834) in Jurkat cell line lysates (35 µg/lane). CASA (arrow) was detected using the purified Pab.

Immunohistochemistry (Paraffin-embedded Sections)

Image 3. CASA Antibody (Center) (R) IHC analysis in formalin fixed and paraffin embedded human breast carcinoma tissue followed by peroxidase conjugation of the secondary antibody and DAB staining. This data demonstrates the use of the CASA Antibody (Center) for immunohistochemistry. Clinical relevance has not been evaluated.