

Datasheet for ABIN390467  
**anti-WTX antibody (AA 681-708)**



[Go to Product page](#)

3 Images

## Overview

Quantity:	400 µL
Target:	WTX (AMER1)
Binding Specificity:	AA 681-708
Reactivity:	Human, Mouse
Host:	Rabbit
Clonality:	Polyclonal
Conjugate:	This WTX antibody is un-conjugated
Application:	Western Blotting (WB), Immunohistochemistry (Paraffin-embedded Sections) (IHC (p)), Flow Cytometry (FACS)

## Product Details

Immunogen:	This WTX antibody is generated from rabbits immunized with a KLH conjugated synthetic peptide between 681-708 amino acids from the Central region of human WTX.
Clone:	RB18795
Isotype:	Ig Fraction
Purification:	This antibody is prepared by Saturated Ammonium Sulfate (SAS) precipitation followed by dialysis against PBS.

## Target Details

Target:	WTX (AMER1)
Alternative Name:	WTX ( <a href="#">AMER1 Products</a> )

## Target Details

---

Background: WTX is involved in kidney development.

Molecular Weight: 124029

Gene ID: 139285

NCBI Accession: [NP\\_689637](#)

UniProt: [Q5JTC6](#)

## Application Details

---

Application Notes: WB: 1:1000. IHC-P: 1:50~100. FC: 1:10~50

Restrictions: For Research Use only

## Handling

---

Format: Liquid

Buffer: Purified polyclonal antibody supplied in PBS with 0.09 % (W/V) sodium azide.

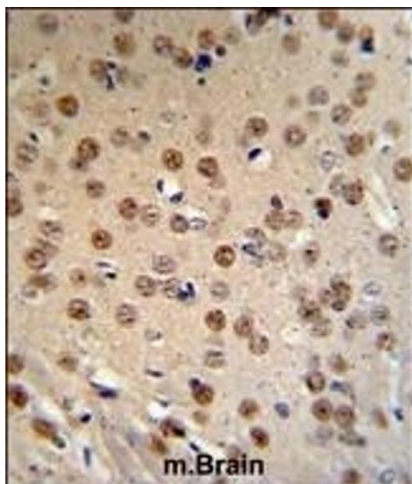
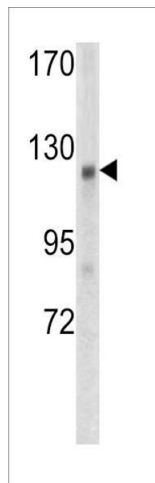
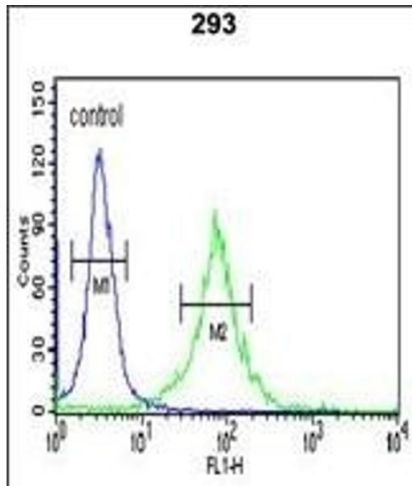
Preservative: Sodium azide

Precaution of Use: This product contains Sodium azide: a POISONOUS AND HAZARDOUS SUBSTANCE which should be handled by trained staff only.

Storage: 4 °C, -20 °C

Storage Comment: Maintain refrigerated at 2-8 °C for up to 6 months. For long term storage store at -20 °C in small aliquots to prevent freeze-thaw cycles.

Expiry Date: 6 months



### Flow Cytometry

**Image 1.** WTX Antibody (Center) (ABIN390467 and ABIN2840835) flow cytometric analysis of 293 cells (right histogram) compared to a negative control cell (left histogram). FITC-conjugated goat-anti-rabbit secondary antibodies were used for the analysis.

### Western Blotting

**Image 2.** Western blot analysis of WTX antibody (Center) (ABIN390467 and ABIN2840835) in mouse kidney tissue lysates (35 µg/lane). WTX (arrow) was detected using the purified Pab.

### Immunohistochemistry (Paraffin-embedded Sections)

**Image 3.** WTX Antibody (Center) (ABIN390467 and ABIN2840835) IHC analysis in formalin fixed and paraffin embedded mouse brain tissue followed by peroxidase conjugation of the secondary antibody and DAB staining. This data demonstrates the use of the WTX Antibody (Center) for immunohistochemistry. Clinical relevance has not been evaluated.