

Datasheet for ABIN390472
anti-SETD8 antibody (AA 220-249)[Go to Product page](#)

3 Images

Overview

Quantity:	400 µL
Target:	SETD8
Binding Specificity:	AA 220-249
Reactivity:	Human
Host:	Rabbit
Clonality:	Polyclonal
Conjugate:	This SETD8 antibody is un-conjugated
Application:	Western Blotting (WB), Immunohistochemistry (Paraffin-embedded Sections) (IHC (p)), Flow Cytometry (FACS)

Product Details

Immunogen:	This SETD8 antibody is generated from rabbits immunized with a KLH conjugated synthetic peptide between 220-249 amino acids from the Central region of human SETD8.
Clone:	RB18964
Isotype:	Ig Fraction
Predicted Reactivity:	B
Purification:	This antibody is prepared by Saturated Ammonium Sulfate (SAS) precipitation followed by dialysis against PBS.

Target Details

Target:	SETD8
---------	-------

Target Details

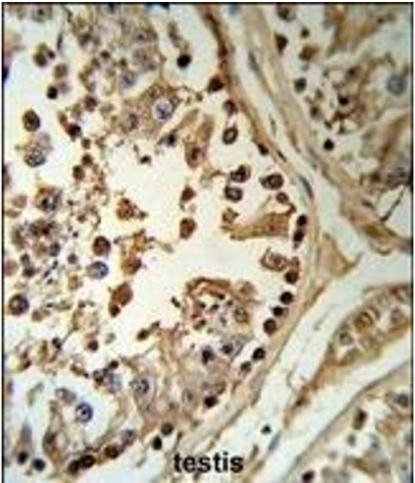
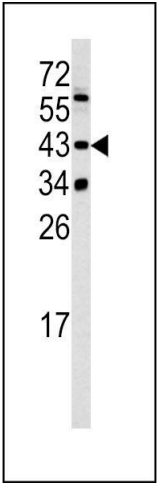
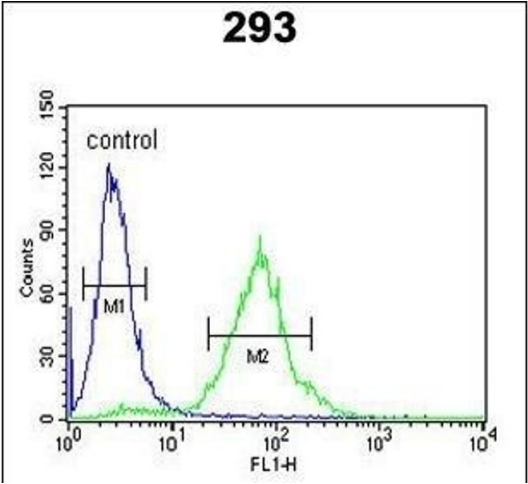
Alternative Name:	SETD8 (SETD8 Products)
Background:	SETD8 is a histone methyltransferase that specifically monomethylates 'Lys-20' of histone H4. H4 'Lys-20' monomethylation is enriched during mitosis and represents a specific tag for epigenetic transcriptional repression. The protein mainly functions in euchromatin regions, thereby playing a central role in the silencing of euchromatic genes. It is required for cell proliferation, probably by contributing to the maintenance of proper higher order structure of DNA during mitosis. It is also involved in chromosome condensation and proper cytokinesis. Nucleosomes are preferred as substrate compared to free histones.
Molecular Weight:	42890
Gene ID:	387893
NCBI Accession:	NP_065115
UniProt:	Q9NQR1

Application Details

Application Notes:	WB: 1:1000. IHC-P: 1:50~100. FC: 1:10~50
Restrictions:	For Research Use only

Handling

Format:	Liquid
Buffer:	Purified polyclonal antibody supplied in PBS with 0.09 % (W/V) sodium azide.
Preservative:	Sodium azide
Precaution of Use:	This product contains Sodium azide: a POISONOUS AND HAZARDOUS SUBSTANCE which should be handled by trained staff only.
Storage:	4 °C,-20 °C
Storage Comment:	Maintain refrigerated at 2-8 °C for up to 6 months. For long term storage store at -20 °C in small aliquots to prevent freeze-thaw cycles.
Expiry Date:	6 months



Flow Cytometry

Image 1. SETD8 Antibody (Center) (ABIN390472 and ABIN2840838) flow cytometric analysis of 293 cells (right histogram) compared to a negative control cell (left histogram). FITC-conjugated goat-anti-rabbit secondary antibodies were used for the analysis.

Western Blotting

Image 2. Western blot analysis of SETD8 antibody (Center) (ABIN390472 and ABIN2840838) in 293 cell line lysates (35 µg/lane). SETD8 (arrow) was detected using the purified Pab.

Immunohistochemistry (Paraffin-embedded Sections)

Image 3. SETD8 Antibody (Center) (R) IHC analysis in formalin fixed and paraffin embedded human testis tissue followed by peroxidase conjugation of the secondary antibody and DAB staining. This data demonstrates the use of the SETD8 Antibody (Center) for immunohistochemistry. Clinical relevance has not been evaluated.