

Datasheet for ABIN390477

anti-SERPINB2 antibody (AA 116-144)



[Go to Product page](#)

2 Images

1 Publication

Overview

Quantity:	400 µL
Target:	SERPINB2
Binding Specificity:	AA 116-144
Reactivity:	Human
Host:	Rabbit
Clonality:	Polyclonal
Conjugate:	This SERPINB2 antibody is un-conjugated
Application:	Western Blotting (WB), Immunohistochemistry (Paraffin-embedded Sections) (IHC (p))

Product Details

Immunogen:	This PAI2 antibody is generated from rabbits immunized with a KLH conjugated synthetic peptide between 116-144 amino acids from the Central region of human PAI2.
Clone:	RB19097
Isotype:	Ig Fraction
Purification:	This antibody is prepared by Saturated Ammonium Sulfate (SAS) precipitation followed by dialysis against PBS.

Target Details

Target:	SERPINB2
Alternative Name:	PAI2 (SERPINB2 Products)

Target Details

Target Type:	Amino Acid
Background:	PAI2 inhibits urokinase-type plasminogen activator. The monocyte derived PAI-2 is distinct from the endothelial cell-derived PAI-1.
Molecular Weight:	46596
Gene ID:	5055
NCBI Accession:	NP_001137290 , NP_002566
UniProt:	P05120
Pathways:	Autophagy

Application Details

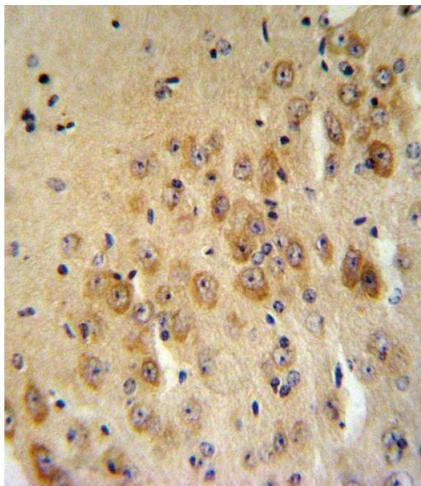
Application Notes:	WB: 1:1000. IHC-P: 1:10~50
Restrictions:	For Research Use only

Handling

Format:	Liquid
Buffer:	Purified polyclonal antibody supplied in PBS with 0.09 % (W/V) sodium azide.
Preservative:	Sodium azide
Precaution of Use:	This product contains Sodium azide: a POISONOUS AND HAZARDOUS SUBSTANCE which should be handled by trained staff only.
Storage:	4 °C,-20 °C
Storage Comment:	Maintain refrigerated at 2-8 °C for up to 6 months. For long term storage store at -20 °C in small aliquots to prevent freeze-thaw cycles.
Expiry Date:	6 months

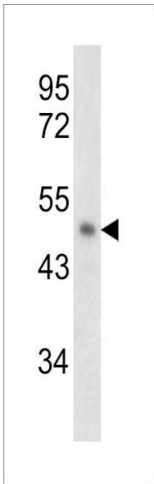
Publications

Product cited in:	Lei, Chen, Huang, Wu, Lin, Lai: "Proteomic analysis of the effect of extracellular calcium ions on human mesenchymal stem cells: Implications for bone tissue engineering." in: Chemico-biological interactions , Vol. 233, pp. 139-46, (2015) (PubMed).
-------------------	---



Immunohistochemistry (Paraffin-embedded Sections)

Image 1. I2 Antibody (Center) (ABIN390477 and ABIN2840842) IHC analysis in formalin fixed and raffin embedded mouse brain tissue followed by peroxidase conjugation of the secondary antibody and DAB staining. This data demonstrates the use of the I2 Antibody (Center) for immunohistochemistry. Clinical relevance has not been evaluated.



Western Blotting

Image 2. Western blot analysis of I2 antibody (Center) (ABIN390477 and ABIN2840842) in NCI- cell line lysates (35 µg/lane). I2 (arrow) was detected using the purified b.