

Datasheet for ABIN390478

anti-Prostate Specific Antigen antibody (C-Term)**2** Images[Go to Product page](#)

Overview

| | |
|----------------------|--|
| Quantity: | 400 µL |
| Target: | Prostate Specific Antigen (PSA) |
| Binding Specificity: | AA 709-737, C-Term |
| Reactivity: | Human |
| Host: | Rabbit |
| Clonality: | Polyclonal |
| Conjugate: | This Prostate Specific Antigen antibody is un-conjugated |
| Application: | Western Blotting (WB), Immunohistochemistry (Paraffin-embedded Sections) (IHC (p)) |

Product Details

| | |
|---------------|--|
| Immunogen: | This PSA antibody is generated from rabbits immunized with a KLH conjugated synthetic peptide between 709-737 amino acids from the C-terminal region of human PSA. |
| Clone: | RB19102 |
| Isotype: | Ig Fraction |
| Purification: | This antibody is prepared by Saturated Ammonium Sulfate (SAS) precipitation followed by dialysis against PBS. |

Target Details

| | |
|-------------------|--------------------------------------|
| Target: | Prostate Specific Antigen (PSA) |
| Alternative Name: | PSA (PSA Products) |

Target Details

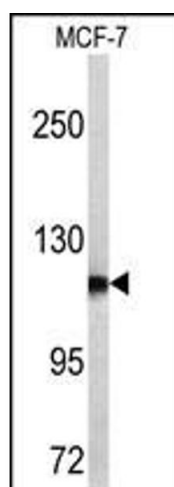
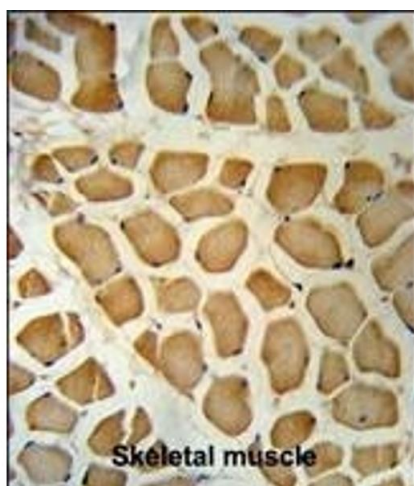
| | |
|-------------------|--|
| Background: | PSA is the puromycin-sensitive aminopeptidase, a zinc metallopeptidase which hydrolyzes amino acids from the N-terminus of its substrate. The protein has been localized to both the cytoplasm and to cellular membranes. This enzyme degrades enkaphalins in the brain, and studies in mouse suggest that it is involved in proteolytic events regulating the cell cycle. |
| Molecular Weight: | 103276 |
| Gene ID: | 9520 |
| NCBI Accession: | NP_006301 |
| UniProt: | P55786 |
| Pathways: | Complement System |

Application Details

| | |
|--------------------|-----------------------------|
| Application Notes: | WB: 1:1000. IHC-P: 1:50~100 |
| Restrictions: | For Research Use only |

Handling

| | |
|--------------------|--|
| Format: | Liquid |
| Buffer: | Purified polyclonal antibody supplied in PBS with 0.09 % (W/V) sodium azide. |
| Preservative: | Sodium azide |
| Precaution of Use: | This product contains Sodium azide: a POISONOUS AND HAZARDOUS SUBSTANCE which should be handled by trained staff only. |
| Storage: | 4 °C,-20 °C |
| Storage Comment: | Maintain refrigerated at 2-8 °C for up to 6 months. For long term storage store at -20 °C in small aliquots to prevent freeze-thaw cycles. |
| Expiry Date: | 6 months |



Immunohistochemistry (Paraffin-embedded Sections)

Image 1. PSA Antibody (C-term) (ABIN390478 and ABIN2840843) IHC analysis in formalin fixed and paraffin embedded human Skeletal muscle followed by peroxidase conjugation of the secondary antibody and DAB staining. This data demonstrates the use of the PSA Antibody (C-term) for immunohistochemistry. Clinical relevance has not been evaluated.

Western Blotting

Image 2. Western blot analysis of PSA antibody (C-term) (ABIN390478 and ABIN2840843) in MCF-7 cell line lysates (35 µg/lane). PSA (arrow) was detected using the purified Pab.