

Datasheet for ABIN390480
anti-YAP1 antibody (C-Term)



[Go to Product page](#)

2 Images

Overview

Quantity:	400 µL
Target:	YAP1
Binding Specificity:	AA 420-446, C-Term
Reactivity:	Human
Host:	Rabbit
Clonality:	Polyclonal
Conjugate:	This YAP1 antibody is un-conjugated
Application:	Western Blotting (WB), Flow Cytometry (FACS)

Product Details

Immunogen:	This YAP1 antibody is generated from rabbits immunized with a KLH conjugated synthetic peptide between 420-446 amino acids from the C-terminal region of human YAP1.
Clone:	RB19212
Isotype:	Ig Fraction
Purification:	This antibody is prepared by Saturated Ammonium Sulfate (SAS) precipitation followed by dialysis against PBS.

Target Details

Target:	YAP1
Alternative Name:	YAP1 (YAP1 Products)

Target Details

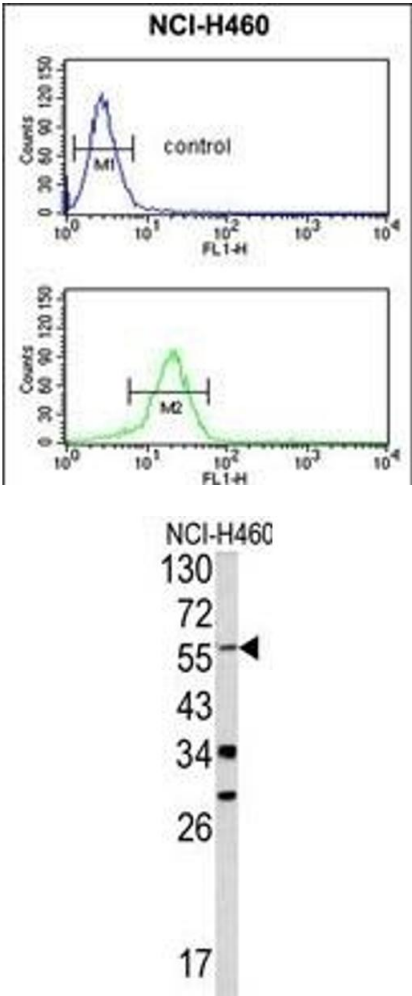
Background:	YAP1 is the human ortholog of chicken YAP protein which binds to the SH3 domain of the Yes proto-oncogene product. This protein contains a WW domain that is found in various structural, regulatory and signaling molecules in yeast, nematode, and mammals, and may be involved in protein-protein interaction.
Molecular Weight:	54462
Gene ID:	10413
NCBI Accession:	NP_001123617 , NP_001181973 , NP_001181974 , NP_001269027 , NP_001269028 , NP_001269029 , NP_001269030
UniProt:	P46937
Pathways:	MAPK Signaling , Stem Cell Maintenance , Regulation of Lipid Metabolism by PPARalpha

Application Details

Application Notes:	WB: 1:1000. FC: 1:10~50
Restrictions:	For Research Use only

Handling

Format:	Liquid
Buffer:	Purified polyclonal antibody supplied in PBS with 0.09 % (W/V) sodium azide.
Preservative:	Sodium azide
Precaution of Use:	This product contains Sodium azide: a POISONOUS AND HAZARDOUS SUBSTANCE which should be handled by trained staff only.
Storage:	4 °C, -20 °C
Storage Comment:	Maintain refrigerated at 2-8 °C for up to 6 months. For long term storage store at -20 °C in small aliquots to prevent freeze-thaw cycles.
Expiry Date:	6 months



Flow Cytometry

Image 1. Y antibody (C-term) (ABIN390480 and ABIN2840844) flow cytometric analysis of NCI- cells (bottom histogram) compared to a negative control cell (top histogram).FITC-conjugated goat-anti-rabbit secondary antibodies were used for the analysis.

Western Blotting

Image 2. Western blot analysis of Y antibody (C-term) (ABIN390480 and ABIN2840844) in NCI- cell line lysates (35 µg/lane). Y (arrow) was detected using the purified Pab.