

Datasheet for ABIN390481
anti-CRAT antibody (N-Term)[Go to Product page](#)

2 Images

Overview

| | |
|----------------------|--|
| Quantity: | 400 µL |
| Target: | CRAT |
| Binding Specificity: | AA 66-96, N-Term |
| Reactivity: | Human |
| Host: | Rabbit |
| Clonality: | Polyclonal |
| Conjugate: | This CRAT antibody is un-conjugated |
| Application: | Western Blotting (WB), Immunohistochemistry (Paraffin-embedded Sections) (IHC (p)) |

Product Details

| | |
|---------------|--|
| Immunogen: | This CRAT antibody is generated from rabbits immunized with a KLH conjugated synthetic peptide between 66-96 amino acids from the N-terminal region of human CRAT. |
| Clone: | RB19231 |
| Isotype: | Ig Fraction |
| Purification: | This antibody is prepared by Saturated Ammonium Sulfate (SAS) precipitation followed by dialysis against PBS. |

Target Details

| | |
|-------------------|--|
| Target: | CRAT |
| Alternative Name: | CRAT (CRAT Products) |

Target Details

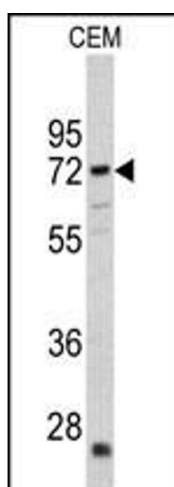
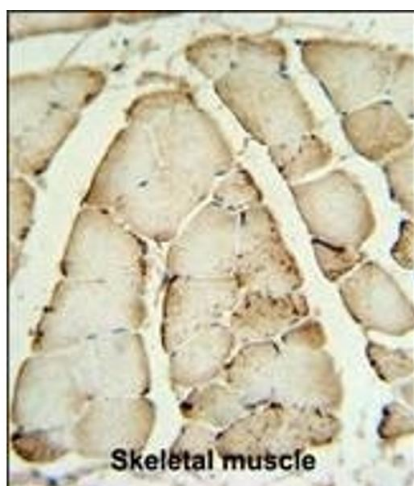
| | |
|-------------------|--|
| Background: | CRAT is carnitine acetyltransferase (CRAT), which is a key enzyme in the metabolic pathway in mitochondria, peroxisomes and endoplasmic reticulum. CRAT catalyzes the reversible transfer of acyl groups from an acyl-CoA thioester to carnitine and regulates the ratio of acylCoA/CoA in the subcellular compartments. |
| Molecular Weight: | 70858 |
| Gene ID: | 1384 |
| NCBI Accession: | NP_000746 , NP_001244292 |
| UniProt: | P43155 |
| Pathways: | Monocarboxylic Acid Catabolic Process |

Application Details

| | |
|--------------------|-----------------------------|
| Application Notes: | WB: 1:1000. IHC-P: 1:50~100 |
| Restrictions: | For Research Use only |

Handling

| | |
|--------------------|--|
| Format: | Liquid |
| Buffer: | Purified polyclonal antibody supplied in PBS with 0.09 % (W/V) sodium azide. |
| Preservative: | Sodium azide |
| Precaution of Use: | This product contains Sodium azide: a POISONOUS AND HAZARDOUS SUBSTANCE which should be handled by trained staff only. |
| Storage: | 4 °C,-20 °C |
| Storage Comment: | Maintain refrigerated at 2-8 °C for up to 6 months. For long term storage store at -20 °C in small aliquots to prevent freeze-thaw cycles. |
| Expiry Date: | 6 months |



Immunohistochemistry (Paraffin-embedded Sections)

Image 1. CRAT Antibody (N-term) (ABIN390481 and ABIN2840845) IHC analysis in formalin fixed and paraffin embedded human Skeletal muscle followed by peroxidase conjugation of the secondary antibody and DAB staining. This data demonstrates the use of the CRAT Antibody (N-term) for immunohistochemistry. Clinical relevance has not been evaluated.

Western Blotting

Image 2. Western blot analysis of CRAT antibody (N-term) (ABIN390481 and ABIN2840845) in CEM cell line lysates (35 µg/lane). CRAT (arrow) was detected using the purified Pab.