

Datasheet for ABIN390486

**anti-Cathepsin E antibody (AA 157-187)****5** Images[Go to Product page](#)

## Overview

|                      |                                                                                                           |
|----------------------|-----------------------------------------------------------------------------------------------------------|
| Quantity:            | 400 µL                                                                                                    |
| Target:              | Cathepsin E (CTSE)                                                                                        |
| Binding Specificity: | AA 157-187                                                                                                |
| Reactivity:          | Human, Mouse, Rat                                                                                         |
| Host:                | Rabbit                                                                                                    |
| Clonality:           | Polyclonal                                                                                                |
| Conjugate:           | This Cathepsin E antibody is un-conjugated                                                                |
| Application:         | Western Blotting (WB), Immunohistochemistry (Paraffin-embedded Sections) (IHC (p)), Flow Cytometry (FACS) |

## Product Details

|               |                                                                                                                                                                   |
|---------------|-------------------------------------------------------------------------------------------------------------------------------------------------------------------|
| Immunogen:    | This CTSE antibody is generated from rabbits immunized with a KLH conjugated synthetic peptide between 157-187 amino acids from the Central region of human CTSE. |
| Clone:        | RB19246                                                                                                                                                           |
| Isotype:      | Ig Fraction                                                                                                                                                       |
| Purification: | This antibody is purified through a protein A column, followed by peptide affinity purification.                                                                  |

## Target Details

|                   |                                        |
|-------------------|----------------------------------------|
| Target:           | Cathepsin E (CTSE)                     |
| Alternative Name: | CTSE ( <a href="#">CTSE Products</a> ) |

## Target Details

**Background:** CTSE is a gastric aspartyl protease that functions as a disulfide-linked homodimer. This protease, which is a member of the peptidase C1 family, has a specificity similar to that of pepsin A and cathepsin D. It is an intracellular proteinase that does not appear to be involved in the digestion of dietary protein and is found in highest concentration in the surface of epithelial mucus-producing cells of the stomach. It is the first aspartic proteinase expressed in the fetal stomach and is found in more than half of gastric cancers. It appears, therefore, to be an oncofetal antigen.

**Molecular Weight:** 42794

**Gene ID:** 1510

**NCBI Accession:** [NP\\_001901](#), [NP\\_683865](#)

**UniProt:** [P14091](#)

## Application Details

**Application Notes:** WB: 1:500-1:2000. WB: 1:2000. WB: 1:2000. IHC-P: 1:50~100. FC: 1:10~50

**Restrictions:** For Research Use only

## Handling

**Format:** Liquid

**Buffer:** Purified polyclonal antibody supplied in PBS with 0.09 % (W/V) sodium azide.

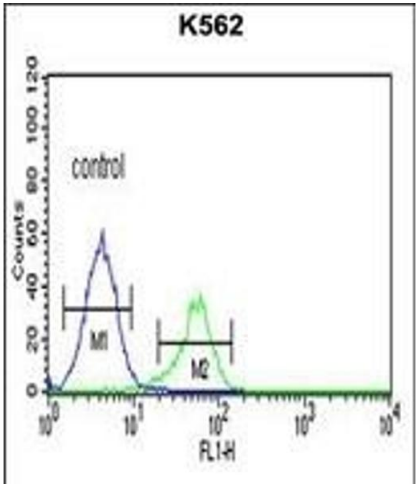
**Preservative:** Sodium azide

**Precaution of Use:** This product contains Sodium azide: a POISONOUS AND HAZARDOUS SUBSTANCE which should be handled by trained staff only.

**Storage:** 4 °C, -20 °C

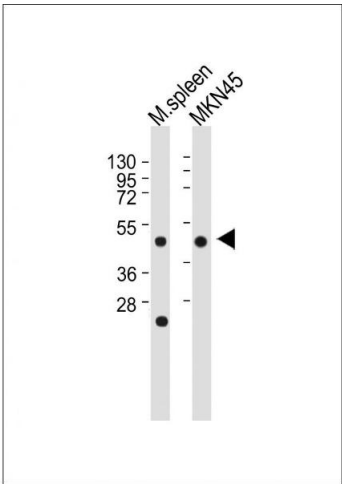
**Storage Comment:** Maintain refrigerated at 2-8 °C for up to 6 months. For long term storage store at -20 °C in small aliquots to prevent freeze-thaw cycles.

**Expiry Date:** 6 months



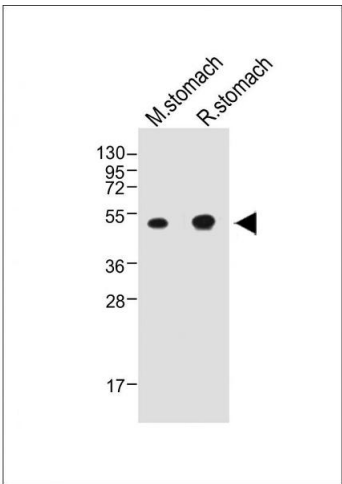
### Flow Cytometry

**Image 1.** CTSE Antibody (Center) (ABIN390486 and ABIN2840847) flow cytometric analysis of K562 cells (right histogram) compared to a negative control cell (left histogram). FITC-conjugated goat-anti-rabbit secondary antibodies were used for the analysis.



### Western Blotting

**Image 2.** All lanes : Anti-CTSE Antibody (Center) at 1:500-1:2000 dilution Lane 1: Mouse spleen whole tissue lysate Lane 2: MKN45 whole cell lysate Lysates/proteins at 20 µg per lane. Secondary Goat Anti-Rabbit IgG, (H+L), Peroxidase conjugated at 1:10000 dilution. Predicted band size : 43 kDa Blocking/Dilution buffer: 5 % NFDm/TBST.



### Western Blotting

**Image 3.** All lanes : Anti-CTSE Antibody (Center) at 1:2000 dilution Lane 1: Mouse stomach whole tissue lysate Lane 2: Rat stomach whole tissue lysate Lysates/proteins at 20 µg per lane. Secondary Goat Anti-Rabbit IgG, (H+L), Peroxidase conjugated at 1/10000 dilution. Predicted band size : 43 kDa Blocking/Dilution buffer: 5 % NFDm/TBST.

Please check the [product details page](#) for more images. Overall 5 images are available for ABIN390486.