



[Go to Product page](#)

Datasheet for ABIN390490

anti-Endonuclease G antibody (C-Term)

2 Images

Overview

Quantity:	400 µL
Target:	Endonuclease G (ENDOG)
Binding Specificity:	AA 188-217, C-Term
Reactivity:	Human, Mouse
Host:	Rabbit
Clonality:	Polyclonal
Conjugate:	This Endonuclease G antibody is un-conjugated
Application:	Western Blotting (WB), Flow Cytometry (FACS)

Product Details

Immunogen:	This ENDOG antibody is generated from rabbits immunized with a KLH conjugated synthetic peptide between 188-217 amino acids from the C-terminal region of human ENDOG.
Clone:	RB19287
Isotype:	Ig Fraction
Predicted Reactivity:	B
Purification:	This antibody is prepared by Saturated Ammonium Sulfate (SAS) precipitation followed by dialysis against PBS.

Target Details

Target:	Endonuclease G (ENDOG)
---------	------------------------

Target Details

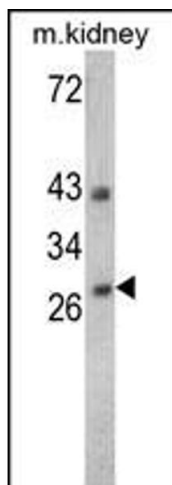
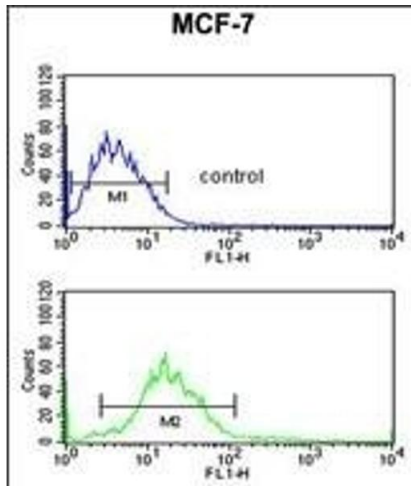
Alternative Name:	ENDOG (ENDOG Products)
Background:	ENDOG is a nuclear encoded endonuclease that is localized in the mitochondrion. The protein is widely distributed among animals and cleaves DNA at GC tracts. This protein is capable of generating the RNA primers required by DNA polymerase gamma to initiate replication of mitochondrial DNA.
Molecular Weight:	32620
Gene ID:	2021
NCBI Accession:	NP_004426
UniProt:	Q14249
Pathways:	Apoptosis

Application Details

Application Notes:	WB: 1:1000. FC: 1:10~50
Restrictions:	For Research Use only

Handling

Format:	Liquid
Buffer:	Purified polyclonal antibody supplied in PBS with 0.09 % (W/V) sodium azide.
Preservative:	Sodium azide
Precaution of Use:	This product contains Sodium azide: a POISONOUS AND HAZARDOUS SUBSTANCE which should be handled by trained staff only.
Storage:	4 °C, -20 °C
Storage Comment:	Maintain refrigerated at 2-8 °C for up to 6 months. For long term storage store at -20 °C in small aliquots to prevent freeze-thaw cycles.
Expiry Date:	6 months



Flow Cytometry

Image 1. ENDOG Antibody (C-term) (ABIN390490 and ABIN2840849) flow cytometric analysis of MCF-7 cells (bottom histogram) compared to a negative control cell (top histogram). FITC-conjugated goat-anti-rabbit secondary antibodies were used for the analysis.

Western Blotting

Image 2. Western blot analysis of ENDOG Antibody (C-term) (Cat. 3(ABIN390490 and ABIN2840849)) in 293, K562, Jurkat, NCI- cell line lysates and mouse kidney tissues lysates (35 µg/lane). ENDOG (arrow) was detected using the purified Pab.