

Datasheet for ABIN390492  
**anti-FUT1 antibody (AA 164-195)**

## 2 Images

[Go to Product page](#)

## Overview

Quantity:	400 µL
Target:	FUT1
Binding Specificity:	AA 164-195
Reactivity:	Human
Host:	Rabbit
Clonality:	Polyclonal
Conjugate:	This FUT1 antibody is un-conjugated
Application:	Western Blotting (WB), Flow Cytometry (FACS)

## Product Details

Immunogen:	This FUT1 antibody is generated from rabbits immunized with a KLH conjugated synthetic peptide between 164-195 amino acids from the Central region of human FUT1.
Clone:	RB19324
Isotype:	Ig Fraction
Predicted Reactivity:	Rb
Purification:	This antibody is prepared by Saturated Ammonium Sulfate (SAS) precipitation followed by dialysis against PBS.

## Target Details

Target:	FUT1
---------	------

## Target Details

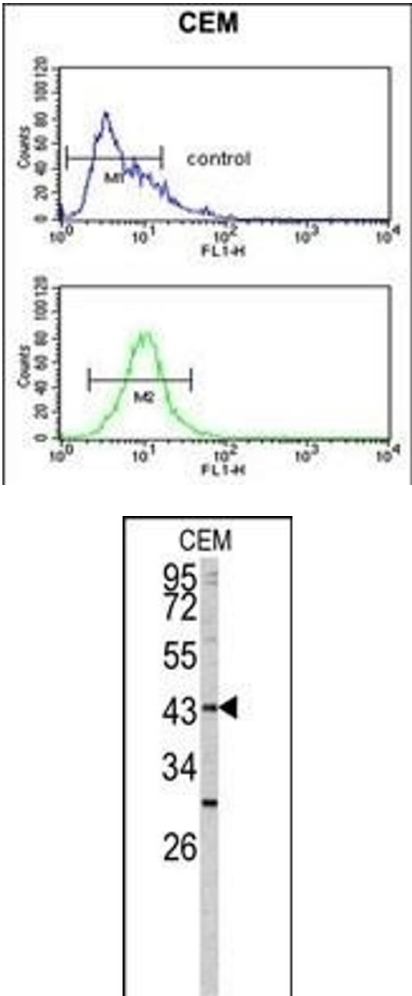
Alternative Name:	FUT1 ( <a href="#">FUT1 Products</a> )
Background:	FUT1 is a Golgi stack membrane protein that is involved in the creation of a precursor of the H antigen, which is required for the final step in the soluble A and B antigen synthesis pathway.
Molecular Weight:	41251
Gene ID:	2523
NCBI Accession:	<a href="#">NP_000139</a>
UniProt:	<a href="#">P19526</a>

## Application Details

Application Notes:	WB: 1:1000. FC: 1:10~50
Restrictions:	For Research Use only

## Handling

Format:	Liquid
Buffer:	Purified polyclonal antibody supplied in PBS with 0.09 % (W/V) sodium azide.
Preservative:	Sodium azide
Precaution of Use:	This product contains Sodium azide: a POISONOUS AND HAZARDOUS SUBSTANCE which should be handled by trained staff only.
Storage:	4 °C,-20 °C
Storage Comment:	Maintain refrigerated at 2-8 °C for up to 6 months. For long term storage store at -20 °C in small aliquots to prevent freeze-thaw cycles.
Expiry Date:	6 months



Flow Cytometry

**Image 1.** FUT1 Antibody (Center) (ABIN390492 and ABIN2840851) flow cytometric analysis of CEM cells (bottom histogram) compared to a negative control cell (top histogram).FITC-conjugated goat-anti-rabbit secondary antibodies were used for the analysis.

Western Blotting

**Image 2.** Western blot analysis of FUT1 antibody (Center) (ABIN390492 and ABIN2840851) in CEM cell line lysates (35 µg/lane). FUT1 (arrow) was detected using the purified Pab.