

Datasheet for ABIN390496
anti-GZMB antibody (C-Term)[Go to Product page](#)

4 Images

Overview

Quantity:	400 µL
Target:	GZMB
Binding Specificity:	AA 175-203, C-Term
Reactivity:	Human
Host:	Rabbit
Clonality:	Polyclonal
Conjugate:	This GZMB antibody is un-conjugated
Application:	Western Blotting (WB), Flow Cytometry (FACS), Immunohistochemistry (Paraffin-embedded Sections) (IHC (p))

Product Details

Immunogen:	This GZMB antibody is generated from rabbits immunized with a KLH conjugated synthetic peptide between 175-203 amino acids from the C-terminal region of human GZMB.
Clone:	RB19353
Isotype:	Ig Fraction
Purification:	This antibody is prepared by Saturated Ammonium Sulfate (SAS) precipitation followed by dialysis against PBS.

Target Details

Target:	GZMB
Alternative Name:	GZMB (GZMB Products)

Target Details

Background: Cytolytic T lymphocytes (CTL) and natural killer (NK) cells share the remarkable ability to recognize, bind, and lyse specific target cells. They are thought to protect their host by lysing cells bearing on their surface 'nonself' antigens, usually peptides or proteins resulting from infection by intracellular pathogens. The protein is crucial for the rapid induction of target cell apoptosis by CTL in cell-mediated immune response.

Molecular Weight: 27716

Gene ID: 3002

NCBI Accession: [NP_004122](#)

UniProt: [P10144](#)

Pathways: [Apoptosis, Caspase Cascade in Apoptosis](#)

Application Details

Application Notes: WB: 1:1000. WB: 1:1000. IHC-P: 1:50~100. FC: 1:10~50

Restrictions: For Research Use only

Handling

Format: Liquid

Buffer: Purified polyclonal antibody supplied in PBS with 0.09 % (W/V) sodium azide.

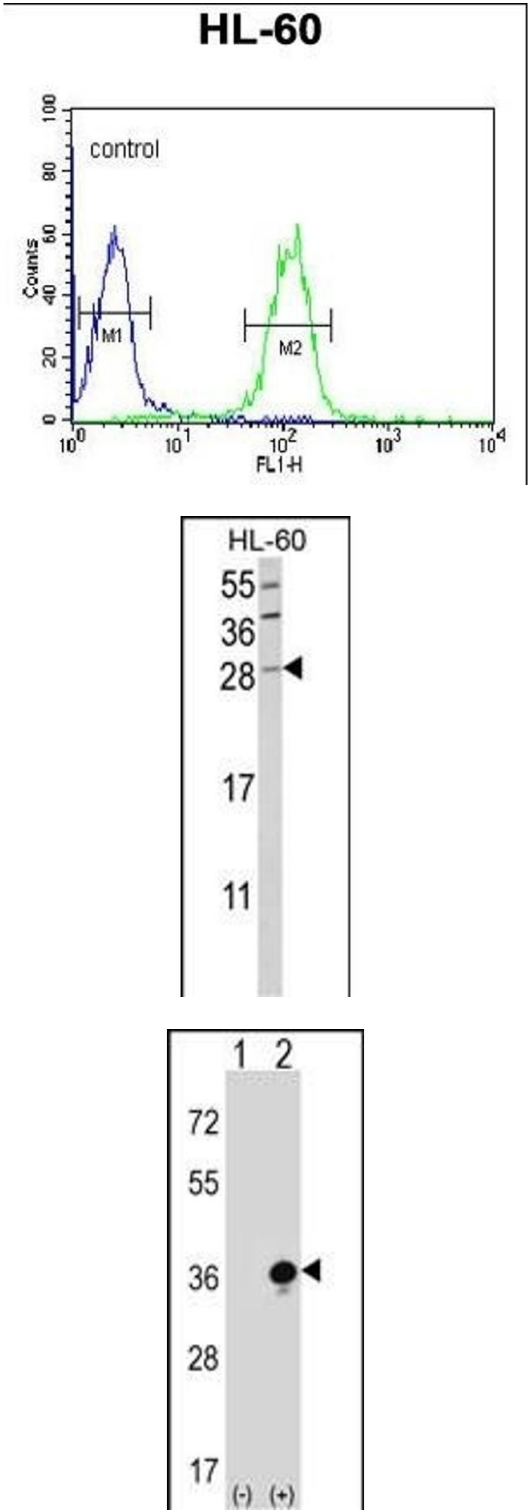
Preservative: Sodium azide

Precaution of Use: This product contains Sodium azide: a POISONOUS AND HAZARDOUS SUBSTANCE which should be handled by trained staff only.

Storage: 4 °C, -20 °C

Storage Comment: Maintain refrigerated at 2-8 °C for up to 6 months. For long term storage store at -20 °C in small aliquots to prevent freeze-thaw cycles.

Expiry Date: 6 months



Flow Cytometry

Image 1. GZMB Antibody (C-term) (ABIN390496 and ABIN2840855) flow cytometric analysis of HL-60 cells (right histogram) compared to a negative control cell (left histogram). FITC-conjugated goat-anti-rabbit secondary antibodies were used for the analysis.

Western Blotting

Image 2. Western blot analysis of GZMB Antibody (C-term) (ABIN390496 and ABIN2840855) in HL-60 cell line lysates (35 µg/lane). GZMB (arrow) was detected using the purified Pab.

Western Blotting

Image 3. Western blot analysis of GZMB (arrow) using rabbit polyclonal GZMB Antibody (C-term) (ABIN390496 and ABIN2840855). 293 cell lysates (2 µg/lane) either nontransfected (Lane 1) or transiently transfected (Lane 2) with the GZMB gene.

Please check the [product details page](#) for more images. Overall 4 images are available for ABIN390496.