

Datasheet for ABIN390501  
**anti-Annexin V antibody (N-Term)**

## 4 Images

[Go to Product page](#)

## Overview

Quantity:	400 µL
Target:	Annexin V (ANXA5)
Binding Specificity:	AA 1-30, N-Term
Reactivity:	Human, Mouse
Host:	Rabbit
Clonality:	Polyclonal
Conjugate:	This Annexin V antibody is un-conjugated
Application:	Western Blotting (WB), Immunohistochemistry (Paraffin-embedded Sections) (IHC (p)), Flow Cytometry (FACS)

## Product Details

Immunogen:	This Annexin V antibody is generated from rabbits immunized with a KLH conjugated synthetic peptide between 1-30 amino acids from the N-terminal region of human Annexin V.
Clone:	RB19461
Isotype:	Ig Fraction
Predicted Reactivity:	B, Pr
Purification:	This antibody is purified through a protein A column, followed by peptide affinity purification.

## Target Details

Target:	Annexin V (ANXA5)
---------	-------------------

## Target Details

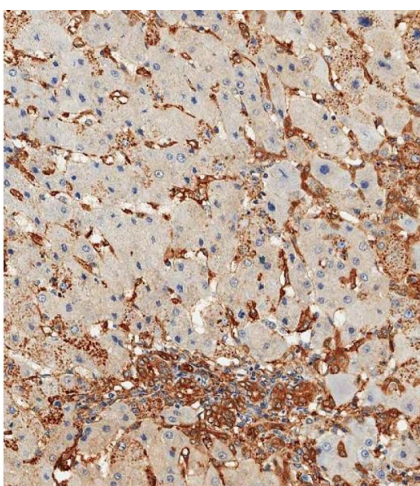
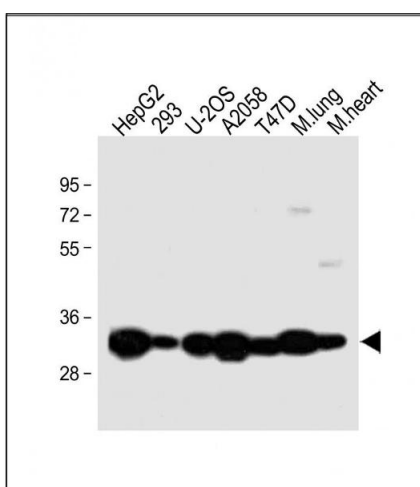
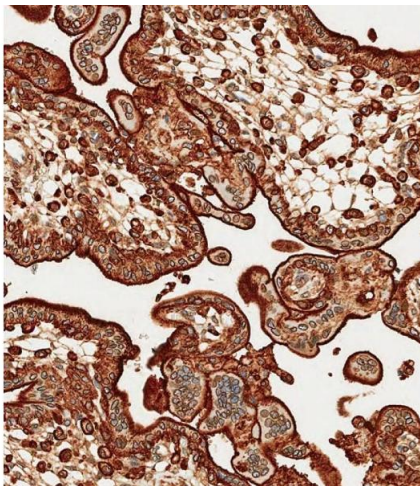
Alternative Name:	Annexin V ( <a href="#">ANXA5 Products</a> )
Background:	Annexin 5 belongs to the annexin family of calcium-dependent phospholipid binding proteins some of which have been implicated in membrane-related events along exocytotic and endocytotic pathways. Annexin 5 is a phospholipase A2 and protein kinase C inhibitory protein with calcium channel activity and a potential role in cellular signal transduction, inflammation, growth and differentiation. Annexin 5 has also been described as placental anticoagulant protein I, vascular anticoagulant-alpha, endonexin II, lipocortin V, placental protein 4 and anchorin CII.
Molecular Weight:	35937
Gene ID:	308
NCBI Accession:	<a href="#">NP_001145</a>
UniProt:	<a href="#">P08758</a>
Pathways:	<a href="#">Apoptosis</a>

## Application Details

Application Notes:	WB: 1:2000. IHC-P-Leica: 1:500. IHC-P-Leica: 1:500. FC: 1:10~50
Restrictions:	For Research Use only

## Handling

Format:	Liquid
Buffer:	Purified polyclonal antibody supplied in PBS with 0.09 % (W/V) sodium azide.
Preservative:	Sodium azide
Precaution of Use:	This product contains Sodium azide: a POISONOUS AND HAZARDOUS SUBSTANCE which should be handled by trained staff only.
Storage:	4 °C, -20 °C
Storage Comment:	Maintain refrigerated at 2-8 °C for up to 6 months. For long term storage store at -20 °C in small aliquots to prevent freeze-thaw cycles.
Expiry Date:	6 months



### Immunohistochemistry (Paraffin-embedded Sections)

**Image 1.** Immunohistochemical analysis of paraffin-embedded Human placenta tissue using A performed on the Leica® BOND RXm. Tissue was fixed with formaldehyde at room temperature, antigen retrieval was by heat mediation with a EDTA buffer (pH 9.0). Samples were incubated with primary Antibody (1:500) for 1 hours at room temperature. A undiluted biotinylated CRF Anti-Polyvalent HRP Polymer antibody was used as the secondary antibody.

### Western Blotting

**Image 2.** All lanes : Anti-Annexin V Antibody (N-term) at 1:2000 dilution Lane 1: HepG2 whole cell lysate Lane 2: 293 whole cell lysate Lane 3: U-2OS whole cell lysate Lane 4: whole cell lysate Lane 5: T47D whole cell lysate Lane 6: Mouse lung lysate Lane 7: Mouse heart lysate Lysates/proteins at 20 µg per lane. Secondary Goat Anti-Rabbit IgG, (H+L), Peroxidase conjugated at 1/10000 dilution. Predicted band size : 36 kDa Blocking/Dilution buffer: 5 % NFDM/TBST.

### Immunohistochemistry (Paraffin-embedded Sections)

**Image 3.** Immunohistochemical analysis of paraffin-embedded Human hepatocarcinoma tissue using A performed on the Leica® BOND RXm. Tissue was fixed with formaldehyde at room temperature, antigen retrieval was by heat mediation with a EDTA buffer (pH 9.0). Samples were incubated with primary Antibody (1:500) for 1 hours at room temperature. A undiluted biotinylated CRF Anti-Polyvalent HRP Polymer antibody was used as the secondary antibody.

Please check the [product details page](#) for more images. Overall 4 images are available for ABIN390501.