

Datasheet for ABIN390505

**anti-CTNNA1 antibody (N-Term)****3** Images[Go to Product page](#)

## Overview

Quantity:	400 µL
Target:	CTNNA1
Binding Specificity:	AA 30-59, N-Term
Reactivity:	Human, Mouse
Host:	Rabbit
Clonality:	Polyclonal
Conjugate:	This CTNNA1 antibody is un-conjugated
Application:	Western Blotting (WB), Flow Cytometry (FACS), Immunohistochemistry (Paraffin-embedded Sections) (IHC (p))

## Product Details

Immunogen:	This CTNA1 antibody is generated from rabbits immunized with a KLH conjugated synthetic peptide between 30-59 amino acids from the N-terminal region of human CTNA1.
Clone:	RB19486
Isotype:	Ig Fraction
Predicted Reactivity:	B, Rb
Purification:	This antibody is prepared by Saturated Ammonium Sulfate (SAS) precipitation followed by dialysis against PBS.

## Target Details

Target:	CTNNA1
---------	--------

## Target Details

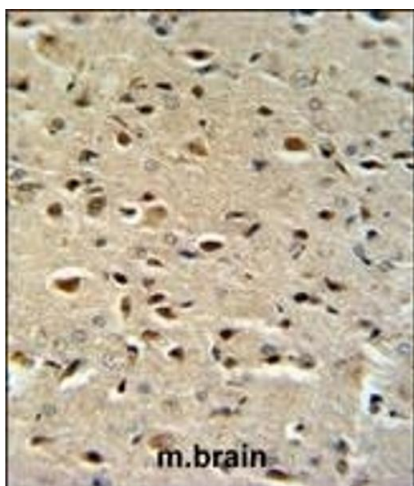
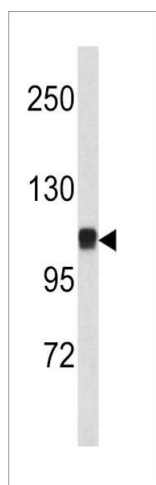
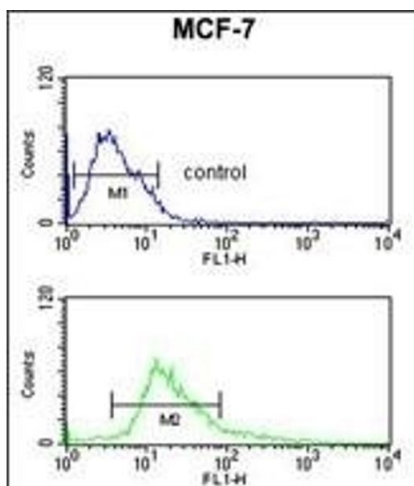
Alternative Name:	CTNA1 ( <a href="#">CTNNA1 Products</a> )
Background:	CTNA1 associates with the cytoplasmic domain of a variety of cadherins. The association of catenins to cadherins produces a complex which is linked to the actin filament network, and which seems to be of primary importance for cadherins cell-adhesion properties. The protein may play a crucial role in cell differentiation.
Molecular Weight:	100071
Gene ID:	1495
NCBI Accession:	<a href="#">NP_001894</a>
UniProt:	<a href="#">P35221</a>
Pathways:	<a href="#">Regulation of Muscle Cell Differentiation</a> , <a href="#">Cell-Cell Junction Organization</a> , <a href="#">Maintenance of Protein Location</a>

## Application Details

Application Notes:	WB: 1:1000. IHC-P: 1:50~100. FC: 1:10~50
Restrictions:	For Research Use only

## Handling

Format:	Liquid
Buffer:	Purified polyclonal antibody supplied in PBS with 0.09 % (W/V) sodium azide.
Preservative:	Sodium azide
Precaution of Use:	This product contains Sodium azide: a POISONOUS AND HAZARDOUS SUBSTANCE which should be handled by trained staff only.
Storage:	4 °C,-20 °C
Storage Comment:	Maintain refrigerated at 2-8 °C for up to 6 months. For long term storage store at -20 °C in small aliquots to prevent freeze-thaw cycles.
Expiry Date:	6 months



### Flow Cytometry

**Image 1.** CTNA1 Antibody (N-term) (ABIN390505 and ABIN2840861) flow cytometric analysis of MCF-7 cells (bottom histogram) compared to a negative control cell (top histogram). FITC-conjugated goat-anti-rabbit secondary antibodies were used for the analysis.

### Western Blotting

**Image 2.** Western blot analysis of CTNA1 antibody (N-term) (ABIN390505 and ABIN2840861) in mouse bladder tissue lysates (35 µg/lane). CTNA1 (arrow) was detected using the purified Pab.

### Immunohistochemistry (Paraffin-embedded Sections)

**Image 3.** CTNA1 Antibody (N-term) (ABIN390505 and ABIN2840861) IHC analysis in formalin fixed and paraffin embedded mouse brain tissue followed by peroxidase conjugation of the secondary antibody and DAB staining. This data demonstrates the use of the CTNA1 Antibody (N-term) for immunohistochemistry. Clinical relevance has not been evaluated.