

Datasheet for ABIN390509

anti-Annexin a1 antibody (AA 129-158)**3** Images**1** Publication[Go to Product page](#)

Overview

Quantity:	400 µL
Target:	Annexin a1 (ANXA1)
Binding Specificity:	AA 129-158
Reactivity:	Human
Host:	Rabbit
Clonality:	Polyclonal
Conjugate:	This Annexin a1 antibody is un-conjugated
Application:	Western Blotting (WB), Immunohistochemistry (Paraffin-embedded Sections) (IHC (p)), Flow Cytometry (FACS)

Product Details

Immunogen:	This Annexin A1 antibody is generated from rabbits immunized with a KLH conjugated synthetic peptide between 129-158 amino acids from the Central region of human Annexin A1.
Clone:	RB19534
Isotype:	Ig Fraction
Purification:	This antibody is prepared by Saturated Ammonium Sulfate (SAS) precipitation followed by dialysis against PBS.

Target Details

Target:	Annexin a1 (ANXA1)
Alternative Name:	Annexin A1 (ANXA1 Products)

Target Details

Background:	Annexin I belongs to a family of Ca(2+)-dependent phospholipid binding proteins which have a molecular weight of approximately 35,000 to 40,000 and are preferentially located on the cytosolic face of the plasma membrane. Annexin I protein has an apparent relative molecular mass of 40 kDa, with phospholipase A2 inhibitory activity. Since phospholipase A2 is required for the biosynthesis of the potent mediators of inflammation, prostaglandins and leukotrienes, annexin I may have potential anti-inflammatory activity.
Molecular Weight:	38714
Gene ID:	301
NCBI Accession:	NP_000691
UniProt:	P04083
Pathways:	Hormone Transport

Application Details

Application Notes:	WB: 1:1000. IHC-P: 1:50~100. FC: 1:10~50
Restrictions:	For Research Use only

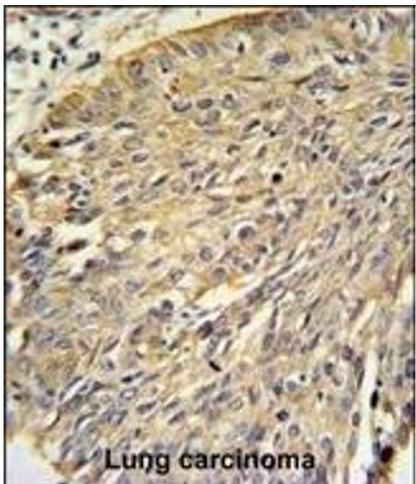
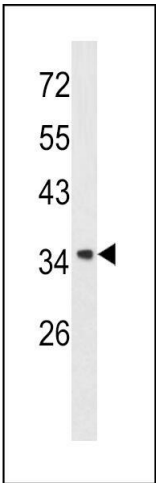
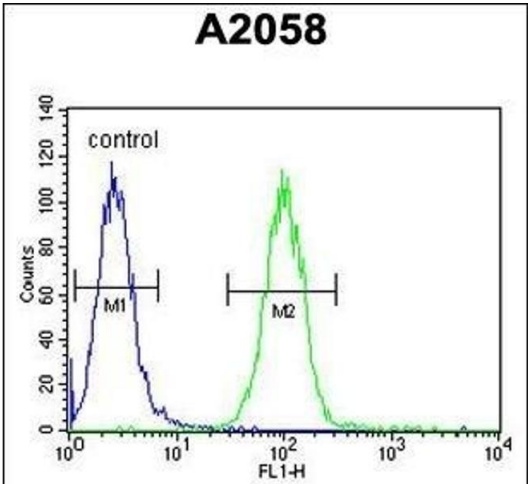
Handling

Format:	Liquid
Buffer:	Purified polyclonal antibody supplied in PBS with 0.09 % (W/V) sodium azide.
Preservative:	Sodium azide
Precaution of Use:	This product contains Sodium azide: a POISONOUS AND HAZARDOUS SUBSTANCE which should be handled by trained staff only.
Storage:	4 °C,-20 °C
Storage Comment:	Maintain refrigerated at 2-8 °C for up to 6 months. For long term storage store at -20 °C in small aliquots to prevent freeze-thaw cycles.
Expiry Date:	6 months

Publications

Product cited in:	Xu, Han, Epstein, Liu: "Regulation of PDK mRNA by high fatty acid and glucose in pancreatic islets." in: Biochemical and biophysical research communications , Vol. 344, Issue 3, pp. 827-
-------------------	---

Images



Flow Cytometry

Image 1. Annexin A1 Antibody (Center) (ABIN390509 and ABIN2840863) flow cytometric analysis of cells (right histogram) compared to a negative control cell (left histogram). FITC-conjugated goat-anti-rabbit secondary antibodies were used for the analysis.

Western Blotting

Image 2. Western blot analysis of Annexin A1 antibody (Center) (ABIN390509 and ABIN2840863) in cell line lysates (35 µg/lane). Annexin A1 (arrow) was detected using the purified Pab.

Immunohistochemistry (Paraffin-embedded Sections)

Image 3. Annexin A1 Antibody (Center) (ABIN390509 and ABIN2840863) IHC analysis in formalin fixed and paraffin embedded human lung carcinoma followed by peroxidase conjugation of the secondary antibody and DAB staining. This data demonstrates the use of the Annexin A1 Antibody (Center) for immunohistochemistry. Clinical relevance has not been evaluated.