

Datasheet for ABIN390510  
**anti-c-FOS antibody (C-Term)**



[Go to Product page](#)

2 Images

## Overview

Quantity:	400 µL
Target:	c-FOS (c-Fos)
Binding Specificity:	AA 263-291, C-Term
Reactivity:	Human
Host:	Rabbit
Clonality:	Polyclonal
Conjugate:	This c-FOS antibody is un-conjugated
Application:	Western Blotting (WB), Flow Cytometry (FACS)

## Product Details

Immunogen:	This c-fos antibody is generated from rabbits immunized with a KLH conjugated synthetic peptide between 263-291 amino acids from the C-terminal region of human c-fos.
Clone:	RB19537
Isotype:	Ig Fraction
Predicted Reactivity:	B, Rat
Purification:	This antibody is prepared by Saturated Ammonium Sulfate (SAS) precipitation followed by dialysis against PBS.

## Target Details

Target:	c-FOS (c-Fos)
---------	---------------

## Target Details

---

Alternative Name:	c-fos ( <a href="#">c-Fos Products</a> )
Background:	The Fos family consists of 4 members: FOS, FOSB, FOSL1, and FOSL2. These leucine zipper proteins can dimerize with proteins of the JUN family, thereby forming the transcription factor complex AP-1. As such, the FOS proteins have been implicated as regulators of cell proliferation, differentiation, and transformation. In some cases, expression of the FOS gene has also been associated with apoptotic cell death.
Molecular Weight:	40695
Gene ID:	2353
NCBI Accession:	<a href="#">NP_005243</a>
UniProt:	<a href="#">P01100</a>
Pathways:	<a href="#">S100 Proteins</a>

## Application Details

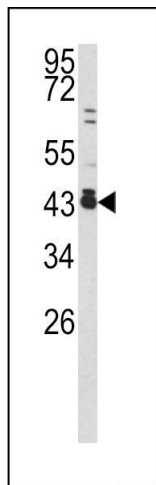
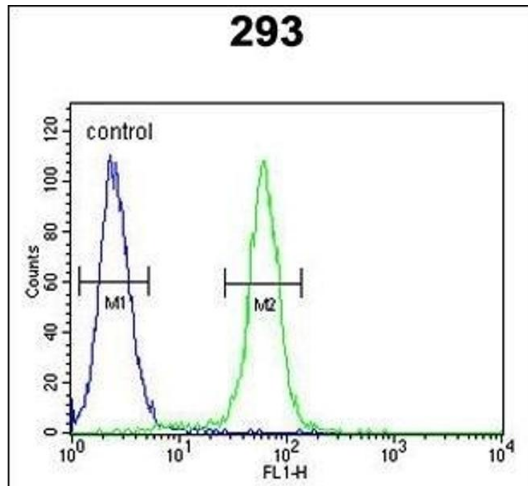
---

Application Notes:	WB: 1:1000. FC: 1:10~50
Restrictions:	For Research Use only

## Handling

---

Format:	Liquid
Buffer:	Purified polyclonal antibody supplied in PBS with 0.09 % (W/V) sodium azide.
Preservative:	Sodium azide
Precaution of Use:	This product contains Sodium azide: a POISONOUS AND HAZARDOUS SUBSTANCE which should be handled by trained staff only.
Storage:	4 °C,-20 °C
Storage Comment:	Maintain refrigerated at 2-8 °C for up to 6 months. For long term storage store at -20 °C in small aliquots to prevent freeze-thaw cycles.
Expiry Date:	6 months



### Flow Cytometry

**Image 1.** c-fos Antibody (C-term) (ABIN390510 and ABIN2840864) flow cytometric analysis of 293 cells (right histogram) compared to a negative control cell (left histogram). FITC-conjugated goat-anti-rabbit secondary antibodies were used for the analysis.

### Western Blotting

**Image 2.** Western blot analysis of c-fos antibody (C-term) (ABIN390510 and ABIN2840864) in 293 cell line lysates (35 µg/lane). c-fos (arrow) was detected using the purified Pab.