

Datasheet for ABIN390513
anti-COL6A1 antibody (C-Term)

5 Images

[Go to Product page](#)

Overview

Quantity:	400 µL
Target:	COL6A1
Binding Specificity:	AA 831-858, C-Term
Reactivity:	Human
Host:	Rabbit
Clonality:	Polyclonal
Conjugate:	This COL6A1 antibody is un-conjugated
Application:	Western Blotting (WB), Immunohistochemistry (Paraffin-embedded Sections) (IHC (p)), Immunofluorescence (IF), Flow Cytometry (FACS)

Product Details

Immunogen:	This COL6A1 antibody is generated from rabbits immunized with a KLH conjugated synthetic peptide between 831-858 amino acids from the C-terminal region of human COL6A1.
Clone:	RB19577
Isotype:	Ig Fraction
Purification:	This antibody is prepared by Saturated Ammonium Sulfate (SAS) precipitation followed by dialysis against PBS.

Target Details

Target:	COL6A1
Alternative Name:	COL6A1 (COL6A1 Products)

Target Details

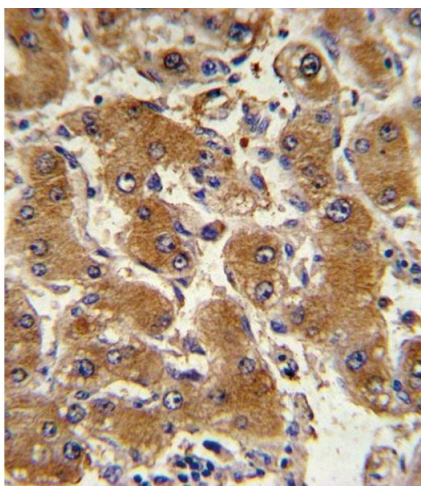
Background:	The collagens are a superfamily of proteins that play a role in maintaining the integrity of various tissues. Collagens are extracellular matrix proteins and have a triple-helical domain as their common structural element. Collagen VI is a major structural component of microfibrils. The basic structural unit of collagen VI is a heterotrimer of the alpha1(VI), alpha2(VI), and alpha3(VI) chains. The protein COL6A1 is the alpha 1 subunit of type VI collagen (alpha1(VI) chain). Mutations in the genes that code for the collagen VI subunits result in the autosomal dominant disorder, Bethlem myopathy.
Molecular Weight:	108529
Gene ID:	1291
NCBI Accession:	NP_001839
UniProt:	P12109
Pathways:	Growth Factor Binding , SARS-CoV-2 Protein Interactome

Application Details

Application Notes:	IF: 1:10~50. WB: 1:1000. WB: 1:500-1:1000. IHC-P: 1:10~50. FC: 1:10~50
Restrictions:	For Research Use only

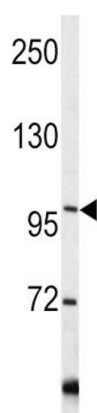
Handling

Format:	Liquid
Buffer:	Purified polyclonal antibody supplied in PBS with 0.09 % (W/V) sodium azide.
Preservative:	Sodium azide
Precaution of Use:	This product contains Sodium azide: a POISONOUS AND HAZARDOUS SUBSTANCE which should be handled by trained staff only.
Storage:	4 °C,-20 °C
Storage Comment:	Maintain refrigerated at 2-8 °C for up to 6 months. For long term storage store at -20 °C in small aliquots to prevent freeze-thaw cycles.
Expiry Date:	6 months



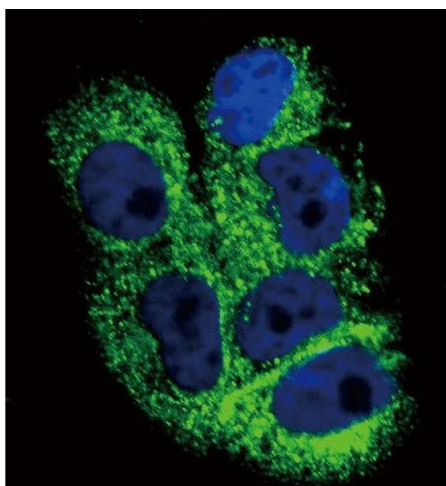
Immunohistochemistry (Paraffin-embedded Sections)

Image 1. Formalin-fixed and paraffin-embedded human hepatocarcinoma with COL6A1 Antibody (C-term), which was peroxidase-conjugated to the secondary antibody, followed by DAB staining. This data demonstrates the use of this antibody for immunohistochemistry, clinical relevance has not been evaluated.



Western Blotting

Image 2. Western blot analysis of COL6A1 antibody (C-term) (ABIN390513 and ABIN2840867) in Y79 cell line lysates (35 µg/lane). COL6A1 (arrow) was detected using the purified Pab.



Immunofluorescence

Image 3. Confocal immunofluorescent analysis of COL6A1 Antibody (C-term) (ABIN390513 and ABIN2840867) with cell followed by Alexa Fluor 488-conjugated goat anti-rabbit IgG (green). DAPI was used to stain the cell nuclear (blue).

Please check the [product details page](#) for more images. Overall 5 images are available for ABIN390513.