

Datasheet for ABIN390515  
**anti-KLF6 antibody (C-Term)**[Go to Product page](#)

4 Images

1 Publication

## Overview

Quantity:	400 µL
Target:	KLF6
Binding Specificity:	AA 159-186, C-Term
Reactivity:	Human, Mouse
Host:	Rabbit
Clonality:	Polyclonal
Conjugate:	This KLF6 antibody is un-conjugated
Application:	Western Blotting (WB), Flow Cytometry (FACS), Immunofluorescence (IF), Immunohistochemistry (Paraffin-embedded Sections) (IHC (p))

## Product Details

Immunogen:	This KLF6 antibody is generated from rabbits immunized with a KLH conjugated synthetic peptide between 159-186 amino acids from the C-terminal region of human KLF6.
Clone:	RB20012
Isotype:	Ig Fraction
Purification:	This antibody is prepared by Saturated Ammonium Sulfate (SAS) precipitation followed by dialysis against PBS.

## Target Details

Target:	KLF6
Alternative Name:	KLF6 ( <a href="#">KLF6 Products</a> )

## Target Details

Background:	COPEB is a member of the Kruppel-like family of transcription factors. The zinc finger protein is a transcriptional activator, and functions as a tumor suppressor.
Molecular Weight:	31865
Gene ID:	1316
NCBI Accession:	<a href="#">NP_001153596</a> , <a href="#">NP_001153597</a> , <a href="#">NP_001291</a>
UniProt:	<a href="#">Q99612</a>

## Application Details

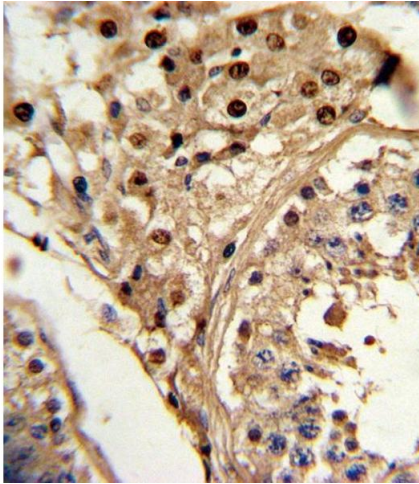
Application Notes:	IF: 1:10~50. WB: 1:1000. IHC-P: 1:10~50. FC: 1:10~50
Restrictions:	For Research Use only

## Handling

Format:	Liquid
Buffer:	Purified polyclonal antibody supplied in PBS with 0.09 % (W/V) sodium azide.
Preservative:	Sodium azide
Precaution of Use:	This product contains Sodium azide: a POISONOUS AND HAZARDOUS SUBSTANCE which should be handled by trained staff only.
Storage:	4 °C,-20 °C
Storage Comment:	Maintain refrigerated at 2-8 °C for up to 6 months. For long term storage store at -20 °C in small aliquots to prevent freeze-thaw cycles.
Expiry Date:	6 months

## Publications

Product cited in:	Sharma, Åkerström, Sharma, Chow, Teow, Abrenica, Booth, Booth, Mirazimi, Lal: "SARS-CoV 9b protein diffuses into nucleus, undergoes active Crm1 mediated nucleocytoplasmic export and triggers apoptosis when retained in the nucleus." in: <b>PLoS ONE</b> , Vol. 6, Issue 5, pp. e19436, (2011) ( <a href="#">PubMed</a> ).
-------------------	---



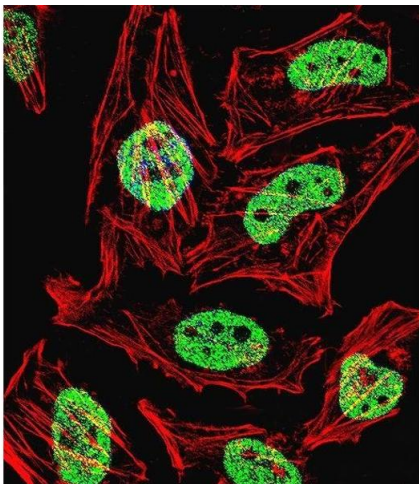
#### Immunohistochemistry (Paraffin-embedded Sections)

**Image 1.** Formalin-fixed and paraffin-embedded human testis tissue reacted with KLF6 Antibody (C-term), which was peroxidase-conjugated to the secondary antibody, followed by DAB staining. This data demonstrates the use of this antibody for immunohistochemistry, clinical relevance has not been evaluated.



#### Western Blotting

**Image 2.** Western blot analysis of KLF6 Antibody (C-term) (ABIN390515 and ABIN2840868) in mouse stomach tissue lysates (35 µg/lane). KLF6 (arrow) was detected using the purified Pab.



#### Immunofluorescence

**Image 3.** Fluorescent confocal image of HeLa cell stained with KLF6 Antibody (C-term) (ABIN390515 and ABIN2840868). HeLa cells were fixed with 4 % PFA (20 min), permeabilized with Triton X-100 (0.1 %, 10 min), then incubated with KLF6 primary antibody (1:25, 1 h at 37 °C). For secondary antibody, Alexa Fluor® 488 conjugated donkey anti-rabbit antibody (green) was used (1:400, 50 min at 37 °C). Cytoplasmic actin was counterstained with Alexa Fluor® 555 (red) conjugated Phalloidin (7 units/mL, 1 h at 37 °C). Nuclei were counterstained with DAPI (blue) (10 µg/mL, 10 min). KLF6 immunoreactivity is localized to Nucleus significantly.

Please check the [product details page](#) for more images. Overall 4 images are available for ABIN390515.