

Datasheet for ABIN390516
anti-KLF6 antibody (N-Term)[Go to Product page](#)

2 Images

Overview

Quantity:	400 µL
Target:	KLF6
Binding Specificity:	AA 56-82, N-Term
Reactivity:	Human
Host:	Rabbit
Clonality:	Polyclonal
Conjugate:	This KLF6 antibody is un-conjugated
Application:	Western Blotting (WB), Flow Cytometry (FACS)

Product Details

Immunogen:	This KLF6 antibody is generated from rabbits immunized with a KLH conjugated synthetic peptide between 56-82 amino acids from the N-terminal region of human KLF6.
Clone:	RB19945
Isotype:	Ig Fraction
Predicted Reactivity:	M
Purification:	This antibody is prepared by Saturated Ammonium Sulfate (SAS) precipitation followed by dialysis against PBS.

Target Details

Target:	KLF6
---------	------

Target Details

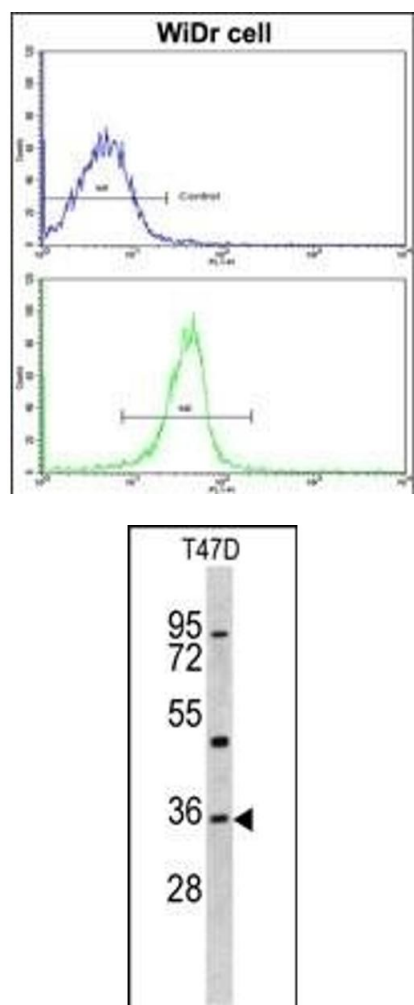
Alternative Name:	KLF6 (KLF6 Products)
Background:	COPEB is a member of the Kruppel-like family of transcription factors. The zinc finger protein is a transcriptional activator, and functions as a tumor suppressor.
Molecular Weight:	31865
Gene ID:	1316
NCBI Accession:	NP_001153596 , NP_001153597 , NP_001291
UniProt:	Q99612

Application Details

Application Notes:	WB: 1:1000. FC: 1:10~50
Restrictions:	For Research Use only

Handling

Format:	Liquid
Buffer:	Purified polyclonal antibody supplied in PBS with 0.09 % (W/V) sodium azide.
Preservative:	Sodium azide
Precaution of Use:	This product contains Sodium azide: a POISONOUS AND HAZARDOUS SUBSTANCE which should be handled by trained staff only.
Storage:	4 °C,-20 °C
Storage Comment:	Maintain refrigerated at 2-8 °C for up to 6 months. For long term storage store at -20 °C in small aliquots to prevent freeze-thaw cycles.
Expiry Date:	6 months



Flow Cytometry

Image 1. Flow cytometric analysis of widr cells using KLF6 Antibody (N-term)(bottom histogram) compared to a negative control cell (top histogram). FITC-conjugated goat-anti-rabbit secondary antibodies were used for the analysis.

Western Blotting

Image 2. Western blot analysis of KLF6 antibody (N-term) (ABIN390516 and ABIN2840869) in T47D cell line lysates (35 µg/lane). KLF6 (arrow) was detected using the purified Pab.