

Datasheet for ABIN390517
anti-CREB3L1 antibody (C-Term)

4 Images

[Go to Product page](#)

Overview

Quantity:	400 µL
Target:	CREB3L1
Binding Specificity:	AA 481-509, C-Term
Reactivity:	Human, Mouse
Host:	Rabbit
Clonality:	Polyclonal
Conjugate:	This CREB3L1 antibody is un-conjugated
Application:	Western Blotting (WB), Immunohistochemistry (Paraffin-embedded Sections) (IHC (p)), Flow Cytometry (FACS)

Product Details

Immunogen:	This CREB3L1 antibody is generated from rabbits immunized with a KLH conjugated synthetic peptide between 481-509 amino acids from the C-terminal region of human CREB3L1.
Clone:	RB19585
Isotype:	Ig Fraction
Purification:	This antibody is prepared by Saturated Ammonium Sulfate (SAS) precipitation followed by dialysis against PBS.

Target Details

Target:	CREB3L1
Alternative Name:	CREB3L1 (CREB3L1 Products)

Target Details

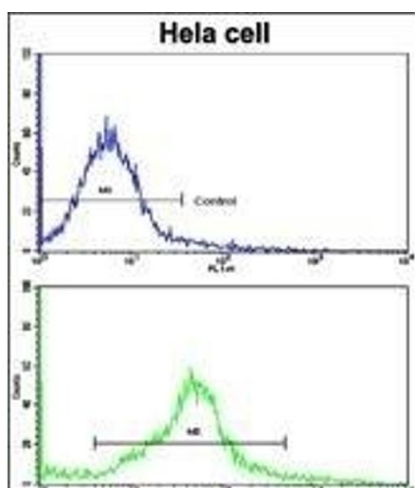
Background:	CREB3L1 is a transcription factor that acts during endoplasmic reticulum stress by activating unfolded protein response target genes. It is specifically involved in ER-stress response in astrocytes in the central nervous system (By similarity). It may play a role in gliosis. In vitro, it binds to box-B element, cAMP response element (CRE) and CRE-like sequences, and activates transcription through box-B element but not through CRE.
Molecular Weight:	57005
Gene ID:	90993
NCBI Accession:	NP_443086
UniProt:	Q96BA8
Pathways:	Thyroid Hormone Synthesis , Chromatin Binding

Application Details

Application Notes:	WB: 1:1000. WB: 1:8000. IHC-P: 1:50~100. FC: 1:10~50
Restrictions:	For Research Use only

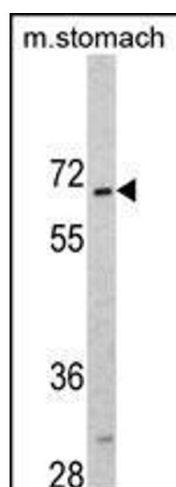
Handling

Format:	Liquid
Buffer:	Purified polyclonal antibody supplied in PBS with 0.09 % (W/V) sodium azide.
Preservative:	Sodium azide
Precaution of Use:	This product contains Sodium azide: a POISONOUS AND HAZARDOUS SUBSTANCE which should be handled by trained staff only.
Storage:	4 °C, -20 °C
Storage Comment:	Maintain refrigerated at 2-8 °C for up to 6 months. For long term storage store at -20 °C in small aliquots to prevent freeze-thaw cycles.
Expiry Date:	6 months



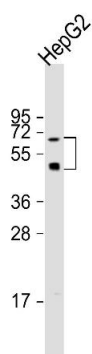
Flow Cytometry

Image 1. Flow cytometric analysis of hela cells using CREB3L1 Antibody (C-term)(bottom histogram) compared to a negative control cell (top histogram). FITC-conjugated goat-anti-rabbit secondary antibodies were used for the analysis.



Western Blotting

Image 2. Western blot analysis of CREB3L1 Antibody (C-term) (ABIN390517 and ABIN2840870) in mouse stomach tissue lysates (35 µg/lane). CREB3L1 (arrow) was detected using the purified Pab.



Western Blotting

Image 3. Anti-CREB3L1 Antibody (C-term) at 1:8000 dilution + HepG2 whole cell lysate Lysates/proteins at 20 µg per lane. Secondary Goat Anti-Rabbit IgG, (H+L), Peroxidase conjugated at 1/10000 dilution. Predicted band size : 57 kDa Blocking/Dilution buffer: 5 % NFDM/TBST.

Please check the [product details page](#) for more images. Overall 4 images are available for ABIN390517.