



[Go to Product page](#)

Datasheet for ABIN390520

## anti-EEF1A2 antibody (AA 46-72)

4 Images

4 Publications

### Overview

Quantity:	400 µL
Target:	EEF1A2
Binding Specificity:	AA 46-72
Reactivity:	Human
Host:	Rabbit
Clonality:	Polyclonal
Conjugate:	This EEF1A2 antibody is un-conjugated
Application:	Western Blotting (WB), Immunohistochemistry (Paraffin-embedded Sections) (IHC (p)), Flow Cytometry (FACS)

### Product Details

Immunogen:	This EEF1A1 antibody is generated from rabbits immunized with a KLH conjugated synthetic peptide between 46-72 amino acids of human EEF1A1.
Clone:	RB19607
Isotype:	Ig Fraction
Predicted Reactivity:	X, B, Ha, D, Hs, M, Rb, Rat, E, C, Zf, Y
Purification:	This antibody is prepared by Saturated Ammonium Sulfate (SAS) precipitation followed by dialysis against PBS.

### Target Details

Target:	EEF1A2
---------	--------

## Target Details

---

Alternative Name:	EEF1A1/ EEF1A2 ( <a href="#">EEF1A2 Products</a> )
Background:	EEF1A1 is an isoform of the alpha subunit of the elongation factor-1 complex, which is responsible for the enzymatic delivery of aminoacyl tRNAs to the ribosome. This isoform (alpha 1) is expressed in brain, placenta, lung, liver, kidney, and pancreas, and the other isoform (alpha 2) is expressed in brain, heart and skeletal muscle. This isoform is identified as an autoantigen in 66 % of patients with Felty syndrome.
Molecular Weight:	50141
Gene ID:	1915
NCBI Accession:	<a href="#">NP_001393</a>
UniProt:	<a href="#">P68104</a>

## Application Details

---

Application Notes:	WB: 1:1000. WB: 1:1000. IHC-P: 1:50~100. FC: 1:10~50
Restrictions:	For Research Use only

## Handling

---

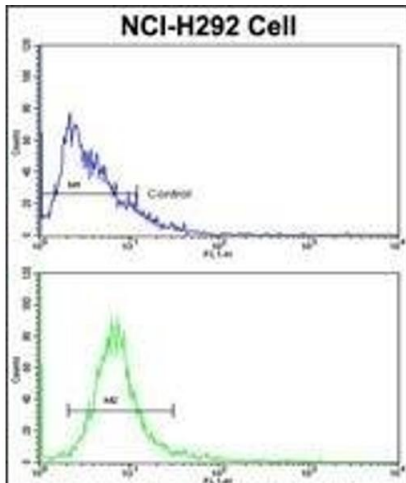
Format:	Liquid
Buffer:	Purified polyclonal antibody supplied in PBS with 0.09 % (W/V) sodium azide.
Preservative:	Sodium azide
Precaution of Use:	This product contains Sodium azide: a POISONOUS AND HAZARDOUS SUBSTANCE which should be handled by trained staff only.
Storage:	4 °C,-20 °C
Storage Comment:	Maintain refrigerated at 2-8 °C for up to 6 months. For long term storage store at -20 °C in small aliquots to prevent freeze-thaw cycles.
Expiry Date:	6 months

## Publications

---

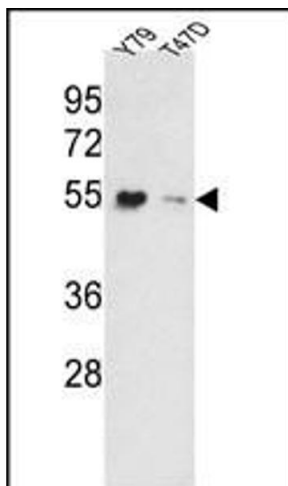
Product cited in:	Bannon, Johnson, Michelhaugh, Hartley, Halter, David, Kapatos, Schmidt: "A molecular profile of cocaine abuse includes the differential expression of genes that regulate transcription, chromatin, and dopamine cell phenotype." in: <b>Neuropsychopharmacology : official publication</b>
-------------------	---------------------------------------------------------------------------------------------------------------------------------------------------------------------------------------------------------------------------------------------------------------------------------------------

Images



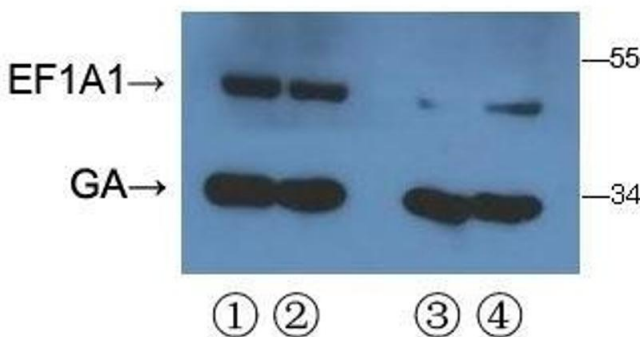
Flow Cytometry

**Image 1.** Flow cytometric analysis of NCI- cells using EEF1A1/ EEF1A2 Antibody (N-term)(bottom histogram) compared to a negative control cell (top histogram). FITC-conjugated goat-anti-rabbit secondary antibodies were used for the analysis.



Western Blotting

**Image 2.** Western blot analysis of EEF1A1/ EEF1A2 Antibody (N-term) (ABIN390520 and ABIN2840872) in Y79, T47D cell line lysates (35 µg/lane). EEF1A1/ EEF1A2 (arrow) was detected using the purified Pab.



- ① 10% FBS cultured until harvested
- ② 0.1%FBS cultured until harvested

Western Blotting

**Image 3.** With 293T cell line lysate,resolved proteins were electrophoretically transferred to PVDF membrane and incubated sequentially with primary antibody EEF1A1/ EEF1A2 ( abgent, Cat. (ABIN390520 and ABIN2840872), 1:500, 4 °C,overnight ) and horseradish peroxidase-conjugated second antibo dy(rabbit). After washing, the bound antibody complex was detected using an ECL chemiluminescence reagent and XAR film (Kodak).

Please check the [product details page](#) for more images. Overall 4 images are available for ABIN390520.