



[Go to Product page](#)

Datasheet for ABIN390521

## anti-eEF1A1 antibody (C-Term)

### 4 Images

#### Overview

Quantity:	400 µL
Target:	eEF1A1 (EEF1A1)
Binding Specificity:	AA 361-389, C-Term
Reactivity:	Human
Host:	Rabbit
Clonality:	Polyclonal
Conjugate:	This eEF1A1 antibody is un-conjugated
Application:	Western Blotting (WB), Immunofluorescence (IF), Flow Cytometry (FACS), Immunohistochemistry (Paraffin-embedded Sections) (IHC (p))

#### Product Details

Immunogen:	This EEF1A1 antibody is generated from rabbits immunized with a KLH conjugated synthetic peptide between 361-389 amino acids from the C-terminal region of human EEF1A1.
Clone:	RB19608
Isotype:	Ig Fraction
Predicted Reactivity:	X, B, Ha, Hs, M, Rb, Rat, C, Zf
Purification:	This antibody is prepared by Saturated Ammonium Sulfate (SAS) precipitation followed by dialysis against PBS.

#### Target Details

Target:	eEF1A1 (EEF1A1)
---------	-----------------

## Target Details

---

Alternative Name:	EEF1A1 ( <a href="#">EEF1A1 Products</a> )
Background:	EEF1A1 is an isoform of the alpha subunit of the elongation factor-1 complex, which is responsible for the enzymatic delivery of aminoacyl tRNAs to the ribosome. This isoform (alpha 1) is expressed in brain, placenta, lung, liver, kidney, and pancreas, and the other isoform (alpha 2) is expressed in brain, heart and skeletal muscle. This isoform is identified as an autoantigen in 66 % of patients with Felty syndrome.
Molecular Weight:	50141
Gene ID:	1915
NCBI Accession:	<a href="#">NP_001393</a>
UniProt:	<a href="#">P68104</a>

## Application Details

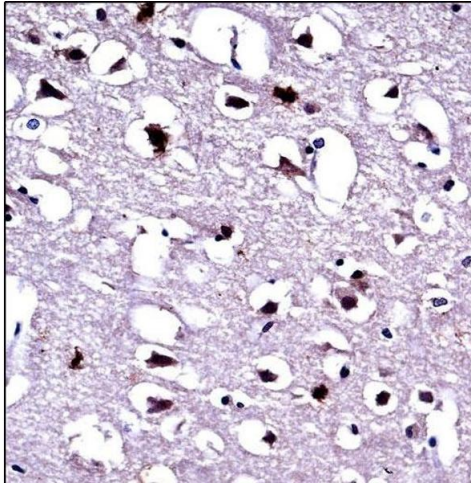
---

Application Notes:	IF: 1:10~50. WB: 1:1000. IHC-P: 1:10~50. FC: 1:10~50
Restrictions:	For Research Use only

## Handling

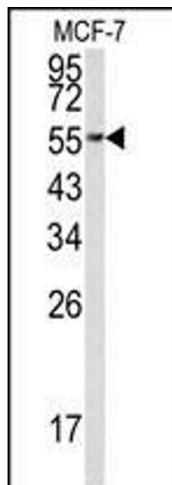
---

Format:	Liquid
Buffer:	Purified polyclonal antibody supplied in PBS with 0.09 % (W/V) sodium azide.
Preservative:	Sodium azide
Precaution of Use:	This product contains Sodium azide: a POISONOUS AND HAZARDOUS SUBSTANCE which should be handled by trained staff only.
Storage:	4 °C, -20 °C
Storage Comment:	Maintain refrigerated at 2-8 °C for up to 6 months. For long term storage store at -20 °C in small aliquots to prevent freeze-thaw cycles.
Expiry Date:	6 months



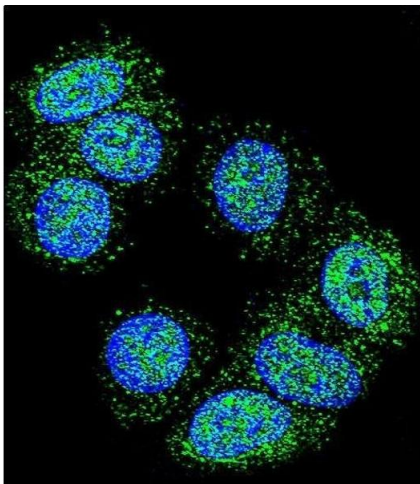
### Immunohistochemistry (Paraffin-embedded Sections)

**Image 1.** EEF1A1 Antibody (C-term) ((ABIN390521 and ABIN2840873))immunohistochemistry analysis in formalin fixed and paraffin embedded human brain tissue followed by peroxidase conjugation of the secondary antibody and DAB staining.This data demonstrates the use of EEF1A1 Antibody (C-term) for immunohistochemistry. Clinical relevance has not been evaluated.



### Western Blotting

**Image 2.** Western blot analysis of EEF1A1 Antibody (C-term) (ABIN390521 and ABIN2840873) in MCF-7 cell line lysates (35 µg/lane). EEF1A1 (arrow) was detected using the purified Pab.



### Immunofluorescence

**Image 3.** Confocal immunofluorescent analysis of EEF1A1 Antibody (C-term) (ABIN390521 and ABIN2840873) with MCF-7 cell followed by Alexa Fluor 488-conjugated goat anti-rabbit IgG (green).DI was used to stain the cell nuclear (blue).

Please check the [product details page](#) for more images. Overall 4 images are available for ABIN390521.