

Datasheet for ABIN390525
anti-ABCC1 antibody (C-Term)[Go to Product page](#)

2 Images

Overview

Quantity:	400 µL
Target:	ABCC1
Binding Specificity:	AA 1247-1275, C-Term
Reactivity:	Human
Host:	Rabbit
Clonality:	Polyclonal
Conjugate:	This ABCC1 antibody is un-conjugated
Application:	Western Blotting (WB), Flow Cytometry (FACS)

Product Details

Immunogen:	This ABCC1 antibody is generated from rabbits immunized with a KLH conjugated synthetic peptide between 1247-1275 amino acids from the C-terminal region of human ABCC1.
Clone:	RB19677
Isotype:	Ig Fraction
Predicted Reactivity:	B, Pr, M
Purification:	This antibody is prepared by Saturated Ammonium Sulfate (SAS) precipitation followed by dialysis against PBS.

Target Details

Target:	ABCC1
---------	-------

Target Details

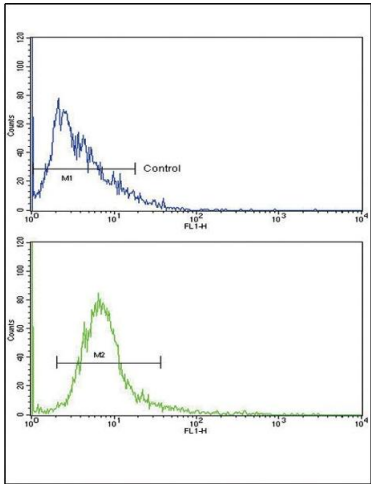
Alternative Name:	ABCC1 (ABCC1 Products)
Background:	ABCC1 is a member of the superfamily of ATP-binding cassette (ABC) transporters. ABC proteins transport various molecules across extra-and intra-cellular membranes. ABC gene are divided into seven distinct subfamilies (ABC1, MDR/TAP, MRP, ALD, OABP, GCN20, White). This full transporter is a member of the MRP subfamily which is involved in multi-drug resistance. This protein functions as a multispecific organic anion transporter, with oxidized glutathione, cysteinyl leukotrienes, and activated aflatoxin B1 as substrates. This protein also transports glucuronides and sulfate conjugates of steroid hormones and bile salts.
Molecular Weight:	171591
Gene ID:	4363
NCBI Accession:	NP_004987
UniProt:	P33527
Pathways:	SARS-CoV-2 Protein Interactome

Application Details

Application Notes:	WB: 1:1000. FC: 1:10~50
Restrictions:	For Research Use only

Handling

Format:	Liquid
Buffer:	Purified polyclonal antibody supplied in PBS with 0.09 % (W/V) sodium azide.
Preservative:	Sodium azide
Precaution of Use:	This product contains Sodium azide: a POISONOUS AND HAZARDOUS SUBSTANCE which should be handled by trained staff only.
Storage:	4 °C, -20 °C
Storage Comment:	Maintain refrigerated at 2-8 °C for up to 6 months. For long term storage store at -20 °C in small aliquots to prevent freeze-thaw cycles.
Expiry Date:	6 months



Flow Cytometry

Image 1. Flow cytometric analysis of NCI- cells using ABCC1 Antibody (C-term)(bottom histogram) compared to a negative control cell (top histogram). FITC-conjugated goat-anti-rabbit secondary antibodies were used for the analysis.



Western Blotting

Image 2. Western blot analysis of ABCC1 antibody (C-term) (ABIN390525 and ABIN2840876) in Ramos cell line lysates (35 µg/lane). ABCC1 (arrow) was detected using the purified Pab.