



[Go to Product page](#)

Datasheet for ABIN390537

## anti-BAALC antibody (N-Term)

### 3 Images

#### Overview

Quantity:	400 µL
Target:	BAALC
Binding Specificity:	AA 41-68, N-Term
Reactivity:	Human
Host:	Rabbit
Clonality:	Polyclonal
Conjugate:	This BAALC antibody is un-conjugated
Application:	Western Blotting (WB), Immunohistochemistry (Paraffin-embedded Sections) (IHC (p)), Flow Cytometry (FACS)

#### Product Details

Immunogen:	This BAALC antibody is generated from rabbits immunized with a KLH conjugated synthetic peptide between 41-68 amino acids from the N-terminal region of human BAALC.
Clone:	RB19726
Isotype:	Ig Fraction
Purification:	This antibody is prepared by Saturated Ammonium Sulfate (SAS) precipitation followed by dialysis against PBS.

#### Target Details

Target:	BAALC
Alternative Name:	BAALC ( <a href="#">BAALC Products</a> )

## Target Details

---

Background:	BAALC may play a synaptic role at the postsynaptic lipid rafts by interacting with CAMK2A.
Molecular Weight:	15551
Gene ID:	79870
NCBI Accession:	<a href="#">NP_001019543</a> , <a href="#">NP_079088</a>
UniProt:	<a href="#">Q8WXS3</a>

## Application Details

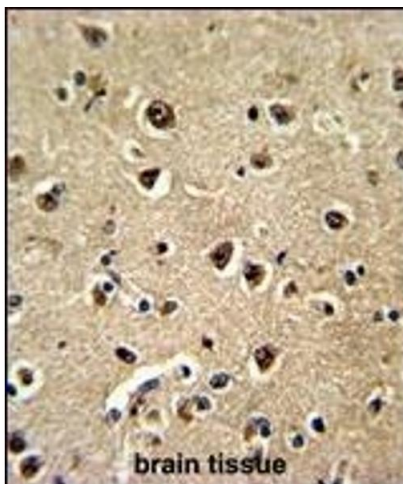
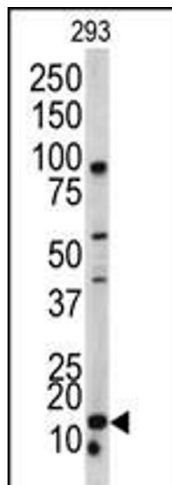
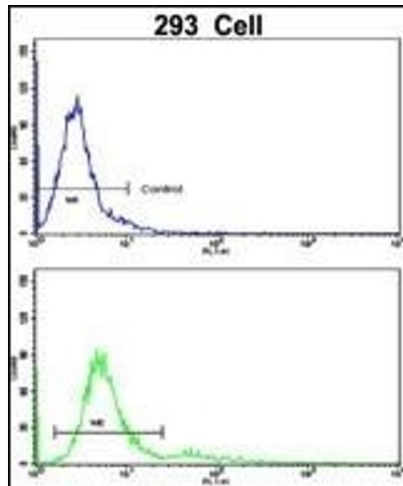
---

Application Notes:	WB: 1:1000. IHC-P: 1:50~100. FC: 1:10~50
Restrictions:	For Research Use only

## Handling

---

Format:	Liquid
Buffer:	Purified polyclonal antibody supplied in PBS with 0.09 % (W/V) sodium azide.
Preservative:	Sodium azide
Precaution of Use:	This product contains Sodium azide: a POISONOUS AND HAZARDOUS SUBSTANCE which should be handled by trained staff only.
Storage:	4 °C,-20 °C
Storage Comment:	Maintain refrigerated at 2-8 °C for up to 6 months. For long term storage store at -20 °C in small aliquots to prevent freeze-thaw cycles.
Expiry Date:	6 months



### Flow Cytometry

**Image 1.** Flow cytometric analysis of 293 cells using BLC Antibody (N-term)(bottom histogram) compared to a negative control cell (top histogram). FITC-conjugated goat-anti-rabbit secondary antibodies were used for the analysis.

### Western Blotting

**Image 2.** Western blot analysis of BLC antibody (N-term) (ABIN390537 and ABIN2840880) in 293 cell line lysates (35 µg/lane). BLC (arrow) was detected using the purified Pab.

### Immunohistochemistry (Paraffin-embedded Sections)

**Image 3.** Formalin-fixed and paraffin-embedded human brain tissue reacted with BLC Antibody (N-term), which was peroxidase-conjugated to the secondary antibody, followed by DAB staining. This data demonstrates the use of this antibody for immunohistochemistry, clinical relevance has not been evaluated.