

Datasheet for ABIN390542

anti-Caldesmon antibody (AA 428-457)**3** Images[Go to Product page](#)

Overview

Quantity:	400 µL
Target:	Caldesmon (CALD1)
Binding Specificity:	AA 428-457
Reactivity:	Human
Host:	Rabbit
Clonality:	Polyclonal
Conjugate:	This Caldesmon antibody is un-conjugated
Application:	Western Blotting (WB), Immunohistochemistry (Paraffin-embedded Sections) (IHC (p)), Flow Cytometry (FACS)

Product Details

Immunogen:	This CALD1 antibody is generated from rabbits immunized with a KLH conjugated synthetic peptide between 428-457 amino acids from the Central region of human CALD1.
Clone:	RB19749
Isotype:	Ig Fraction
Purification:	This antibody is prepared by Saturated Ammonium Sulfate (SAS) precipitation followed by dialysis against PBS.

Target Details

Target:	Caldesmon (CALD1)
Alternative Name:	CALD1 (CALD1 Products)

Target Details

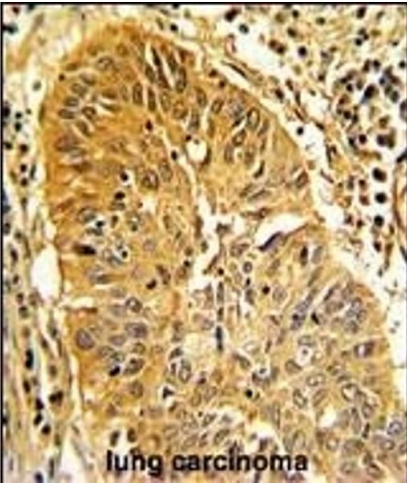
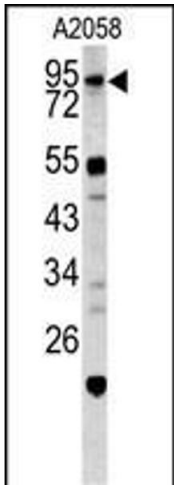
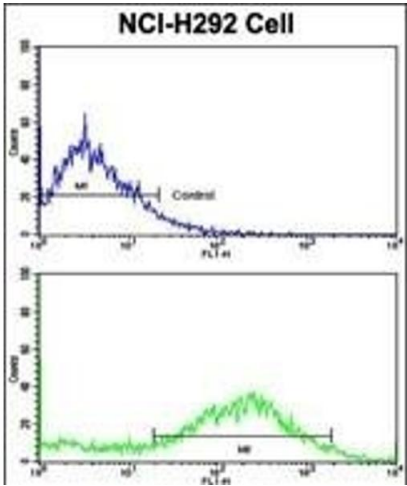
Background:	CALD1 is a calmodulin- and actin-binding protein that plays an essential role in the regulation of smooth muscle and nonmuscle contraction. The conserved domain of this protein possesses the binding activities to Ca(2+)-calmodulin, actin, tropomyosin, myosin, and phospholipids. This protein is a potent inhibitor of the actin-tropomyosin activated myosin MgATPase, and serves as a mediating factor for Ca(2+)-dependent inhibition of smooth muscle contraction.
Molecular Weight:	93231
Gene ID:	800
NCBI Accession:	NP_004333 , NP_149129 , NP_149130 , NP_149131 , NP_149347
UniProt:	Q05682
Pathways:	Myometrial Relaxation and Contraction

Application Details

Application Notes:	WB: 1:1000. IHC-P: 1:10~50. FC: 1:10~50
Restrictions:	For Research Use only

Handling

Format:	Liquid
Buffer:	Purified polyclonal antibody supplied in PBS with 0.09 % (W/V) sodium azide.
Preservative:	Sodium azide
Precaution of Use:	This product contains Sodium azide: a POISONOUS AND HAZARDOUS SUBSTANCE which should be handled by trained staff only.
Storage:	4 °C, -20 °C
Storage Comment:	Maintain refrigerated at 2-8 °C for up to 6 months. For long term storage store at -20 °C in small aliquots to prevent freeze-thaw cycles.
Expiry Date:	6 months



Flow Cytometry

Image 1. Flow cytometric analysis of NCI- cells using CALD1 Antibody (Center)(bottom histogram) compared to a negative control cell (top histogram). FITC-conjugated goat-anti-rabbit secondary antibodies were used for the analysis.

Western Blotting

Image 2. Western blot analysis of CALD1 antibody (Center) (ABIN390542 and ABIN2840882) in cell line lysates (35 μ g/lane). CALD1 (arrow) was detected using the purified Pab.

Immunohistochemistry (Paraffin-embedded Sections)

Image 3. Formalin-fixed and paraffin-embedded human lung carcinoma with CALD1 Antibody (Center), which was peroxidase-conjugated to the secondary antibody, followed by DAB staining. This data demonstrates the use of this antibody for immunohistochemistry, clinical relevance has not been evaluated.