

Datasheet for ABIN390544
anti-CCRN4L antibody (C-Term)[Go to Product page](#)

3 Images

Overview

Quantity:	400 µL
Target:	CCRN4L
Binding Specificity:	AA 309-336, C-Term
Reactivity:	Human
Host:	Rabbit
Clonality:	Polyclonal
Conjugate:	This CCRN4L antibody is un-conjugated
Application:	Western Blotting (WB), Immunohistochemistry (Paraffin-embedded Sections) (IHC (p)), Flow Cytometry (FACS)

Product Details

Immunogen:	This CCRN4L antibody is generated from rabbits immunized with a KLH conjugated synthetic peptide between 309-336 amino acids from the C-terminal region of human CCRN4L.
Clone:	RB19760
Isotype:	Ig Fraction
Predicted Reactivity:	M, Rat
Purification:	This antibody is prepared by Saturated Ammonium Sulfate (SAS) precipitation followed by dialysis against PBS.

Target Details

Target:	CCRN4L
---------	--------

Target Details

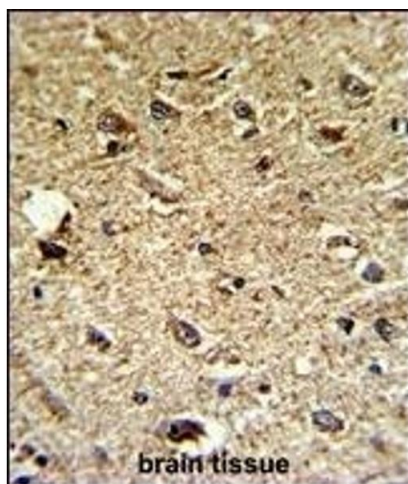
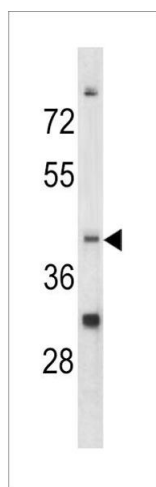
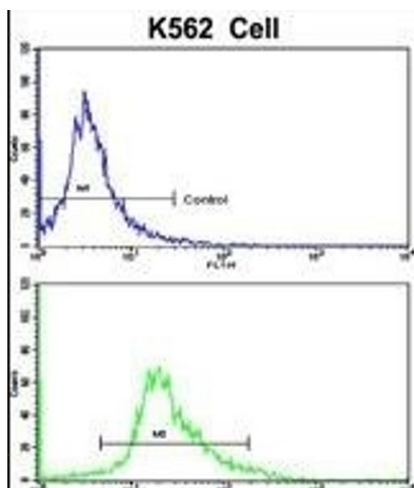
Alternative Name:	CCRN4L (CCRN4L Products)
Background:	CCRN4L is highly similar to Nocturnin, identified as a circadian clock regulated gene in <i>Xenopus laevis</i> . This protein and Nocturnin protein share similarity with the C-terminal domain of a yeast transcription factor, carbon catabolite repression 4 (CCR4).
Molecular Weight:	48196
Gene ID:	25819
NCBI Accession:	NP_036250
UniProt:	Q9UK39
Pathways:	Ribonucleoprotein Complex Subunit Organization

Application Details

Application Notes:	WB: 1:1000. IHC-P: 1:50~100. FC: 1:10~50
Restrictions:	For Research Use only

Handling

Format:	Liquid
Buffer:	Purified polyclonal antibody supplied in PBS with 0.09 % (W/V) sodium azide.
Preservative:	Sodium azide
Precaution of Use:	This product contains Sodium azide: a POISONOUS AND HAZARDOUS SUBSTANCE which should be handled by trained staff only.
Storage:	4 °C, -20 °C
Storage Comment:	Maintain refrigerated at 2-8 °C for up to 6 months. For long term storage store at -20 °C in small aliquots to prevent freeze-thaw cycles.
Expiry Date:	6 months



Flow Cytometry

Image 1. Flow cytometric analysis of K562 cells using CCRN4L Antibody (C-term)(bottom histogram) compared to a negative control cell (top histogram). FITC-conjugated goat-anti-rabbit secondary antibodies were used for the analysis.

Western Blotting

Image 2. Western blot analysis of CCRN4L antibody (C-term) (ABIN390544 and ABIN2840883) in K562 cell line lysates (35 µg/lane). CCRN4L (arrow) was detected using the purified Pab.

Immunohistochemistry (Paraffin-embedded Sections)

Image 3. Formalin-fixed and paraffin-embedded human brain tissue reacted with CCRN4L Antibody (C-term), which was peroxidase-conjugated to the secondary antibody, followed by DAB staining. This data demonstrates the use of this antibody for immunohistochemistry, clinical relevance has not been evaluated.