

Datasheet for ABIN390552
anti-RPS9 antibody (C-Term)

3 Images

[Go to Product page](#)

Overview

Quantity:	400 µL
Target:	RPS9
Binding Specificity:	AA 135-164, C-Term
Reactivity:	Human
Host:	Rabbit
Clonality:	Polyclonal
Conjugate:	This RPS9 antibody is un-conjugated
Application:	Western Blotting (WB), Flow Cytometry (FACS), Immunohistochemistry (Paraffin-embedded Sections) (IHC (p))

Product Details

Immunogen:	This RPS9 antibody is generated from rabbits immunized with a KLH conjugated synthetic peptide between 135-164 amino acids from the C-terminal region of human RPS9.
Clone:	RB19831
Isotype:	Ig Fraction
Predicted Reactivity:	B, M, Rat
Purification:	This antibody is prepared by Saturated Ammonium Sulfate (SAS) precipitation followed by dialysis against PBS.

Target Details

Target:	RPS9
---------	------

Target Details

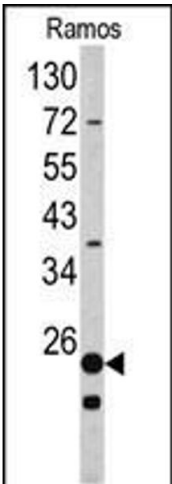
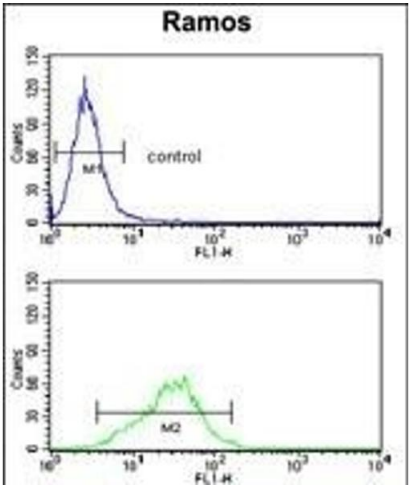
Alternative Name:	RPS9 (RPS9 Products)
Background:	Ribosomes, the organelles that catalyze protein synthesis, consist of a small 40S subunit and a large 60S subunit. Together these subunits are composed of 4 RNA species and approximately 80 structurally distinct proteins. RPS9 is a ribosomal protein that is a component of the 40S subunit. The protein belongs to the S4P family of ribosomal proteins. It is located in the cytoplasm.
Molecular Weight:	22591
Gene ID:	6203
NCBI Accession:	NP_001004
UniProt:	P46781

Application Details

Application Notes:	WB: 1:1000. IHC-P: 1:50~100. FC: 1:10~50
Restrictions:	For Research Use only

Handling

Format:	Liquid
Buffer:	Purified polyclonal antibody supplied in PBS with 0.09 % (W/V) sodium azide.
Preservative:	Sodium azide
Precaution of Use:	This product contains Sodium azide: a POISONOUS AND HAZARDOUS SUBSTANCE which should be handled by trained staff only.
Storage:	4 °C, -20 °C
Storage Comment:	Maintain refrigerated at 2-8 °C for up to 6 months. For long term storage store at -20 °C in small aliquots to prevent freeze-thaw cycles.
Expiry Date:	6 months



Flow Cytometry

Image 1. RPS9 Antibody (C-term) (ABIN390552 and ABIN2840887) flow cytometry analysis of Ramos cells (bottom histogram) compared to a negative control cell (top histogram). FITC-conjugated goat-anti-rabbit secondary antibodies were used for the analysis.

Western Blotting

Image 2. Western blot analysis of RPS9 antibody (C-term) (ABIN390552 and ABIN2840887) in Ramos cell line lysates (35 µg/lane). RPS9 (arrow) was detected using the purified Pab.

Immunohistochemistry (Paraffin-embedded Sections)

Image 3. Formalin-fixed and paraffin-embedded human brain tissue reacted with RPS9 Antibody (C-term), which was peroxidase-conjugated to the secondary antibody, followed by DAB staining. This data demonstrates the use of this antibody for immunohistochemistry, clinical relevance has not been evaluated.