



[Go to Product page](#)

Datasheet for ABIN390553
anti-RRM2 antibody (AA 96-125)

2 Images

Overview

Quantity:	400 µL
Target:	RRM2
Binding Specificity:	AA 96-125
Reactivity:	Human
Host:	Rabbit
Clonality:	Polyclonal
Conjugate:	This RRM2 antibody is un-conjugated
Application:	Western Blotting (WB), Immunohistochemistry (Paraffin-embedded Sections) (IHC (p))

Product Details

Immunogen:	This RRM2 antibody is generated from rabbits immunized with a KLH conjugated synthetic peptide between 96-125 amino acids from the Central region of human RRM2.
Clone:	RB19833
Isotype:	Ig Fraction
Predicted Reactivity:	Pr
Purification:	This antibody is prepared by Saturated Ammonium Sulfate (SAS) precipitation followed by dialysis against PBS.

Target Details

Target:	RRM2
---------	------

Target Details

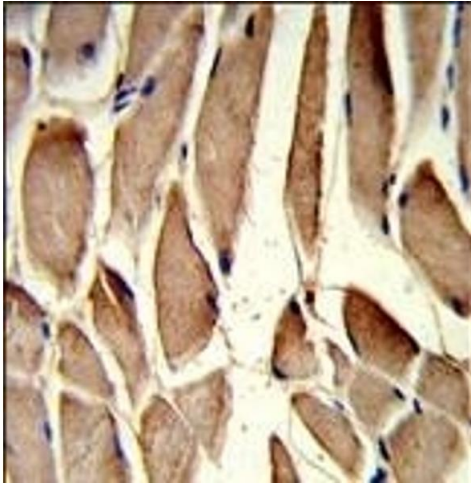
Alternative Name:	RRM2 (RRM2 Products)
Background:	RRM2 is one of two non-identical subunits for ribonucleotide reductase. This reductase catalyzes the formation of deoxyribonucleotides from ribonucleotides. Synthesis of the protein (M2) is regulated in a cell-cycle dependent fashion.
Molecular Weight:	44878
Gene ID:	6241
NCBI Accession:	NP_001025 , NP_001159403
UniProt:	P31350
Pathways:	Mitotic G1-G1/S Phases

Application Details

Application Notes:	WB: 1:1000. IHC-P: 1:50~100
Restrictions:	For Research Use only

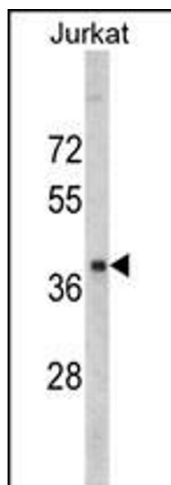
Handling

Format:	Liquid
Buffer:	Purified polyclonal antibody supplied in PBS with 0.09 % (W/V) sodium azide.
Preservative:	Sodium azide
Precaution of Use:	This product contains Sodium azide: a POISONOUS AND HAZARDOUS SUBSTANCE which should be handled by trained staff only.
Storage:	4 °C,-20 °C
Storage Comment:	Maintain refrigerated at 2-8 °C for up to 6 months. For long term storage store at -20 °C in small aliquots to prevent freeze-thaw cycles.
Expiry Date:	6 months



Immunohistochemistry (Paraffin-embedded Sections)

Image 1. Formalin-fixed and paraffin-embedded human skeletal muscle reacted with RRM2 Antibody (Center), which was peroxidase-conjugated to the secondary antibody, followed by DAB staining. This data demonstrates the use of this antibody for immunohistochemistry, clinical relevance has not been evaluated.



Western Blotting

Image 2. Western blot analysis of RRM2 antibody (Center) (ABIN390553 and ABIN2840888) in Jurkat cell line lysates (35 µg/lane). RRM2 (arrow) was detected using the purified Pab.