

Datasheet for ABIN390579
anti-Emilin1 antibody (N-Term)

3 Images

[Go to Product page](#)

Overview

Quantity:	400 µL
Target:	Emilin1 (EMILIN1)
Binding Specificity:	AA 84-112, N-Term
Reactivity:	Human
Host:	Rabbit
Clonality:	Polyclonal
Conjugate:	This Emilin1 antibody is un-conjugated
Application:	Western Blotting (WB), Flow Cytometry (FACS), Immunohistochemistry (Paraffin-embedded Sections) (IHC (p))

Product Details

Immunogen:	This EMILIN1 antibody is generated from rabbits immunized with a KLH conjugated synthetic peptide between 84-112 amino acids from the N-terminal region of human EMILIN1.
Clone:	RB18213
Isotype:	Ig Fraction
Purification:	This antibody is prepared by Saturated Ammonium Sulfate (SAS) precipitation followed by dialysis against PBS.

Target Details

Target:	Emilin1 (EMILIN1)
Alternative Name:	EMILIN1 (EMILIN1 Products)

Target Details

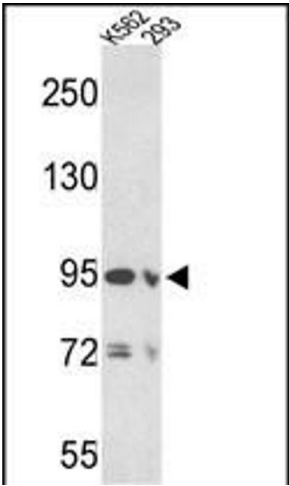
Background:	EMILIN1 may be responsible for anchoring smooth muscle cells to elastic fibers, and may be involved not only in the formation of the elastic fiber, but also in the processes that regulate vessel assembly. It has cell adhesive capacity.
Molecular Weight:	106695
Gene ID:	11117
NCBI Accession:	NP_008977
UniProt:	Q9Y6C2

Application Details

Application Notes:	WB: 1:1000. IHC-P: 1:50~100. FC: 1:10~50
Restrictions:	For Research Use only

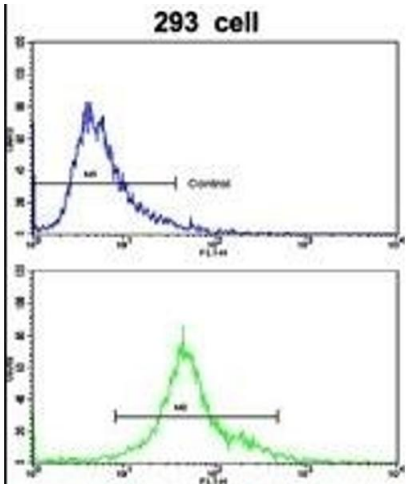
Handling

Format:	Liquid
Buffer:	Purified polyclonal antibody supplied in PBS with 0.09 % (W/V) sodium azide.
Preservative:	Sodium azide
Precaution of Use:	This product contains Sodium azide: a POISONOUS AND HAZARDOUS SUBSTANCE which should be handled by trained staff only.
Storage:	4 °C, -20 °C
Storage Comment:	Maintain refrigerated at 2-8 °C for up to 6 months. For long term storage store at -20 °C in small aliquots to prevent freeze-thaw cycles.
Expiry Date:	6 months



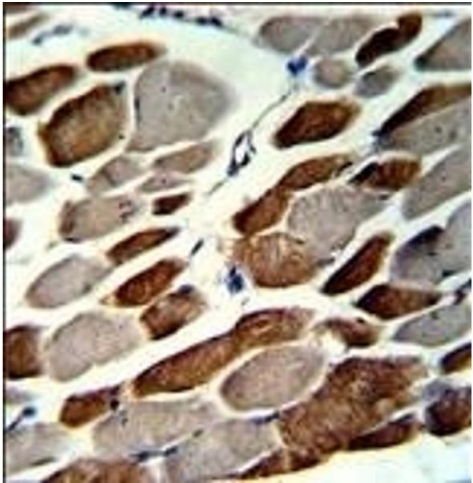
Western Blotting

Image 1. Western blot analysis of EMILIN1 Antibody (N-term) (ABIN390579 and ABIN2840902) in K562 and 293 cell line lysates (35 µg/lane). EMILIN1 (arrow) was detected using the purified Pab.



Flow Cytometry

Image 2. Flow cytometric analysis of 293 cells using EMILIN1 Antibody (N-term)(bottom histogram) compared to a negative control cell (top histogram). FITC-conjugated goat-anti-rabbit secondary antibodies were used for the analysis.



Immunohistochemistry (Paraffin-embedded Sections)

Image 3. Formalin-fixed and paraffin-embedded human skeletal muscle with EMILIN1 Antibody (N-term), which was peroxidase-conjugated to the secondary antibody, followed by DAB staining. This data demonstrates the use of this antibody for immunohistochemistry, clinical relevance has not been evaluated.