

Datasheet for ABIN390580
anti-ETHE1 antibody (C-Term)[Go to Product page](#)

2 Images

Overview

| | |
|----------------------|--|
| Quantity: | 400 µL |
| Target: | ETHE1 |
| Binding Specificity: | AA 180-209, C-Term |
| Reactivity: | Human, Mouse |
| Host: | Rabbit |
| Clonality: | Polyclonal |
| Conjugate: | This ETHE1 antibody is un-conjugated |
| Application: | Western Blotting (WB), Immunohistochemistry (Paraffin-embedded Sections) (IHC (p)) |

Product Details

| | |
|---------------|--|
| Immunogen: | This ETHE1 antibody is generated from rabbits immunized with a KLH conjugated synthetic peptide between 180-209 amino acids from the C-terminal region of human ETHE1. |
| Clone: | RB20158 |
| Isotype: | Ig Fraction |
| Purification: | This antibody is prepared by Saturated Ammonium Sulfate (SAS) precipitation followed by dialysis against PBS. |

Target Details

| | |
|-------------------|--|
| Target: | ETHE1 |
| Alternative Name: | ETHE1 (ETHE1 Products) |

Target Details

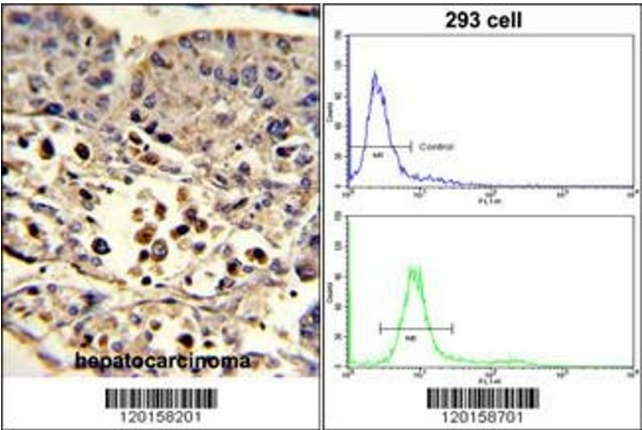
| | |
|-------------------|--|
| Background: | ETHE1 is a sulfur dioxygenase that localizes within the mitochondrial matrix. The enzyme functions in sulfide catabolism. Mutations in its gene result in ethylmalonic encephalopathy. |
| Molecular Weight: | 27873 |
| Gene ID: | 23474 |
| NCBI Accession: | NP_055112 |
| UniProt: | O95571 |

Application Details

| | |
|--------------------|-----------------------------|
| Application Notes: | WB: 1:1000. IHC-P: 1:50~100 |
| Restrictions: | For Research Use only |

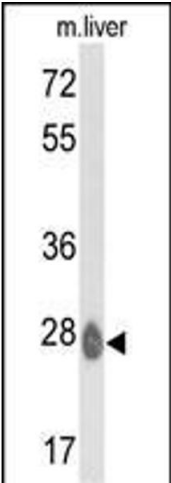
Handling

| | |
|--------------------|--|
| Format: | Liquid |
| Buffer: | Purified polyclonal antibody supplied in PBS with 0.09 % (W/V) sodium azide. |
| Preservative: | Sodium azide |
| Precaution of Use: | This product contains Sodium azide: a POISONOUS AND HAZARDOUS SUBSTANCE which should be handled by trained staff only. |
| Storage: | 4 °C,-20 °C |
| Storage Comment: | Maintain refrigerated at 2-8 °C for up to 6 months. For long term storage store at -20 °C in small aliquots to prevent freeze-thaw cycles. |
| Expiry Date: | 6 months |



Immunohistochemistry (Paraffin-embedded Sections)

Image 1. (LEFT)Formalin-fixed and paraffin-embedded human hepatocarcinoma reacted with ETHE1 Antibody (C-term), which was peroxidase-conjugated to the secondary antibody, followed by DAB staining. This data demonstrates the use of this antibody for immunohistochemistry, clinical relevance has not been evaluated. (RIGHT)Flow cytometric analysis of 293 cells using ETHE1 Antibody (C-term)(bottom histogram) compared to a negative control cell (top histogram). FITC-conjugated goat-anti-rabbit secondary antibodies were used for the analysis.



Western Blotting

Image 2. Western blot analysis of ETHE1 Antibody (C-term) (ABIN390580 and ABIN2840903) in mouse liver tissue lysates (35 µg/lane).ETHE1 (arrow) was detected using the purified Pab.