

Datasheet for ABIN390581
anti-ETHE1 antibody (AA 103-130)[Go to Product page](#)

4 Images

Overview

Quantity:	400 µL
Target:	ETHE1
Binding Specificity:	AA 103-130
Reactivity:	Human, Mouse
Host:	Rabbit
Clonality:	Polyclonal
Conjugate:	This ETHE1 antibody is un-conjugated
Application:	Western Blotting (WB), Immunohistochemistry (Paraffin-embedded Sections) (IHC (p)), Flow Cytometry (FACS)

Product Details

Immunogen:	This ETHE1 antibody is generated from rabbits immunized with a KLH conjugated synthetic peptide between 103-130 amino acids from the Central region of human ETHE1.
Clone:	RB20157
Isotype:	Ig Fraction
Purification:	This antibody is prepared by Saturated Ammonium Sulfate (SAS) precipitation followed by dialysis against PBS.

Target Details

Target:	ETHE1
Alternative Name:	ETHE1 (ETHE1 Products)

Target Details

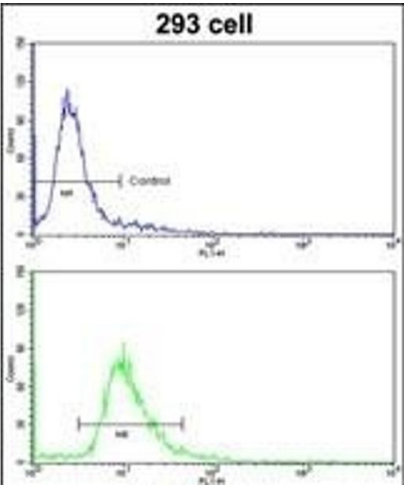
Background:	ETHE1 is a sulfur dioxygenase that localizes within the mitochondrial matrix. The enzyme functions in sulfide catabolism. Mutations in its gene result in ethylmalonic encephalopathy.
Molecular Weight:	27873
Gene ID:	23474
NCBI Accession:	NP_055112
UniProt:	O95571

Application Details

Application Notes:	WB: 1:1000. WB: 1:1000. IHC-P: 1:50~100. FC: 1:10~50
Restrictions:	For Research Use only

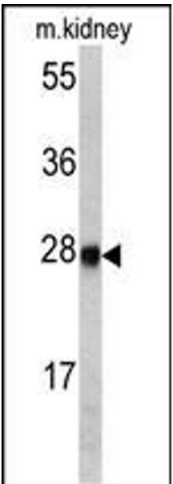
Handling

Format:	Liquid
Buffer:	Purified polyclonal antibody supplied in PBS with 0.09 % (W/V) sodium azide.
Preservative:	Sodium azide
Precaution of Use:	This product contains Sodium azide: a POISONOUS AND HAZARDOUS SUBSTANCE which should be handled by trained staff only.
Storage:	4 °C,-20 °C
Storage Comment:	Maintain refrigerated at 2-8 °C for up to 6 months. For long term storage store at -20 °C in small aliquots to prevent freeze-thaw cycles.
Expiry Date:	6 months



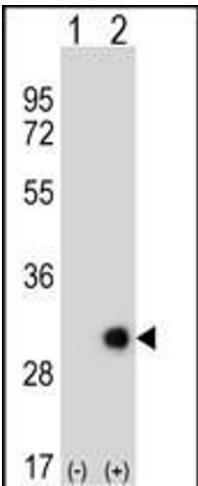
Flow Cytometry

Image 1. Flow cytometric analysis of 293 cells using ETHE1 Antibody (Center)(bottom histogram) compared to a negative control cell (top histogram). FITC-conjugated goat-anti-rabbit secondary antibodies were used for the analysis.



Western Blotting

Image 2. Western blot analysis of ETHE1 antibody (Center) (ABIN390581 and ABIN2840904) in mouse kidney tissue lysates (35 µg/lane). ETHE1 (arrow) was detected using the purified Pab.



Western Blotting

Image 3. Western blot analysis of ETHE1 (arrow) using rabbit polyclonal ETHE1 Antibody (Center) (ABIN390581 and ABIN2840904). 293 cell lysates (2 µg/lane) either nontransfected (Lane 1) or transiently transfected (Lane 2) with the ETHE1 gene.

Please check the [product details page](#) for more images. Overall 4 images are available for ABIN390581.