



[Go to Product page](#)

Datasheet for ABIN390582
anti-ETV4 antibody (C-Term)

4 Images

1 Publication

Overview

Quantity:	400 µL
Target:	ETV4
Binding Specificity:	AA 419-447, C-Term
Reactivity:	Human, Mouse
Host:	Rabbit
Clonality:	Polyclonal
Conjugate:	This ETV4 antibody is un-conjugated
Application:	Western Blotting (WB), Immunohistochemistry (Paraffin-embedded Sections) (IHC (p)), Flow Cytometry (FACS)

Product Details

Immunogen:	This ETV4 antibody is generated from rabbits immunized with a KLH conjugated synthetic peptide between 419-447 amino acids from the C-terminal region of human ETV4.
Clone:	RB20008
Isotype:	Ig Fraction
Purification:	This antibody is prepared by Saturated Ammonium Sulfate (SAS) precipitation followed by dialysis against PBS.

Target Details

Target:	ETV4
Alternative Name:	ETV4 (ETV4 Products)

Target Details

Background:	ETV4 is a transcriptional activator that binds to the enhancer of the adenovirus E1A gene, the core-binding sequence is 5'[AC]GGA[AT]GT-3'.
Molecular Weight:	53938
Gene ID:	2118
NCBI Accession:	NP_001073143 , NP_001248366 , NP_001248367 , NP_001977
UniProt:	P43268

Application Details

Application Notes:	WB: 1:1000. WB: 1:1000. IHC-P: 1:10~50. FC: 1:10~50
Restrictions:	For Research Use only

Handling

Format:	Liquid
Buffer:	Purified polyclonal antibody supplied in PBS with 0.09 % (W/V) sodium azide.
Preservative:	Sodium azide
Precaution of Use:	This product contains Sodium azide: a POISONOUS AND HAZARDOUS SUBSTANCE which should be handled by trained staff only.
Storage:	4 °C,-20 °C
Storage Comment:	Maintain refrigerated at 2-8 °C for up to 6 months. For long term storage store at -20 °C in small aliquots to prevent freeze-thaw cycles.
Expiry Date:	6 months

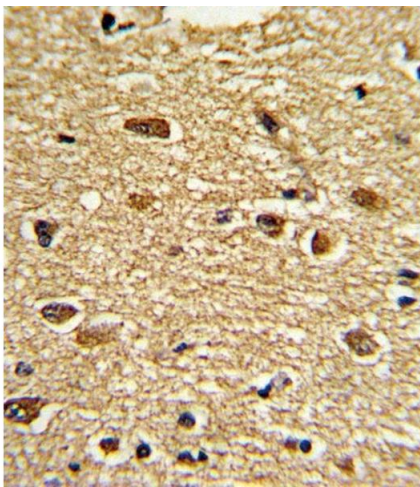
Publications

Product cited in:	<p>Murakami, Ito, Hagiwara, Yoshida, Sobue, Ichihara, Takagi, Kojima, Tanaka, Tamiya-Koizumi, Kyogashima, Suzuki, Banno, Nozawa, Murate: "ATRA inhibits ceramide kinase transcription in a human neuroblastoma cell line, SH-SY5Y cells: the role of COUP-TFI." in: Journal of neurochemistry, Vol. 112, Issue 2, pp. 511-20, (2010) (PubMed).</p> <p>Yang, Gagarin, St Laurent, Hammell, Toma, Hu, Iwasa, McCaffrey: "Cardiovascular inflammation and lesion cell apoptosis: a novel connection via the interferon-inducible immunoproteasome." in: Arteriosclerosis, thrombosis, and vascular biology, Vol. 29, Issue 8, pp. 1213-9, (2009) (</p>
-------------------	---

[PubMed](#)).

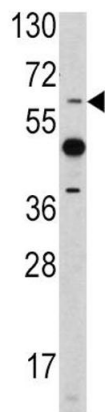
Hinkovska-Galcheva, Clark, VanWay, Huang, Hiraoka, Abe, Borofsky, Kunkel, Shanley, Shayman, Lanni, Petty, Boxer: "Ceramide kinase promotes Ca²⁺ signaling near IgG-opsonized targets and enhances phagolysosomal fusion in COS-1 cells." in: **Journal of lipid research**, Vol. 49, Issue 3, pp. 531-42, (2008) ([PubMed](#)).

Images



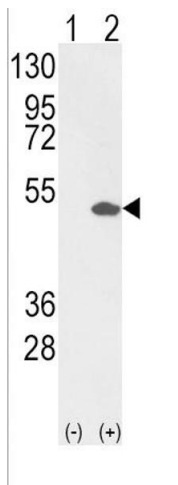
Immunohistochemistry (Paraffin-embedded Sections)

Image 1. Formalin-fixed and paraffin-embedded human brain tissue reacted with ETV4 Antibody (C-term), which was peroxidase-conjugated to the secondary antibody, followed by DAB staining. This data demonstrates the use of this antibody for immunohistochemistry, clinical relevance has not been evaluated.



Western Blotting

Image 2. Western blot analysis of ETV4 antibody (C-term) (ABIN390582 and ABIN2840905) in mouse heart tissue lysates (35 µg/lane). ETV4 (arrow) was detected using the purified Pab.



Western Blotting

Image 3. Western blot analysis of ETV4 (arrow) using rabbit polyclonal ETV4 Antibody (C-term) (R). 293 cell lysates (2 μ g/lane) either nontransfected (Lane 1) or transiently transfected with the ETV4 gene (Lane 2).

Please check the [product details page](#) for more images. Overall 4 images are available for ABIN390582.