

Datasheet for ABIN390594

anti-HMGCS1 antibody (C-Term)**3** Images[Go to Product page](#)

Overview

Quantity:	400 µL
Target:	HMGCS1
Binding Specificity:	AA 442-470, C-Term
Reactivity:	Human
Host:	Rabbit
Clonality:	Polyclonal
Conjugate:	This HMGCS1 antibody is un-conjugated
Application:	Western Blotting (WB), Immunohistochemistry (Paraffin-embedded Sections) (IHC (p)), Flow Cytometry (FACS)

Product Details

Immunogen:	This HMGCS1 antibody is generated from rabbits immunized with a KLH conjugated synthetic peptide between 442-470 amino acids from the C-terminal region of human HMGCS1.
Clone:	RB20147
Isotype:	Ig Fraction
Predicted Reactivity:	C, Ha, M, Rat
Purification:	This antibody is prepared by Saturated Ammonium Sulfate (SAS) precipitation followed by dialysis against PBS.

Target Details

Target:	HMGCS1
---------	--------

Target Details

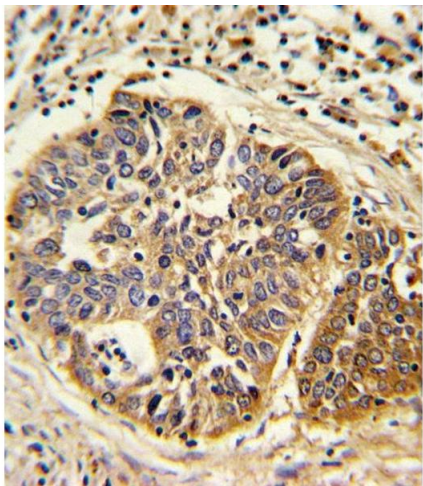
Alternative Name:	HMGCS1 (HMGCS1 Products)
Background:	HMGCS1 condenses acetyl-CoA with acetoacetyl-CoA to form HMG-CoA, which is the substrate for HMG-CoA reductase.
Molecular Weight:	57294
Gene ID:	3157
NCBI Accession:	NP_001091742 , NP_002121
UniProt:	Q01581
Pathways:	Regulation of Lipid Metabolism by PPARalpha

Application Details

Application Notes:	WB: 1:1000. IHC-P: 1:10~50. FC: 1:10~50
Restrictions:	For Research Use only

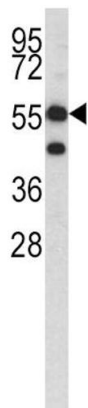
Handling

Format:	Liquid
Buffer:	Purified polyclonal antibody supplied in PBS with 0.09 % (W/V) sodium azide.
Preservative:	Sodium azide
Precaution of Use:	This product contains Sodium azide: a POISONOUS AND HAZARDOUS SUBSTANCE which should be handled by trained staff only.
Storage:	4 °C,-20 °C
Storage Comment:	Maintain refrigerated at 2-8 °C for up to 6 months. For long term storage store at -20 °C in small aliquots to prevent freeze-thaw cycles.
Expiry Date:	6 months



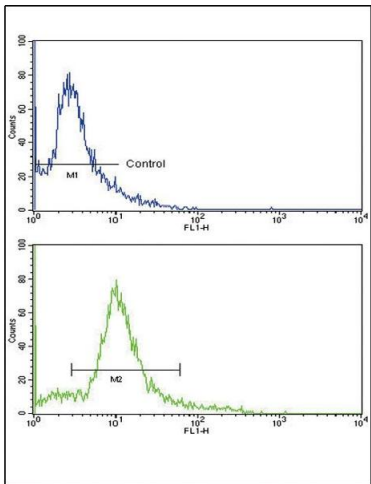
Immunohistochemistry (Paraffin-embedded Sections)

Image 1. Formalin-fixed and paraffin-embedded human lung carcinoma reacted with HMGCS1 Antibody (C-term), which was peroxidase-conjugated to the secondary antibody, followed by DAB staining. This data demonstrates the use of this antibody for immunohistochemistry, clinical relevance has not been evaluated.



Western Blotting

Image 2. Western blot analysis of HMGCS1 antibody (C-term) (ABIN390594 and ABIN2840912) in K562 cell line lysates (35 µg/lane). NKRF (arrow) was detected using the purified Pab.



Flow Cytometry

Image 3. Flow cytometric analysis of hela cells using HMGCS1 Antibody (C-term)(bottom histogram) compared to a negative control cell (top histogram). FITC-conjugated goat-anti-rabbit secondary antibodies were used for the analysis.