

Datasheet for ABIN390596

anti-Hemopexin antibody (AA 200-227)**5** Images[Go to Product page](#)

Overview

Quantity:	400 µL
Target:	Hemopexin (HPX)
Binding Specificity:	AA 200-227
Reactivity:	Human, Rat, Mouse
Host:	Rabbit
Clonality:	Polyclonal
Conjugate:	This Hemopexin antibody is un-conjugated
Application:	Western Blotting (WB), Flow Cytometry (FACS), Immunohistochemistry (Paraffin-embedded Sections) (IHC (p))

Product Details

Immunogen:	This HPX antibody is generated from rabbits immunized with a KLH conjugated synthetic peptide between 200-227 amino acids from the Central region of human HPX.
Clone:	RB18728
Isotype:	Ig Fraction
Purification:	This antibody is purified through a protein A column, followed by peptide affinity purification.

Target Details

Target:	Hemopexin (HPX)
Alternative Name:	HPX (HPX Products)

Target Details

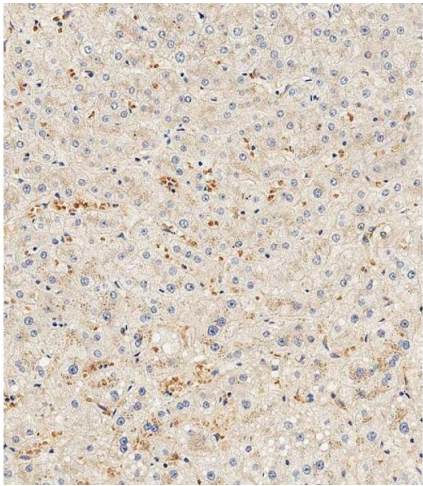
Background:	HPX is a plasma glycoprotein that binds heme with high affinity. The protein is an acute phase protein that transports heme from the plasma to the liver and may be involved in protecting cells from oxidative stress.
Molecular Weight:	51676
Gene ID:	3263
NCBI Accession:	NP_000604
UniProt:	P02790
Pathways:	Transition Metal Ion Homeostasis , Regulation of Leukocyte Mediated Immunity , Positive Regulation of Immune Effector Process , Production of Molecular Mediator of Immune Response

Application Details

Application Notes:	WB: 1:2000. WB: 1:2000. IHC-P-Leica: 1:500. IHC-P-Leica: 1:500. FC: 1:10~50
Restrictions:	For Research Use only

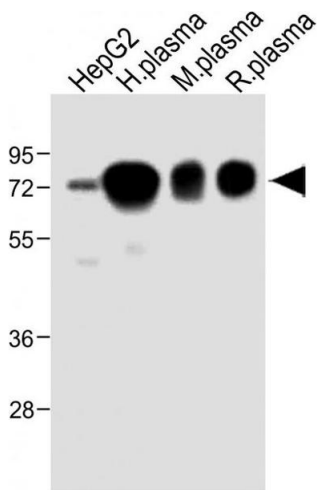
Handling

Format:	Liquid
Buffer:	Purified polyclonal antibody supplied in PBS with 0.09 % (W/V) sodium azide.
Preservative:	Sodium azide
Precaution of Use:	This product contains Sodium azide: a POISONOUS AND HAZARDOUS SUBSTANCE which should be handled by trained staff only.
Handling Advice:	Avoid freeze-thaw cycles.
Storage:	4 °C,-20 °C
Storage Comment:	Maintain refrigerated at 2-8 °C for up to 6 months. For long term storage store at -20 °C in small aliquots.
Expiry Date:	6 months



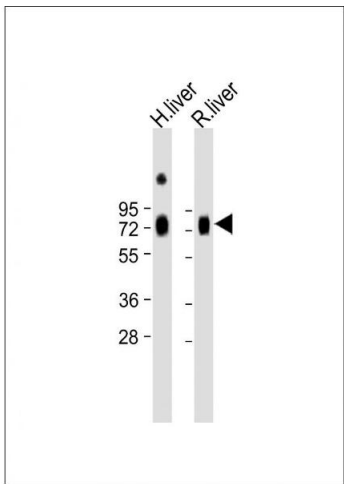
Immunohistochemistry (Paraffin-embedded Sections)

Image 1. Immunohistochemical analysis of paraffin-embedded Human liver tissue using (ABIN390596 and ABIN2840914) performed on the Leica® BOND RXm. Tissue was fixed with formaldehyde at room temperature, antigen retrieval was by heat mediation with a EDTA buffer (pH 9.0). Samples were incubated with primary Antibody (1:500) for 1 hours at room temperature. A undiluted biotinylated CRF Anti-Polyvalent HRP Polymer antibody was used as the secondary antibody.



Western Blotting

Image 2. All lanes : Anti-HPX Antibody (Center) at 1:2000 dilution Lane 1: HepG2 whole cell lysate Lane 2: Human plasma lysate Lane 3: Mouse plasma lysate Lane 4: Rat plasma lysate Lysates/proteins at 20 µg per lane. Secondary Goat Anti-Rabbit IgG, (H+L), Peroxidase conjugated at 1/10000 dilution. Predicted band size : 52 kDa Blocking/Dilution buffer: 5 % NFDM/TBST.



Western Blotting

Image 3. All lanes : Anti-HPX Antibody (Center) at 1:2000 dilution Lane 1: Human liver lysate Lane 2: Rat liver lysate Lysates/proteins at 20 µg per lane. Secondary Goat Anti-Rabbit IgG, (H+L), Peroxidase conjugated at 1/10000 dilution. Predicted band size : 52 kDa Blocking/Dilution buffer: 5 % NFDM/TBST.

Please check the [product details page](#) for more images. Overall 5 images are available for ABIN390596.