



[Go to Product page](#)

Datasheet for ABIN390606  
**anti-NKRF antibody (AA 205-233)**

2 Images

Overview

Quantity:	400 µL
Target:	NKRF
Binding Specificity:	AA 205-233
Reactivity:	Human
Host:	Rabbit
Clonality:	Polyclonal
Conjugate:	This NKRF antibody is un-conjugated
Application:	Western Blotting (WB), Immunohistochemistry (Paraffin-embedded Sections) (IHC (p))

Product Details

Immunogen:	This NKRF antibody is generated from rabbits immunized with a KLH conjugated synthetic peptide between 205-233 amino acids from the Central region of human NKRF.
Clone:	RB18512
Isotype:	Ig Fraction
Predicted Reactivity:	M
Purification:	This antibody is prepared by Saturated Ammonium Sulfate (SAS) precipitation followed by dialysis against PBS.

Target Details

Target:	NKRF
---------	------

## Target Details

---

Alternative Name:	<a href="#">NKRF (NKRF Products)</a>
Background:	NKRF is a transcription factor that interacts with specific negative regulatory elements (NREs) to mediate transcriptional repression of certain NK-kappa-B-responsive genes. The protein localizes predominantly to the nucleolus with a small fraction found in the nucleoplasm and cytoplasm.
Molecular Weight:	77673
Gene ID:	55922
NCBI Accession:	<a href="#">NP_001166958</a> , <a href="#">NP_001166959</a> , <a href="#">NP_060014</a>
UniProt:	<a href="#">O15226</a>

## Application Details

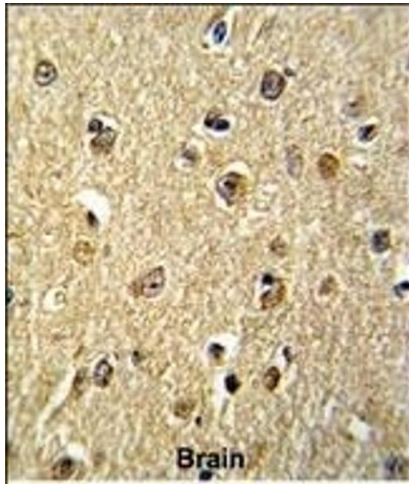
---

Application Notes:	WB: 1:1000. IHC-P: 1:50~100
Restrictions:	For Research Use only

## Handling

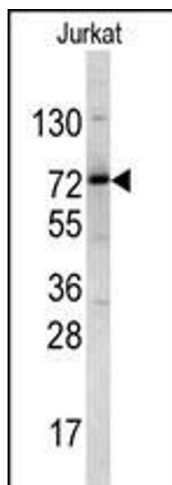
---

Format:	Liquid
Buffer:	Purified polyclonal antibody supplied in PBS with 0.09 % (W/V) sodium azide.
Preservative:	Sodium azide
Precaution of Use:	This product contains Sodium azide: a POISONOUS AND HAZARDOUS SUBSTANCE which should be handled by trained staff only.
Storage:	4 °C,-20 °C
Storage Comment:	Maintain refrigerated at 2-8 °C for up to 6 months. For long term storage store at -20 °C in small aliquots to prevent freeze-thaw cycles.
Expiry Date:	6 months



### Immunohistochemistry (Paraffin-embedded Sections)

**Image 1.** Formalin-fixed and paraffin-embedded human brain reacted with NKRF Antibody (Center), which was peroxidase-conjugated to the secondary antibody, followed by DAB staining. This data demonstrates the use of this antibody for immunohistochemistry, clinical relevance has not been evaluated.



### Western Blotting

**Image 2.** Western blot analysis of NKRF antibody (Center) (ABIN390606 and ABIN2840918) in Jurkat cell line lysates (35 µg/lane). NKRF (arrow) was detected using the purified Pab.